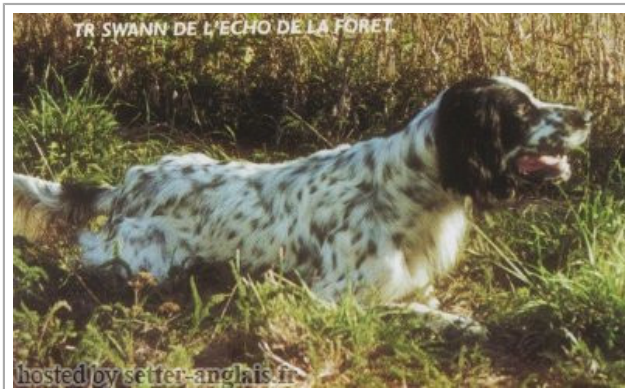







**SWANN DE L'ECHO DE LA FORET**

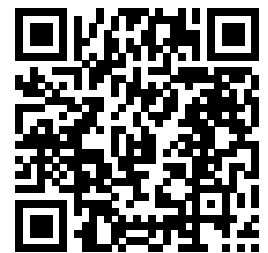
2001-05-13 (M) LOF 160972/26406

Couleur : Noi.PBl.Env (bluebelton) / Titres : TR / Dyspl. : A  
[fiche affixe](#)

<p>Père</p> <p><b>RADENTIS D'ESPANA</b> 1995-05-22 (M) LOE 990823 (Ch IT B, Ch GQ) - lemon</p> 	<p><b>RADENTIS SBRANCO</b> 1991-07-01 (M) LOI ST448908 (CH IB, Ch. Int. Lav.) - lemon</p> 	<p><b>RADENTIS BORG</b> 1987-04-30 (M) LOI ST350267 (Ch. Int. Lav., CH GQ, Ch. Ital. Lav., Camp. Ripr.) - lemon</p> 	<p><b>RADENTIS GIAN</b> 1983-01-02 (M) LOI ST258470 (Ch. Ital. Lav., Ch. Int. Lav., Camp. Ripr.) - lemon</p> 	
		<p><b>RADENTIS OLA</b> 1984-09-30 (F) LOI ST298174 - lemon</p>	<p><b>RADENTIS BORG</b> 1987-04-30 (M) LOI ST350267 (Ch. Int. Lav., CH GQ, Ch. Ital. Lav., Camp. Ripr.) - lemon</p> 	<p><b>RADENTIS DIDO</b> 1981-04-01 (M) LOI ST228056 - bluebelton</p> 
		<p><b>RADENTIS ALA</b> 1994-03-15 (F) LOI ST496649 (Ch T) - lemon</p>	<p><b>RADENTIS RAISSA</b> 1991-05-30 (F) LOI ST448920 - lemon</p>	<p><b>ROVAL EDI</b> 1981-10-11 (F) LOI ST239196 - bluebelton</p>
				<p><b>RADENTIS GIAN</b> 1980-01-02 (M) LOI ST258470 (Ch. Ital. Lav., Ch. Int. Lav., Camp. Ripr.) - lemon</p> 
			<p><b>DOLLY DELLA VECCHIA IRLANDA</b> 1980-02-16 (F) LOI ST213976 - bluebelton</p>	
			<p><b>DOLLY DELLA VECCHIA IRLANDA</b> 1980-02-16 (F) LOI ST213976 - bluebelton</p>	
			<p><b>RADENTIS OMAR</b> 1990-01-06 (M) LOI ST414189 - bluebelton</p>	
			<p><b>FAUNA DELLA VECCHIA IRLANDA</b> 1985-01-02 (F) LOI ST302135 - lemon</p>	

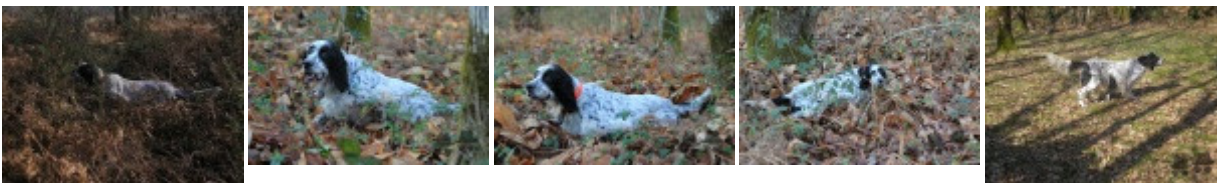
<p>Mère <u>NIRTIE DE L'ECHO DE LA FORET</u> 1997-06-23 (F) LOF 138882/25781 (CHP CHA TR) - tricolore</p> 	<p><u>HYPER DE L'ECHO DE LA FORET</u> 1992-01-01 (M) LOF 111469/16750 (CH T, CH A, TR GQ) - lemon</p> 	<p><u>COW BOY DES RIVES DE L'ESTRIGON</u> 1987-05-30 (M) LOF 91056/12289 (CHQC CH.T. CHP CHA TR) - lemon</p> 	<p><u>BASSINO</u> 1985-01-06 (M) LOF 85287/10130 (CHQFC TR) - bluebelton</p>
		<p><u>DORISS DE L'ECHO DE LA FORET</u> 1988-08-25 (F) LOF 96924/15609 (CH P, Tr GQ) - tricolore</p> 	<p><u>TALC DES PETITES CHAUMES</u> 1982-07-18 (M) LOF 73956/8489 (CHQFC CHCPS TR CHP) - bluebelton</p>
<p><u>IDOLE</u> 1993-12-02 (F) LOF 120952/21094 - bluebelton</p>		<p><u>CALIN DU MAS D'EYRAUD</u> 1987-11-15 (M) LOF 93567/12617 (CH A, CH P, CH T, CH IT) - bluebelton</p> 	<p><u>ALMER</u> 1984-04-03 (M) LOF 81739/9431 (CHQFS CHQFC CHCPC TR) - bluebelton</p>
		<p><u>DYANE</u> 1988-08-26 (F) LOF 96552/15767 - tricolore</p>	<p><u>ANITA DU GUÉ DE BLANQUETAQUE</u> 1985-08-22 (F) LOF 84847/12857 - bluebelton</p>
		<p><u>ASLETTE DE RIADE</u> 1985-04-14 (F) LOF 81947/14148 - bluebelton</p>	<p><u>RADJAH DE ROC'MIGNON</u> 1980-09-28 (M) LOF 67355/8089 (Ch CS QFS CPS) - tricolore</p>

Eleveur : PROVOST DANIEL / Propriétaire : MARCHEGAY Frederic  
Elite ACot.6  
HD-A  
Cotation : 6  
Tatouage : 2AJR120  
Sang italien (estimation) : 71 %  
Estimation des points au pédigrée : 54



## Résultats expositions

Lieu	Date	Classe	Juge	Qualif.	Pts
FR <u>Lamalou Les Bains Exposition Nat</u>	2002-06-30	CJM	Dominique Regnier B Rene Lenne	2	
Total des points				2	



Note : les données ne sont pas garanties. Elles ont été entrées par les membres sans garantie d'exactitude.