










**GARBUNO-KO PIRRITX**

2020-03-05 (M) LOE 2514261  
Couleur : Blanco y naranja (lemon)  
[fiche affixe](#)



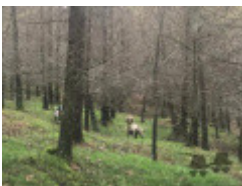
<p>Père <b>OREKA ABERRI</b> (M) LOE 2469817</p>	<p><b>NATAN</b> 2012-10-03 (M) LOI LO12157969 (CH IT GQ, Camp. TR. (CH GQ), CH(I)T) - bluebelton</p>	<p><b>KAPO</b> 2003-11-10 (M) LOI LO0439835 (Ch IT GQ) - bluebelton</p>	<p><b>NERO</b> 1997-03-29 (M) LOI LO9817889 (Ch T, Ch GQ) - bluebelton</p>
	<p><b>OREKA GARDA</b> (F) LOE 1922067</p>	<p><b>QUATTA</b> 2009-06-11 (F) LOI LO1085288 - tricolore</p>	<p><b>KYBA</b> 1998-01-01 (F) LOI LO98118951 - lemon</p>
		<p><b>NERO ALESS SETTER</b> 2001-04-16 (M) LOE 1371969 - bluebelton</p>	<p><b>AMY</b> 2002-08-10 (F) LOI LO02143515 - tricolore</p>
		<p><b>AIZE</b> (F) LOE 1207500</p>	<p><b>ARNO</b> 1988-04-17 (M) LOI ST374735 (Ch. Int. Lav., Camp. Ripr., Ch. Ital. Lav.) - lemon</p>
			<p><b>ODE DEL SOLE</b> 1993-09-10 (F) LOI ST490145 - liver</p>
			<p>inconnu</p>
			<p>inconnu</p>

<p>Mère <u>GARBUNO-KO ORGI</u> 2018-07-01 (F) LOE 2438552 - lemon</p> 	<p><u>ITZURUN JUDAS</u> 2013-05-12 (M) LOE 2160425 - lemon</p> 	<p><u>GIBELTARIK PERRY</u> 2006-03-01 (M) LOE 1670916 - lemon</p> 	<p><u>GIBELTARIK FLOYD</u> (M) GK2331</p>
	<p><u>MIRU DE ESKISAORI</u> 2017-05-13 (F) LOE 2388358 - tricolore</p>	<p><u>ITZURUN CELINE</u> 2007-09-25 (F) LOE 1748417</p> 	<p><u>FERRQI DE LA ARMUÑA</u> (M) LOE 1281492 (TrCP(E.04), TrPR(E.04))</p> 
	<p><u>NOLO DEL ZAGNIS</u> 2012-07-05 (M) LOI LO12129055 (CH GQ, CH IT, Camp. Ital. Lav. (CH T), Camp. Ripr., CH(I)B) - bluebelton</p> 	<p><u>GIAR D'ALERIA</u> 2008-11-15 (M) LOI LO09120198 (Camp. Soc., Ch. Ita. Lav.) - lemon</p> 	
	<p><u>DAKAR DE AGIÑA</u> 2008-04-12 (F) LOE 1834817 - bluebelton</p> 	<p><u>ALCE DEL ZAGNIS</u> 2009-10-27 (F) LOI LO1054031 - lemon</p>	<p><u>GIBELTARIK PERRY</u> 2006-03-01 (M) LOE 1670916 - lemon</p> 
		<p><u>VENA DE BIDASOA</u> 2004-09-18 (F) LOE 1485384 - Blanco y Eegro</p>	

Eleveur : GARBUNO-KO / Propriétaire : JOSE MARIA ARBELAITZ  
 Puce : 97810108229133  
 Sang italien (estimation) : 83 %  
 Estimation des points au pédigrée : 12

## Taux de consanguinité (estimation) : 1.3 %

ARNO (4 X 6,6,7,7,8) : 0.006348  
ODE DEL SOLE (4 X 6,7,7,8) : 0.004532  
RADENTIS GIAN (6 X 7,8,8,8,8,8,8) : 0.000977  
PALAZIENSIS PEPE (6,6 X 7) : 0.000488  
DECOR LOT (7,7 X 8,8,8,8) : 0.000427  
FRANCINI'S LUCA (6 X 8) : 0.000122  
NEGUS (6 X 8) : 0.000122  
CAM DEL BINARIO (8 X 8) : 0.000031  
ORFEO DELLA TRAPPOLA (8 X 8) : 0.000031



Note : les données ne sont pas garanties. Elles ont été entrées par les membres sans garantie d'exactitude.

