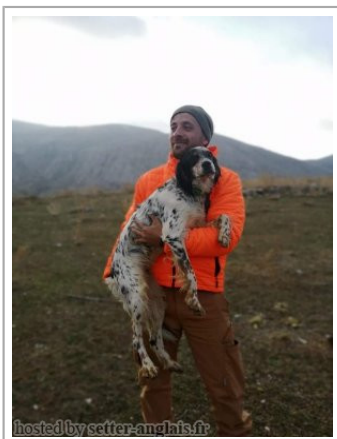










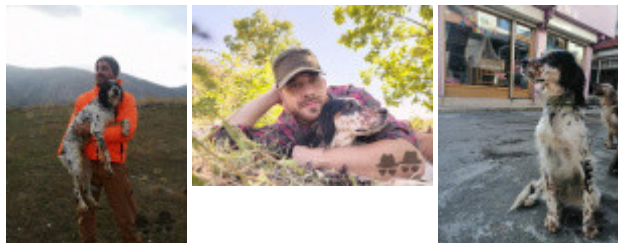
**GUERA VOM KASTAMONU**

2019-05-25 (F) KIF-ES-3091  
Couleur : Noi.Mar.Fau.PBl.Env (tricolore) / Dyspl. : A  
[fiche affixe](#)



Père <b>ETOÒ TOMEKCE SETTER</b> 2015-05-25 (M) 15/115576 - Liver 	<b>ZAC</b> 2009-03-25 (M) LOI LO0984215 - lemon	<b>ALY</b> 2005-03-26 (M) LOI LO05123787 - lemon	 <b>RADENTIS VOLO</b> 2002-07-05 (M) LOI LO02158711 - lemon	
	<b>KELLY</b> 2012-09-02 (F) ROI12/145412 - lemon	<b>KELLY</b> 2002-01-25 (F) LOI LO0261424 - lemon	<b>BETH</b> 1996-06-10 (M) LOI ST544922 - lemon	<b>BIBA</b> 2002-08-04 (F) LOI LO02138811 - lemon
Mère <b>JAVA SULEYMAN USTA</b> 2015-03-31 (F) KIF-ES-159 - lemon 	<b>RADENTIS ALI'</b> (M) KIF-ES-0148 	<b>RADENTIS NOMAR</b> 1998-03-22 (M) LOI LO98133353 ((CHGQ CHITF / CHIT.B)) - liver 	 <b>RADENTIS SBRANCO</b> 1991-07-01 (M) LOI ST448908 (CH IB, Ch. Int. Lav.) - lemon	
	<b>CANO SULEYMAN USTA</b> 2015-11-20 (F) KIF-ES-0545 - lemon	<b>RADENTIS SABA</b> 2004-09-23 (F) LOI LO0538510 - bluebelton	<b>BETH</b> 1996-06-10 (M) LOI ST544922 - lemon	 <b>KELLI DELLA MARIKA</b> 1995-08-06 (F) LOI ST530204 (Ch. Ital. Lav.) - bluebelton
		<b>RADENTIS QUES</b> 2013-05-10 (M) KIF-ES-0147 - liver	<b>CATY DEL FABIOMASSIMO</b> 1998-03-18 (F) LOI LO98107783 - lemon	 <b>RADENTIS SBRANCO</b> 1991-07-01 (M) LOI ST448908 (CH IB, Ch. Int. Lav.) - lemon
		<b>MORA</b> 2013-05-10 (F) KIF-0475 - lemon	<b>ZAR DEL FABIOMASSIMO</b> 1993-08-17 (M) LOI ST484695 (Ch. Ital. Lav.) - lemon	<b>DORA 2 DEL FABIOMASSIMO</b> 1995-05-10 (F) LOI ST517765 - lemon
			<b>SILA DEGLI ALTI PASCOLI</b> 1987-05-02 (F) LOI ST357029 - lemon	
			<b>NELSO DEL TIONES</b> 1989-03-25 (M) LOI ST396714 - bluebelton	
			<b>SILA DEGLI ALTI PASCOLI</b> 1987-05-02 (F) LOI ST357029 - lemon	
			<b>ZAR DEL FABIOMASSIMO</b> 1993-08-17 (M) LOI ST484695 (Ch. Ital. Lav.) - lemon	
			<b>DORA 2 DEL FABIOMASSIMO</b> 1995-05-10 (F) LOI ST517765 - lemon	
			<b>RADENTIS SBRANCO</b> 1991-07-01 (M) LOI ST448908 (CH IB, Ch. Int. Lav.) - lemon	
			<b>CAPRICE DEGLI ALTI PASCOLI</b> 1987-02-16 (F) LOI ST345102 (CH(I)B, Camp. Ripr.) - bluebelton	
			inconnu	
			inconnu	
			inconnu	
			inconnu	

Eleveur : Vom Kastamonu / Propriétaire : Deniz ATE? (05324304691)  
Sang italien (estimation) : 75 %  
Estimation des points au pédigrée : 3



Note : les données ne sont pas garanties. Elles ont été entrées par les membres sans garantie d'exactitude.