

BOSPHORUS DAN BOLDOR

2019-09-11 (M) KIF-ES-3773
Couleur : Fau.PBl.Env. (lemon)
[fiche affixe](#)

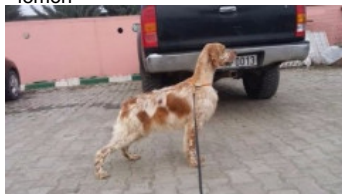


hosted by setter-anglais.fr

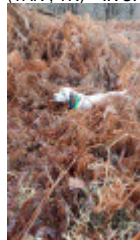
NOLO DEL ZAGNIS 2012-07-05 (M)
LOI LO12129055 (CH GQ, CH IT, Camp.
Ital. Lav. (CH T), Camp. Ripr., CH(I)B) -
bluebelton



Père
**DES ARCANES DE SCOLOPAX
MORELLO**
2016-06-28 (M)
LOF 245863
- lemon



DES ARCANES DE SCOLOPAX FIZZ
2010-06-12 (F) LOF 210570/43919
(TAN, TR) - liver



GIAR D'ALERIA 2008-11-15 (M) LOI
LO09120198 (Camp. Soc., Ch. Ita. Lav.) -
lemon



ALICE DEL ZAGNIS 2009-10-27 (F)
LOI LO1054031 - lemon



GLENDA DI GRUMA 2004-06-15 (F)
LOF 197385/37203 - liver



BAYSIDES LITTLE RIVER
2006-08-14 (M) AKCSR36664507 -
Orange Belton



FAIRRAY BLUE MOON 2002-12-01
(F) LOI LO0521110 - BLU BELTON

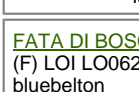


FAIRRAY JACK 2004-09-28 (M) LOI
LO0650723 (CH) - lemon



LAURA OD BRESTOVACKA ELI (F)

LORD DEL ZAGNIS
2002-09-30 (M) LOI
LO02167262 (Ch. Ital. Lav.,
CH GQ, Ch. Int. Lav.) -
lemon



FATA DI BOSCOBANCO 2005-08-04
(F) LOI LO0628070 (Ch. Ital. Lav.) -
bluebelton

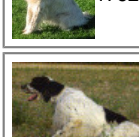
ZAC DEL ZAGNIS 2004-02-08 (M)
LOI LO04103934 - bluebelton

MIMI' DEL ZAGNIS 2004-02-08 (F)
LOI LO04103900 - tricolore



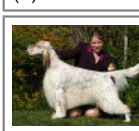
RADENTIS NOBEL
2003-01-08 (M) LOF
181281/28903 (CHP CHA
CH.T.) - bluebelton

VISTA DU MAS D'EYRAUD
2004-05-31 (F) LOF
176273/33679 - liver



ANTO 2002-01-07
(M) LOI
LO0246001 (Ch
Italie T, CH IT) -
bluebelton

ROCHEPIN DI GRUMA 2001-06-05
(F) LOI LO01160088 - lemon



**BAYSIDES RIVER
DEEP** 2000-10-04
(M)
AKCSN78458305 -
Orange Belton



**REIDWOOD
BAYSIDES ISLAND
BREEZE** (F)



**OAKLEY'S
BULLETPROOF**
1993-04-18 (M)
SHSB533692
(Champion USA)

GRAYLOR'S JUST A BITCH (F)
2100036719 (Ch B) - lemon

FAIRRAY ZEPPO 2000-09-21 (M) LOI
3131791 (Ch B) - lemon



**FAIRRAY BLUE
MOON** 2002-12-01 (F)
LOI LO0521110 - BLU
BELTON

BOS DELLA LIVESCIA (M)
JR79635ES

BEA OD BRESTOVACKA ELI (F)
JR78216ES

Mère
CARYAN OD BRESTOVACKA ELI
2013-09-08 (F)
704330
- bluebelton



FAIRRAY FAMILY MAN (M) LOE -
tricolore

ANTARES OD BRESTOVACKA ELI
2013-05-08 (F) 701622 - bluebelton

Eleveur : Emin kuru / Propriétaire : Emin kuru

Taille : 59 cm

Sang italien (estimation) : 77 %

Estimation des points au pédigrée : 14



Note : les données ne sont pas garanties. Elles ont été entrées par les membres sans garantie d'exactitude.