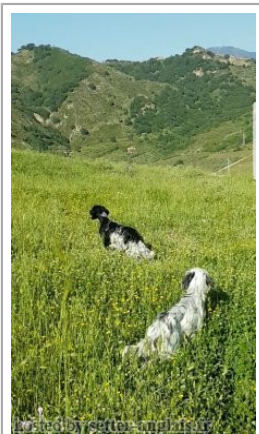
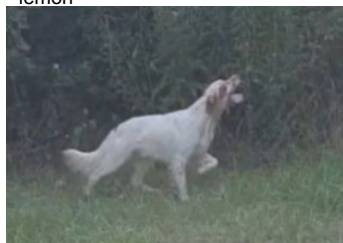


FENIX

2021-09-21 (M) LOI LO21216633
Couleur : nero e bianco (bluebelton)



Père
BYRON
2018-05-18 (M)
LOI 18111549
- lemon



LUCA 2016-06-30 (M) LOI
LO16141347 - lemon

EVA 2015-07-25 (F) LOI LO15153426
- lemon



NATAN 2012-10-03 (M) LOI
LO12157969 (CH IT GQ, Camp. TR. (CH
GQ), CH(IT)) - bluebelton



ALBA 2011-07-15 (F) LOI
LO11124668 (Ch.Ita lavoro) - lemon

RAP 2° 2011-09-01 (M) LOI
LO11160895 - liver tricolore

BORA 2011-01-16 (F) LOI
LO1133431 - lemon

VIRUS DI VAL DI CHIANA
2010-09-28 (M) LOI LO10200321 (TR
GQ) - tricolore



ALBA 2011-07-15 (F) LOI
LO11124668 (Ch.Ita lavoro) - lemon

MORGAN 2009-05-08 (M) LOI
LO1079839 - bluebelton

MISS 2010-05-02 (F) LOI
LO10196020 - lemon

KAPO' 2003-11-10
(M) LOI LO0439835
(Ch IT GQ) - bluebelton



QUATTA
2009-06-11 (F)
LOI LO1085288 -
tricolore



**NOSFERATUS DI VAL
DI CHIANA** 2007-07-10
(M) LOI LO0867580
(Camp. Soc., CH GQ) -
bluebelton



FURIA 2009-04-07 (F) LOI
LO09158746 - bluebelton

LUCA 2003-10-10 (M) LOI
LO0465158 - bluebelton

ATE 2009-07-09 (F) LOI LO09170184
- lemon

KRUJE 2009-05-16 (M) LOI
LO1052199 - bluebelton

ZIMA DELLA VECCHIA IRLANDA
2008-04-28 (F) LOI LO091888 - lemon

VEGA 2005-11-14
(M) LOI
LO0669697 (Ch
GQ) - lemon



ZAIRA DI VAL DI CHIANA 2008-03-20
(F) LOI LO0926101 - bluebelton

**NOSFERATUS DI VAL
DI CHIANA** 2007-07-10
(M) LOI LO0867580
(Camp. Soc., CH GQ) -
bluebelton



FURIA 2009-04-07 (F) LOI
LO09158746 - bluebelton

BRUS 2003-04-21 (M)
LOI LO03108744 -
bluebelton



PANDA 2007-07-06 (F)
LOI LO0876176 -
bluebelton



EGON DELLA BASSANA 2005-09-08
(M) LOI LO0627624 - lemon

LADY 2008-04-24 (F) LOI LO0924514
- lemon



Mère
ELSA
2018-06-03 (F)
LOI LO18120983
- tricolore



GUFO 2015-09-15 (M) LOI
LO15184012 - lemon



DORA 2016-09-30 (F) LOI
LO16197785 - bluebelton

Eleveur : Pietro Eni

Estimation des points au pédigrée : 9

Taux de consanguinité (estimation) : 6.4 %

ALBA (3 X 3) : 0.031860

KAPO' (4,5,5,6,6 X 5,5) : 0.017578

NERO (5,6,6,7,7,7,7 X 6,6,6,7,7) : 0.006226

NEGUS (7,7,8,8,8,8,8,8 X 7,7,7,8,8,8,8,8,8) : 0.003113

VANGOGH DELL'AD MONTES (6,7,7,8,8 X 7,7,7,8,8) : 0.001221

KELLI (6,7,7,8,8,8,8 X 7,7,7,7,8,8,8) : 0.001099

TARO DEL FELINI (7 X 6,6,7) : 0.000610

NORD DI VAL DI CHIANA (7,7,8 X 7,7,8,8) : 0.000580

PICASSO DEL BINARIO (7 X 6,7,8,8,8) : 0.000549

FRANCINI'S LUCA (6,7 X 8,8) : 0.000366

GUFO DI VAL DI CHIANA (6,7,7,8,8,8,8,8 X 7,7,7,8,8) : 0.000244

VERA (7 X 6,7) : 0.000244

RADENTIS SBRANCO (7,7 X 7) : 0.000122

FRANCINI'S SALLY (6 X 8) : 0.000122

LEM DEL DIANELLA (8,8,8 X 8,8,8) : 0.000092

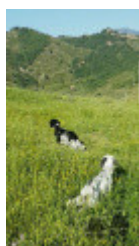
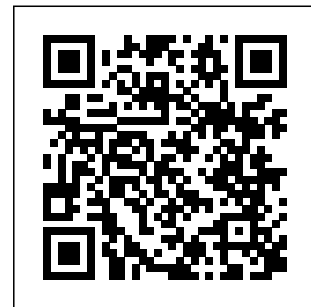
CAMILLA DEL BINARIO (7 X 8) : 0.000061

KIKA (8 X 7,8,8) : 0.000031

FRANCINI'S ODETTE (8 X 8) : 0.000031

DECOR LOT (8 X 8) : 0.000031

ROVAL MOZART (8 X 8) : 0.000031



Note : les données ne sont pas garanties. Elles ont été entrées par les membres sans garantie d'exactitude.