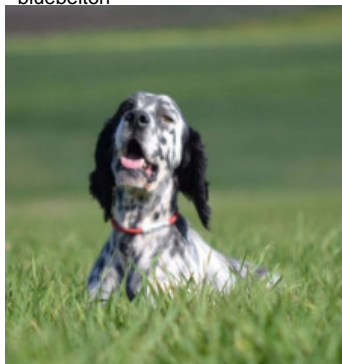


**THANOS DEL FAENOR NI**

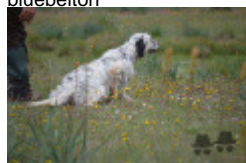
2021-01-08 (M) LOE

Couleur : Tricolor (tricolore) / Dyspl. : A  
[fiche affixe](#)

Père  
**BRUNO DEL FAENOR NI**  
2015-08-01 (M)  
LOE 2295013  
(CH GQ)  
- bluebelton



**MARC DEL FAENOR NI** 2012-10-01  
(M) LOE 2141505 (CH IT GQ) -  
bluebelton



**ETA** 2008-03-10 (F) LOI LO095838 -  
tricolore



**MARK** 2011-06-14 (M) LOI  
LO11112072 (Tr GQ) - bluebelton

**SIMBA DEL FAENOR NI dite TACA**  
2008-10-29 (F) LOE 1865076 (Tr  
becadas) - MARRÓN/BLANCO



**BIG JIM** 2000-12-01 (M) LOI  
LO0188207 (CH GQ, Ch. Int. Lav., Camp.  
Ripr., Ch. Ital. Lav.) - liver



**ASTRA DI GRUMA** 2003-02-10 (F)  
LOI LO0352950 (Ch. Ital. Lav.) -  
bluebelton

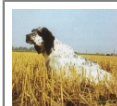
**ROONEY DEL SARGIADAE**  
2004-06-11 (M) LOI  
LO04120540 (Ch GQ,  
Camp. Ital. Assol., Camp.  
Ital. Lav., Camp. Int. Lav.) - bluebelton



**HELI** 2008-09-15 (F) LOI LO0991918  
- tricolore

**ZIP DEL FORTE DEGENFELD**  
2005-02-16 (M) LOI LO0555816 -  
lemon

**JELY DE LA ARMUÑA** (F) LOE  
1508452



**LERRY** 1997-02-14 (M)  
LOI ST555862 (Ch GQ, Ch  
IT) - bluebelton



**RADENTIS TANGA**  
1998-09-15 (F) LOI  
LO9958147 - lemon



**RAS DI GRUMA**  
2001-08-05 (M) LOI  
LO01160073 (Ch. Ital.  
Lav.) - bluebelton

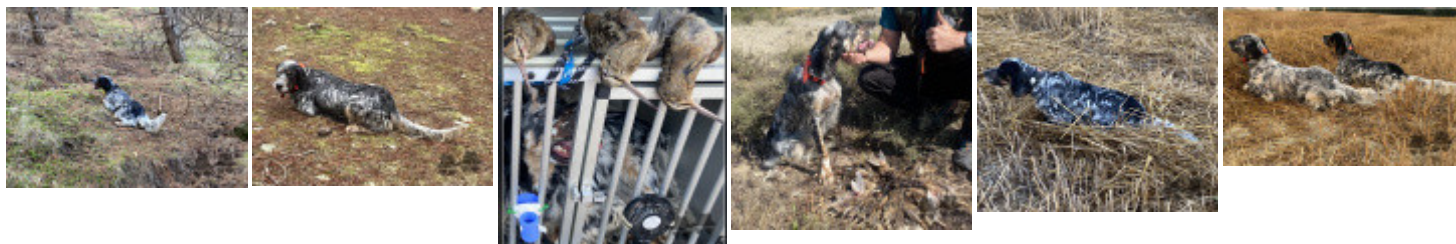
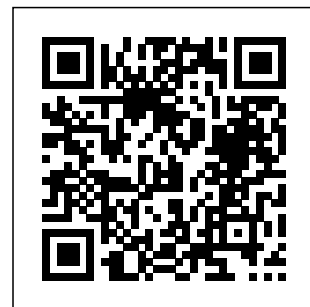
**GILDA DI GRUMA** 1989-11-01 (F) LOI  
ST410396 - bluebelton

<p>Mère</p> <p><u>MIEL DE ARTETA</u> 2016-02-25 (F) LOE 2318231 - bluebelton</p>  <p>MIEL</p>	<p><u>MARC DEL FAENOR NI</u> 2012-10-01 (M) LOE 2141505 (CH IT GQ) - bluebelton</p> 	<p><u>MARK</u> 2011-06-14 (M) LOI LO11112072 (Tr GQ) - bluebelton</p>	<p><u>ROONEY DEL SARGIADAE</u> 2004-06-11 (M) LOI LO04120540 (Ch GQ, Camp. Ital. Assol., Camp. Ital. Lav., Camp. Int. Lav.) - bluebelton</p>
	<p><u>ADARMENDI FRIDA</u> (F) LOE 1965437</p>	<p><u>SIMBA DEL FAENOR NI dite TACA</u> 2008-10-29 (F) LOE 1865076 (Tr becadas) - MARRÓN/BLANCO</p> 	<p><u>HELI</u> 2008-09-15 (F) LOI LO0991918 - tricolore</p>
	<p><u>WILD DE ARTETA</u> (M) LOE 1566984</p>	<p><u>ADARMENDI WANIA</u> (F) LOE 1533922</p>	<p><u>JELY DE LA ARMUÑA</u> (F) LOE 1508452</p>
			<p><u>TITO</u> 1998-06-08 (M) LOE 1109111 (TrGB(E.02)) - lemon</p> 
			<p><u>ADARMENDI RAS</u> (F) LOE 1200113</p>

Propriétaire : Juan Cilveti  
Sang italien (estimation) : 84 %  
Estimation des points au pédigrée : 34

## Taux de consanguinité (estimation) : 15.3 %

MARC DEL FAENOR NI (2 X 2) : 0.127274  
ARNO (5,5,6,6,7,7,8 X 5,6,7,7,8) : 0.010498  
BIG JIM (3,5 X 5) : 0.008362  
TITO (5 X 4,5) : 0.003906  
DECOR LOI (8,8,8,8,8 X 7,7,8,8) : 0.000763  
RADENTIS GIAN (7,8,8,8,8 X 7,8,8,8,8,8) : 0.000732  
RADENTIS SBRANCO (5,7,7 X 7,7) : 0.000519  
ROYAL VIENNA (6,8,8,8 X 8,8,8) : 0.000244  
RADENTIS BORG (6,8,8,8 X 8,8,8) : 0.000122  
HALOA DELLA VECCHIA IRLANDA (7,7,8,8,8 X 7,8) : 0.000092  
DUN DEL MESCHIO (8,8 X 8,8) : 0.000092



Note : les données ne sont pas garanties. Elles ont été entrées par les membres sans garantie d'exactitude.