

**HARD SULTAN SETTER**

2015-08-23 (M) LOF K?F-ES-1023  
Couleur : Fau.PBl.Env. (lemon)



Père  
**RADENTIS CONDOR**  
2007-01-08 (M)  
LOI LO0768323  
- lemon



**RADENTIS TANGO** 2004-05-18 (M)  
LOI LO04104741 - lemon



**RADENTIS BONA** 2004-05-19 (F) LOI  
LO04104750 - lemon



**RADENTIS NOMAR** 1998-03-22 (M)  
LOI LO98133353 ((CHGQ CHITF /  
CHIT.B) - liver



**RADENTIS URSULA** 2002-04-30 (F)  
LOI LO02114635 - lemon

**RADENTIS SBRANCO** 1991-07-01  
(M) LOI ST448908 (CH IB, Ch. Int. Lav.) -  
lemon



**RADENTIS GAIA** 1998-01-11 (F) LOI  
LO98106535 - lemon



**RADENTIS  
SBRANCO**  
1991-07-01 (M) LOI  
ST448908 (CH IB, Ch.  
Int. Lav.) - lemon



**KELLI DELLA  
MARIKA** 1995-08-06  
(F) LOI ST530204 (Ch.  
Ital. Lav.) - bluebelton



**RADENTIS  
SBRANCO**  
1991-07-01 (M) LOI  
ST448908 (CH IB, Ch.  
Int. Lav.) - lemon

**LAILA** 1996-06-10 (F) LOI ST548764 -  
bluebelton



**RADENTIS BORG**  
1987-04-30 (M) LOI  
ST350267 (Ch. Int.  
Lav., CH GQ, Ch. Ital.  
Lav., Camp. Ripr.) -

lemon








**RADENTIS OLA** 1984-09-30 (F) LOI  
ST298174 - lemon



**RADENTIS BORG**  
1987-04-30 (M) LOI  
ST350267 (Ch. Int.  
Lav., CH GQ, Ch. Ital.  
Lav., Camp. Ripr.) -

lemon

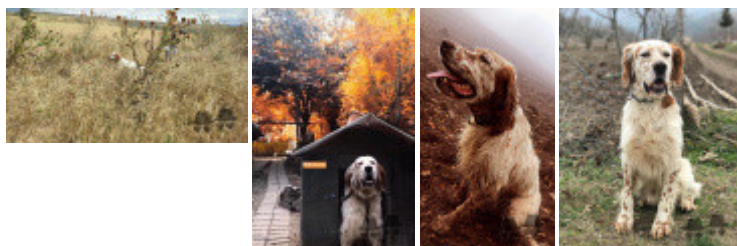
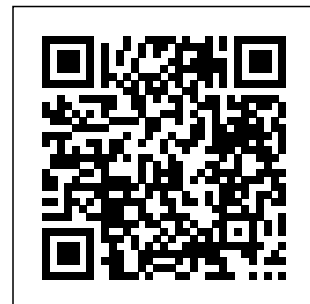
**NILLA** 2000-07-01 (F) LOI LO0143223  
- lemon

Mère <u>BIRBA DEL DUDA</u> (F) LOF 704274	<u>MET</u> (M) LOF 8/133945	<u>PALAZIENSIS RAMBO</u> 1999-11-01 (M) LOI LO0060896 (Ch W0F/CH, IT T, ITF, Camp. Tr. (Ch GQ), CH(ES)T, CH(GB)T) - lemon 	 <u>PALAZIENSIS PEPE</u> 1997-07-03 (M) LOI LO99203608 - liver
		<u>MOLLY</u> 2001-06-06 (F) LOI LO01203325 - tricolore	 <u>DEMBELLA DALMATINSKA</u> 1998-05-04 (M) LOI LO0185742 (Ch. Ital. Lav., Camp. Ripr., Ch. Int. Lav.) - bluebelton
	<u>PALAZIENSIS DORA</u> 2008-07-30 (F) JR703022ES - lemon	<u>ROVAL NEDWED</u> 2003-01-05 (M) LOI LO0366753 - lemon 	 <u>FRENK DEL DIANELLA</u> 1997-09-27 (M) LOI LO9851974 (Ch L, Camp. Tr. (Ch GQ)) - tricolore
		<u>PALAZIENSIS ARCA</u> 2005-11-01 (F) LOI LO0624189 - lemon	 <u>ROVAL LIU</u> 1994-05-25 (F) LOI ST503654 - bluebelton
			 <u>RADENTIS GIUDA</u> 2002-01-18 (M) LOI LO0286481 (Camp. Tr. (Ch GQ), Camp. Ital. Lav.) - liver
			<u>PALAZIENSIS SUSY</u> 2000-12-05 (F) LOI LO0176584 - liver

Sang italien (estimation) : 100 %  
Estimation des points au pédigrée : 8

## Taux de consanguinité (estimation) : 5.1 %

DECOR LOI (6,6,6,6,7,7,7,7,7,7,7,7,8,8,8 X 6,6,6,6,8,8,8,8,8) : 0.023041  
RADENTIS NOMAR (3 X 5) : 0.009018  
RADENTIS SBRANCO (3,4,4 X 6) : 0.006271  
RADENTIS BORG (4,4,5,5,5,6,8 X 7,7) : 0.004028  
DUN DEL MESCHIO (7,7,8,8,8,8,8,8,8,8,8,8,8 X 8,8,8,8,8,8,8,8,8) : 0.003632  
ROVAL MOZART (7,7 X 5,5,7,7,7,8,8,8) : 0.003052  
RADENTIS GIAN (5,5,6,6,6,6,6,7,8 X 8,8) : 0.000584  
ROVAL FLY (8,8 X 6,6,6,6,8,8,8,8) : 0.000549  
DAGA (8,8 X 8,8,8,8) : 0.000244  
FARA (6,6 X 8) : 0.000122  
LORD DEL DIANELLA (7 X 7) : 0.000122  
LOPEZ DELLA BASSANA (8 X 8,8,8) : 0.000092



Note : les données ne sont pas garanties. Elles ont été entrées par les membres sans garantie d'exactitude.