

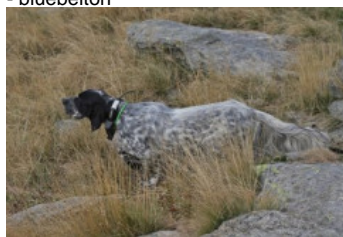
EDU DEL ?ENCANAL?

2016-04-20 (M) LOF KIF-ES-1205
Couleur : Blue Belton (bluebelton)



hosted by setter-anglais.fr

Père
IVO
2009-07-13 (M)
LOI LO09143882
- bluebelton



LUPIN DELLO ZORINO 2005-09-10
(M) LOI LO0643055 (Camp. Ripr.) -
tricolore



PUJOL DEL VARO 2000-06-25 (M)
LOI LO0112419 - bluebelton



LOLA DEL VARO 1996-08-22 (F) LOI
ST547484 - bluebelton



BONIEK 1997-01-10 (M) LOI
LO9835031 (Ch. Ital. Lav., Ch. Int.
Lav., Camp. Ripr.) - bluebelton

LARA DEL VARO 1996-06-13 (F) LOI
ST547382 - tricolore



ASPIS 1990-03-05 (M)
LOI ST416169 (CH GQ,
Camp. Ripr., Ch. Ital. Lav.) -
bluebelton

GIANNA DEL VARO 1993-06-29 (F)
LOI ST485058 - liver



LERRY 1997-02-14 (M)
LOI ST555862 (Ch GQ, Ch
IT) - bluebelton



RADENTIS TANGA
1998-09-15 (F) LOI
LO9958147 - lemon

NOAH DI LORO PICENO 2008-08-09
(F) LOI LO091730 - lemon

BIG JIM 2000-12-01 (M) LOI
LO0188207 (CH GQ, Ch. Int. Lav., Camp.
Ripr., Ch. Ital. Lav.) - liver












FIERA 2002-03-19 (F) LOI
LO02125346 - lemon



FIERO 1996-08-10
(M) LOI ST551356
(CHGQ, Ch ITF, Ch IB, Ch
ITT) - lemon

CASSIA 1994-06-19 (F) LOI
ST507935 - lemon

<p>Mère <u>ASIA</u> 2014-03-19 (F) JR704945ES - bluebelton</p> 	<p><u>TOR DEGLI UBERTI</u> 2008-09-12 (M) LOI LO08140923 (LO08140923) - Liver</p> 	<p><u>RADENTIS MILANO</u> 2004-05-15 (M) LOI LO04104764 - bluebelton</p> 	<p><u>RADENTIS NOMAR</u> 1998-03-22 (M) LOI LO98133353 ((CHGQ CHITF / CHIT.B)) - liver</p> 
	<p><u>AREONORA</u> 2012-05-22 (F) JR704762 - tricolore</p> 	<p><u>CALI</u> 2007-01-21 (F) LOI LO0773181 - bluebelton</p>	<p><u>RADENTIS STELLA</u> 2001-10-24 (F) LOI LO0230668 - bluebelton</p>
	<p><u>DODO DEL BINARIO</u> (M) LOI 20090931 - tricolore</p> 	<p><u>UFO DEL BINARIO</u> 2008-03-28 (M) LOI LO0951439 (Camp. Ital. Lav.) - tricolore</p> 	<p><u>SARA</u> 2003-06-10 (F) LOI LO03150166 - bluebelton</p>
	<p><u>ARTA</u> 2009-01-20 (F) JR702511 - tricolore</p> 	<p><u>DUNA</u> 2004-03-26 (F) LOI LO04108577 - liver tricolore</p>	<p><u>BECKHAM</u> 2002-06-16 (M) LOI LO02143991 (Camp. Tr. (Ch GQ) Camp. Ital. Lav. Camp. Int. Lav.) - tricolore</p> 
		<p><u>CHITA</u> (F) JR701647ES</p>	

Eleveur : AL? ?ENCAN / Propriétaire : ÖZCAN KARAKOYUNLU
Sang italien (estimation) : 100 %
Estimation des points au pédigrée : 7

Taux de consanguinité (estimation) : 2.8 %

RADENTIS GIAN (6,6,6,6,7,7,7,7,8,8 X 6,7,7,7,8,8,8) : 0.009644
DECOR LOT (7,7,7,7,7,8,8,8,8,8,8,8 X 7,7,8,8,8,8,8,8,8) : 0.004486
RADENTIS SBRANCO (5 X 5,6,7,7) : 0.004150
FIERO (4 X 5) : 0.003906
ARNO (5,5,6 X 6,7) : 0.002686
RADENTIS BORG (6 X 6,6,7,7,8,8,8,8) : 0.000977
DUN DEL MESCHIO (8,8,8,8,8,8,8,8 X 8,8,8) : 0.000610
FRANCINI'S ASTON (5 X 7) : 0.000519
BIBA DEL VARO (6 X 7) : 0.000244
CONAD DEL VARO (6 X 7) : 0.000244
HUNT DEL PALISSANDRO (7,7 X 8,8) : 0.000183
EMO DELLA TRAPPOLA (7 X 8,8) : 0.000122
RUDY DEL DIANELLA (6 X 8,8) : 0.000122
FRANCINI'S RAS (6 X 8,8) : 0.000122
BONA DEL PALISSANDRO (8,8 X 8) : 0.000061
ENOS DEL PALISSANDRO (8,8 X 8) : 0.000061
BAIRO (8,8 X 8,8) : 0.000061
GIADA DEL VARO (7,7 X 8) : 0.000061
FLAY DEL DIANELLA (7 X 8) : 0.000061
HALQA DELLA VECCHIA IRLANDA (7,7,8,8 X 8) : 0.000031



Note : les données ne sont pas garanties. Elles ont été entrées par les membres sans garantie d'exactitude.

