

**SAMOTHERION RAMOS**

(M) BEK 198145  
Couleur : Lemon  
[fiche affixe](#)



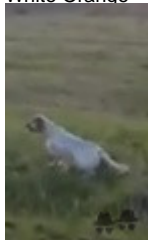
hosted by setter-anglais.fr

**VORRAS** 2011-08-25 (M) BEK  
109528 (Camp Trailer CH Tr GQ, CH IT, CH  
international) - white/orange



Père  
**NEXGEN MORGAN**  
(M)  
BEK 177195  
- lemon

**BETTY TON PRESPO** named  
**MONA** 2015-02-01 (M) BEK 138541 -  
White Orange



**BESINO'S PANTHOS** 2007-08-15 (M)  
BEK 075540 (CH GQ, CH IT) - bluebelton



**ATENEA DE L'EL BALDIO**  
2007-07-03 (F) BEK 1708496 - White  
orange

**RADENTIS NEMO** 2008-03-05 (M)  
LOI LO093825 - lemon



**RADENTIS GIADA** 2008-07-09 (F)  
LOI LO0956053 - bluebelton

**KAPO'** 2003-11-10  
(M) LOI LO0439835  
(CH GQ, CH IT) -  
bluebelton



**TZOUMAKA ANIMUS  
ILIA** (F) BEK 059052 -  
tricolore



**MIRO'** 2005-01-19 (M)  
LOI LO05135204  
(TrGB(E.09)) - bluebelton

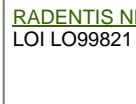


**TRIANA DE L'EL BALDIO** (F) LOE  
1314002 - lemon

**RADENTIS ZUM**  
2002-07-08 (M) LOI  
LO02161851 (Camp.  
Tr. (Ch GQ), Camp. Int.  
Lav., Camp. Ital. Lav.) -  
lemon










**RADENTIS NERINA** 1998-03-22 (F)  
LOI LO99821 - bluebelton



**RADENTIS NOMAR**  
1998-03-22 (M) LOI  
LO98133353 ((CHGQ CHITF /  
CHIT.B)) - liver



**RADENTIS ALICE** 2007-11-01 (F) LOI  
LO0768262 - lemon

<p>Mère <u>SAMOTHERION FEDRA</u> (F) BEK 138245 - tricolore</p>	<p><u>VORRAS</u> 2011-08-25 (M) BEK 109528 (Camp Trailer CH Tr GQ,CH IT,CH international) - white/orange</p> 	<p><u>BESINO'S PANTHOS</u> 2007-08-15 (M) BEK 075540 (CH GQ, CH IT) - bluebelton</p> 	<p><u>KAPO'</u> 2003-11-10 (M) LOI LO0439835 (CH GQ, CH IT) - bluebelton</p> 
	<p><u>SAMOTHERION RANIA</u> (F) BEK 118135 - tricolore</p>	<p><u>ATENEA DE L'EL BALDIO</u> 2007-07-03 (F) BEK 1708496 - White orange</p>	<p><u>BESINO'S PANTHOS</u> 2007-08-15 (M) BEK 075540 (CH GQ, CH IT) - bluebelton</p> 
			<p><u>TRIANA DE L'EL BALDIO</u> (F) LOE 1314002 - lemon</p>
		<p><u>BESINO'S PANTHOS</u> 2007-08-15 (M) BEK 075540 (CH GQ, CH IT) - bluebelton</p> 	<p><u>KAPO'</u> 2003-11-10 (M) LOI LO0439835 (CH GQ, CH IT) - bluebelton</p> 
		<p><u>SAMOTHERION ASSIA</u> (F) BEK 086989 - lemon</p>	<p><u>TZOUMAKA ANIMUS ILIA</u> (F) BEK 059052 - tricolore</p> 
			<p><u>CALIGOLA DI LORO PICENO</u> 2004-08-25 (M) LOI LO0523531 - liver</p>
			<p><u>ZINA</u> (F) BEK</p>

Sang italien (estimation) : 89 %  
Estimation des points au pédigrée : 21

## Taux de consanguinité (estimation) : 17.4 %

VORRAS (2 X 2) : 0.126404  
BESINO'S PANTHOS (3 X 3,3) : 0.031494  
RADENTIS SBRANCO (5,5,6,7,7,8 X 6,7,7) : 0.005318  
RADENTIS BORG (6,6,6,6,7,7,7,8,8,8 X 7,7,7,7,8,8,8) : 0.005127  
RADENTIS GIAN (7,7,7,7,7,7,7,8,8,8,8,8 X 7,8,8,8,8,8) : 0.001892  
DECOR LOT (8,8,8,8,8,8,8,8,8,8,8,8 X 8,8,8,8,8,8) : 0.001862  
ARNO (6,6,7 X 6,7,8) : 0.001648  
FRANCINI'S LUCA (7,7 X 7) : 0.000244  
RADENTIS RAISSA (7,7 X 7,7,7) : 0.000122  
ROVAL MOZART (8,8,8 X 8) : 0.000092  
ROVAL VIENNA (7 X 7,8) : 0.000061  
OLAF DEI TRE PONTI (8,8 X 8,8,8) : 0.000031





Note : les données ne sont pas garanties. Elles ont été entrées par les membres sans garantie d'exactitude.