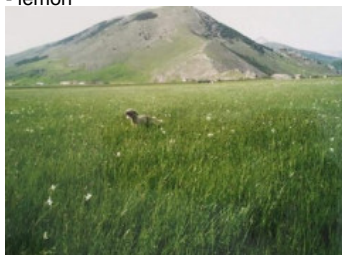


RADENTIS PIRLO

2009-06-12 (M) LOI LO106020

Couleur : Bluebelton / Titres : Ch P / Dyspl. : A
[fiche affixe](#)

Père
RADENTIS INDIO
2006-01-12 (M)
LOI LO0653000
- lemon



RADENTIS ZUM 2002-07-08 (M) LOI
LO02161851 (Camp. Tr. (Ch GQ), Camp.
Int. Lav., Camp. Ital. Lav.) - lemon



RADENTIS NERINA 1998-03-22 (F)
LOI LO99821 - bluebelton

FIERO 1996-08-10 (M) LOI ST551356
(CHGQ, Ch ITF, Ch IB, Ch ITT) - lemon



GIBELTARIK BLONDIE 2000-12-11
(F) LOI LO02122551 (CHIT.T) - lemon



RADENTIS SBRANCO 1991-07-01
(M) LOI ST448908 (CH IB, Ch. Int. Lav.) -
lemon



KELLI DELLA MARIKA 1995-08-06
(F) LOI ST530204 (Ch. Ital. Lav.) -
bluebelton



ARNO 1988-04-17
(M) LOI ST374735
(Ch. Int. Lav., Camp.
Ripr., Ch. Ital. Lav.) -
lemon



INDIRA 1990-06-01
(F) LOI ST423625 (Ch
IT) - lemon



bluebelton

**DODGE DEL
TIRSO** 1998-02-14
(M) LOI LO9942918
(Ch IT IT-T, CHIB,
Camp. Tr. (Ch GQ)) -



RADENTIS ERICA
1995-05-25 (F) LOI
ST531494 ((CH(I)B)) -
lemon



lemon

RADENTIS BORG
1987-04-30 (M) LOI
ST350267 (Ch. Int.
Lav., CH GQ, Ch. Ital.
Lav., Camp. Ripr.) -



lemon

RADENTIS OLA 1984-09-30 (F) LOI
ST298174 - lemon









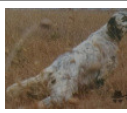
lemon

RADENTIS BORG
1987-04-30 (M) LOI
ST350267 (Ch. Int.
Lav., CH GQ, Ch. Ital.
Lav., Camp. Ripr.) -



lemon

ZARA DELLA MARIKA 1993-06-10
(F) LOI ST482071 - bluebelton

<p>Mère <u>AMBRA</u> 2004-07-21 (F) LOI LO0519780 - bluebelton</p>	<p><u>RADENTIS BOSS</u> 1997-01-13 (M) LOI ST559823 - lemon</p> 	<p><u>RADENTIS SBRANCO</u> 1991-07-01 (M) LOI ST448908 (CH IB, Ch. Int. Lav.) - lemon</p> 	<p><u>RADENTIS BORG</u> 1987-04-30 (M) LOI ST350267 (Ch. Int. Lav., CH GQ, Ch. Ital. Lav., Camp. Ripr.) - lemon</p> 
	<p><u>FRANCINI'S MAILA</u> 2002-01-12 (F) LOI LO0285778 - bluebelton</p>	<p><u>ODE DEL SOLE</u> 1993-09-10 (F) LOI ST490145 - liver</p>	<p><u>FRANCINI'S JEFF</u> 1993-04-03 (M) LOI ST479317 (Ch. Ital. Lav., Ch. Int. Lav., Camp. Ripr.) - bluebelton</p> 
		<p><u>FRANCINI'S ITALIA</u> 1994-07-16 (F) LOI ST506099 - bluebelton</p>	<p><u>AMBO DEL VARO</u> 1987-10-04 (M) LOI ST360725 (Ch. Int. Lav.) - lemon</p> 
			<p><u>UANA DEL SOLE</u> 1987-01-05 (F) LOI ST342352 - liver</p>
			<p><u>FRANCINI'S LUCA</u> 1989-07-08 (M) LOI ST404483 (Ch. Ital. Lav., CH GQ, Ch. Int. Lav., Camp. Ripr.) - tricolore</p> 
			<p><u>FRANCINI'S SALLY</u> 1986-01-19 (F) LOI ST325298 (Camp. Ripr.) - bluebelton</p>
			<p><u>FRANCINI'S KIGA</u> 1986-02-09 (M) LOI ST325299 (Ch. Int. Lav., CH GQ, Ch. Ital. Lav., Camp. Ripr.) - bluebelton</p> 
			<p><u>FRANCINI'S MELODY</u> 1989-07-08 (F) LOI ST404486 - bluebelton</p>

Propriétaire : Manuel Russo-ALLMANSUR (doallmansur@gmail.com)

Puce : 380260040030441

Estimation des points au pédigrée : 35

Taux de consanguinité (estimation) : 9.3 %

RADENTIS SBRANCO (3,5 X 3) : 0.041809
RADENTIS GIAN (5,5,5,7,7,7 X 5,5) : 0.009857
DUN DEL MESHIO (7,7,7,7,8,8,8,8,8,8,8,8 X 6,6,6,7,7,7,8,8,8,8,8) : 0.008636
ODE DEL SOLE (5 X 3) : 0.007812
RADENTIS BORG (4,4,6 X 4) : 0.007812
DECOR LOT (6,6,6,6,6,7,7,7,7,8,8,8,8,8 X 6,6,6,6) : 0.007568
FRANCINI'S LUCA (5 X 4) : 0.003906
AMBO DEL VARO (6,6 X 4) : 0.001953
DEM (6 X 5,5) : 0.000977
FRANCINI'S LORI (6 X 5,5) : 0.000977
ATOS DELLE TORRICELLE (7,7 X 5) : 0.000488
TRUEBA DELLA FAGIANA (8,8 X 8,8,8,8,8) : 0.000244
BERNA (7,8,8 X 6) : 0.000244
FRANCINI'S VANITY (7 X 6,6,6) : 0.000244
LEM DEL RESEGONE (8 X 6,6,7,7,7) : 0.000244
CRISMANI OLAF (8,8,8,8 X 7,7,7,8,8,8,8) : 0.000122
LINDO 3 DI CEREIA (8,8 X 8,8,8) : 0.000122
MUR (8,8 X 7) : 0.000122
PINO DI CEREIA (7,7 X 7,8) : 0.000122
DAGA (8,8,8 X 8,8,8) : 0.000092
LINDA DI CEREIA (8,8 X 8,8) : 0.000061



Note : les données ne sont pas garanties. Elles ont été entrées par les membres sans garantie d'exactitude.

