

DENDABERRI YAIRA

2021-10-18 (F) LOE 2617975

Couleur : Tricolor (tricolore)

[fiche affixe](#)

Père

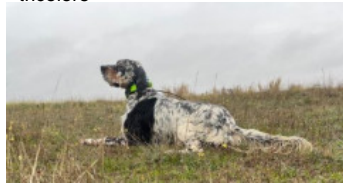
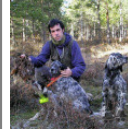
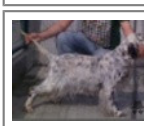
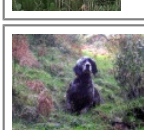
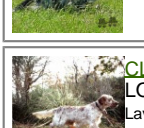
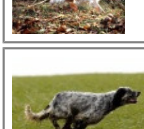
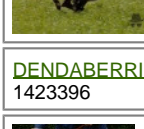
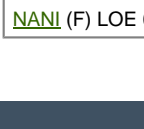
DENDABERRI XENON

2020-04-05 (M)

LOE 2530620

(TRIALER MONTAÑA TRIALER BECADAS)

- tricolore

**DENDABERRI PIRLO** 2013-07-01 (M)
LOE 1747738 (Ch IT) - bluebelton**DENDABERRI JAI** 2007-03-12 (M)
LOE 1704343 (TrCP, TrPR, TrBC) -
bluebelton**BRUJA DEL ALTO PAS** 2009-04-02
(F) LOE 1871490 - bluebelton**DENDABERRI OBAMA** 2012-10-10
(M) LOE 2130969 (CH IT) - lemon**DENDABERRI LORA** 2009-12-12 (F)
LOE 1918681 - lemon**PALAZIENSIS RAMBO**
1999-11-01 (M) LOI
LO0060896 (Ch W0F/ICH, IT T,
ITF, Camp. Tr. (Ch GQ), CH(ES),
CH(GB)T) - lemon**UMBLANA DEL
CAVALDROSSA**
2000-06-01 (F) LOI
LO0336882 -
bluebelton**GIBELTARIK CHESTER**
2001-11-05 (M) LOE
KGC02202 (Ch GQ) -
lemon**IRA DE
PIEDRALLADA**
2005-04-13 (F) LOE
1543735 - bluebelton**RADENTIS ZUM**
2002-07-08 (M) LOI
LO02161851 (Camp.
Tr. (Ch GQ), Camp. Int.
Lav., Camp. Ital. Lav.) -
lemon**ARA DEL ARAVINEJO** 2005-08-03
(F) LOE 1544526 - lemon**GIBELTARIK CHESTER**
2001-11-05 (M) LOE
KGC02202 (Ch GQ) -
lemon**DENDABERRI IRATXE**
2006-10-12 (F) LOE -
lemon**MARZALE'S DICK** 2001-02-06 (M)
LOI LO01107481 (Ch. Ital. Lav.) -
tricolore**NERO** 1997-03-29 (M)
LOI LO9817889 (Ch T, Ch
GQ) - bluebelton**CLOE** 1997-02-18 (F)
LOI LO9812233 (Ch. Ital.
Lav.) - lemon**KAPO'** 2003-11-10
(M) LOI LO0439835
(Ch IT GQ) - bluebelton**DENDABERRI FURIA** (F) LOE
1423396**BECKER OD BENCICA**
1997-04-03 (M)
HR11621 (Ch) - tricolore**ONDA DEI
LADERCHI**
1998-12-04 (F) LOI
LO99110409 (CH IB) -
bluebelton**OSCAR** (M) LOE
821986**NANI** (F) LOE 633367

Mère

QSA

2017-03-15 (F)

LOE 2361236

- bluebelton

**DENDABERRI LAGUN** 2009-10-21
(M) LOE 32747**DENDABERRI KELLY** 2008-09-01 (F)
LOE 1823430 - bluebelton**DENDABERRI JI** (F) LOE**LOTHAR DEL LADERCHI** 2004-10-06
(M) LOI LO0541557 (CH IB) - tricolore**DENDABERRI DUSSI** (F) LOE
1265657

Sang italien (estimation) : 87 %
Estimation des points au pédigrée : 19

Taux de consanguinité (estimation) : 2 %

DENDABERRI DUSSI (5 X 3,5) : 0.009766
PALAZIENSIS RAMBO (4 X 5) : 0.003906
RADENTIS GIAN (7,7,7,8,8,8,8,8,8 X 6,8) : 0.001831
SWING DELLA VECCHIA IRLANDA (7,7,7,8,8,8 X 6,8) : 0.001221
NEGUS (6 X 6,6,7) : 0.001221
CINA DE GONZA LOSA (7,7 X 5,7) : 0.000610
MARK DELLA BASSANA (7 X 6,6,7,8) : 0.000610
BORA DELLADERCHI (7 X 6,7,8) : 0.000366
DECOR LOT (8,8,8 X 7,7,8) : 0.000275
FALCO (8,8 X 6,8,8) : 0.000183
LIY OD BENCICA (8,8,8 X 6,8) : 0.000153
GIP DELLA BASSANA (8 X 7,7,8,8,8,8) : 0.000153
LEM DEL DIANELLA (7 X 7,7,7,8) : 0.000122
DERQ (8 X 8,8,8) : 0.000031
DEM (8 X 8) : 0.000031



Note : les données ne sont pas garanties. Elles ont été entrées par les membres sans garantie d'exactitude.