

**DENDABERRI YULEN**

2021-10-18 (M) LOE 2617982

Couleur : Tricolore (tricolore)

[fiche affixe](#)

Père

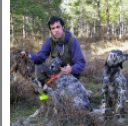
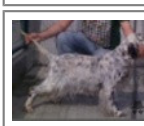
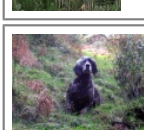
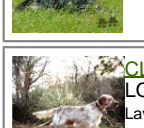
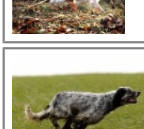
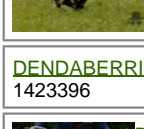
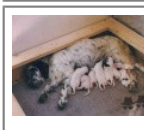
**DENDABERRI XENON**

2020-04-05 (M)

LOE 2530620

(TRIALER MONTAÑA TRIALER BECADAS)

- tricolore

**DENDABERRI PIRLO** 2013-07-01 (M)  
LOE 1747738 (Ch IT) - bluebelton**DENDABERRI SANTA** 2015-09-14 (F)  
LOE 2286729 (CAMPEONA DE EUROPA  
BECADAS 2017-2019-2021 CAMPEONA  
EUROPA MONTAÑA 2018) - lemon**DENDABERRI JAI** 2007-03-12 (M)  
LOE 1704343 (TrCP, TrPR, TrBC) -  
bluebelton**BRUJA DEL ALTO PAS** 2009-04-02  
(F) LOE 1871490 - bluebelton**DENDABERRI OBAMA** 2012-10-10  
(M) LOE 2130969 (CH IT) - lemon**DENDABERRI LORA** 2009-12-12 (F)  
LOE 1918681 - lemon**MARZALE'S DICK** 2001-02-06 (M)  
LOI LO01107481 (Ch. Ital. Lav.) -  
tricolore**DENDABERRI JI** (F) LOE**LOTHAR DELLADERCHI** 2004-10-06  
(M) LOI LO0541557 (CH IB) - tricolore**DENDABERRI DUSSI** (F) LOE  
1265657**PALAZIENSIS RAMBO**  
1999-11-01 (M) LOI  
LO0060896 (Ch W0F/ICH, IT T,  
ITF, Camp. Tr. (Ch GQ), CH(ES),  
CH(GB)T) - lemon**UMBLANA DEL  
CAVALDROSSA**  
2000-06-01 (F) LOI  
LO0336882 -  
bluebelton**GIBELTARIK CHESTER**  
2001-11-05 (M) LOE  
KGC02202 (Ch GQ) -  
lemon**IRA DE  
PIEDRALLADA**  
2005-04-13 (F) LOE  
1543735 - bluebelton**RADENTIS ZUM**  
2002-07-08 (M) LOI  
LO02161851 (Camp.  
Tr. (Ch GQ), Camp. Int.  
Lav., Camp. Ital. Lav.) -  
lemon**ARA DEL ARAVINEJO** 2005-08-03  
(F) LOE 1544526 - lemon**GIBELTARIK CHESTER**  
2001-11-05 (M) LOE  
KGC02202 (Ch GQ) -  
lemon**DENDABERRI IRATXE**  
2006-10-12 (F) LOE -  
lemon**NERO** 1997-03-29 (M)  
LOI LO9817889 (Ch T, Ch  
GQ) - bluebelton**CLOE** 1997-02-18 (F)  
LOI LO9812233 (Ch. Ital.  
Lav.) - lemon**KAPO'** 2003-11-10  
(M) LOI LO0439835  
(Ch IT GQ) - bluebelton**DENDABERRI FURIA** (F) LOE  
1423396**BECKER OD BENCICA**  
1997-04-03 (M)  
HR11621 (Ch) - tricolore**ONDA DEI  
LADERCHI**  
1998-12-04 (F) LOI  
LO99110409 (CH IB) -  
bluebelton**OSCAR** (M) LOE  
821986**NANI** (F) LOE 633367

Mère

**QSA**

2017-03-15 (F)

LOE 2361236

- bluebelton

**DENDABERRI LAGUN** 2009-10-21  
(M) LOE 32747**DENDABERRI KELLY** 2008-09-01 (F)  
LOE 1823430 - bluebelton

Sang italien (estimation) : 87 %  
Estimation des points au pédigrée : 19

## Taux de consanguinité (estimation) : 2 %

DENDABERRI DUSSI (5 X 3,5) : 0.009766  
PALAZIENSIS RAMBO (4 X 5) : 0.003906  
RADENTIS GIAN (7,7,7,8,8,8,8,8,8 X 6,8) : 0.001831  
SWING DELLA VECCHIA IRLANDA (7,7,7,8,8,8 X 6,8) : 0.001221  
NEGUS (6 X 6,6,7) : 0.001221  
CINA DE GONZA LOSA (7,7 X 5,7) : 0.000610  
MARK DELLA BASSANA (7 X 6,6,7,8) : 0.000610  
BORA DELLADERCHI (7 X 6,7,8) : 0.000366  
DECOR LOT (8,8,8 X 7,7,8) : 0.000275  
FALCO (8,8 X 6,8,8) : 0.000183  
LIY OD BENCICA (8,8,8 X 6,8) : 0.000153  
GIP DELLA BASSANA (8 X 7,7,8,8,8,8) : 0.000153  
LEM DEL DIANELLA (7 X 7,7,7,8) : 0.000122  
DERO (8 X 8,8,8) : 0.000031  
DEM (8 X 8) : 0.000031



Note : les données ne sont pas garanties. Elles ont été entrées par les membres sans garantie d'exactitude.