








**VIRKA DELLA GEMINIOLA**

2003-01-02 (F) LOI LO0348294  
Couleur : BIANCO NERO (bluebelton)  
[fiche affixe](#)

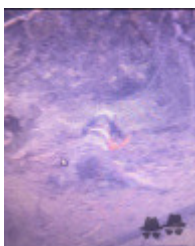


<p>Père</p> <p><a href="#">ARNO DELLA GEMINIOLA</a> 1998-01-05 (M) LOI LO98110630 - lemon</p>	<p><a href="#">CIRO</a> 1995-01-22 (M) LOI ST514532 (Ch Italie T, IT T, Reproducteur) - tricolore</p>	<p><a href="#">ZACO DELL'AVETO</a> 1990-06-04 (M) LOI ST426621 - liver</p>	<p><a href="#">DIPDIWER DELL'AVETO</a> 1978-08-23 (M) LOI ST143158 - liver</p>
	<p><a href="#">TANGA</a> 1993-01-24 (F) LOI ST477182 - bluebelton</p>	<p><a href="#">ORSERA DELL'AVETO</a> 1983-08-26 (F) LOI ST274485 - liver</p>	<p> <a href="#">OKEY DEL DIANELLA</a> 1989-08-18 (M) LOI ST404088 (Ch IT T, Ch Reproducteur) - bluebelton</p>
<p>Mère</p> <p><a href="#">GEA DELLA GEMINIOLA</a> 1999-05-10 (F) LOI LO99165174 - bluebelton</p>	<p><a href="#">GIULY DELLA VECCHIA IRLANDA</a> 1991-01-09 (F) LOI ST435083 - lemon</p>	<p><a href="#">ARNO</a> 1988-04-17 (M) LOI ST374735 (Ch. Int. Lav., Camp. Ripr., Ch. Ital. Lav.) - lemon</p> <p></p>	<p> <a href="#">CRISMANI ATOS</a> 1980-02-01 (M) LOI ST208763 (Ch IT) - liver</p>
	<p><a href="#">ARA DEL VARO</a> 1987-01-02 (F) LOI ST340756 - tricolore</p>	<p><a href="#">SWING DELLA VECCHIA IRLANDA</a> 1984-08-01 (F) LOI ST295020 (Ch L) - lemon</p>	<p> <a href="#">RADENTIS GIAN</a> 1983-01-02 (M) LOI ST258470 (Ch. Ital. Lav., Ch. Int. Lav., Camp. Ripr.) - lemon</p>
<p><a href="#">GIUDA</a> 1996-06-02 (M) LOI ST545551 - bluebelton</p>	<p><a href="#">ASTEL</a> 1990-03-05 (M) LOI ST416170 (CH GQ) - bluebelton</p> <p></p>	<p><a href="#">CASMIR</a> 1988-03-27 (M) LOI ST370620 - bluebelton</p>	<p><a href="#">AKIRA DEL VARO</a> 1987-10-04 (F) LOI ST360728 - lemon</p>
	<p><a href="#">DIANA</a> 1988-05-29 (F) LOI ST380366 - tricolore</p>	<p><a href="#">FRANCINI'S ASTON</a> 1986-01-19 (M) LOI ST325293 (Camp. Ripr., Ch. Int. Lav., Ch. Ital. Lav.) - bluebelton</p> <p></p>	<p><a href="#">TIRE</a> 1981-02-15 (M) LOI ST237830 (Ch. Int. Lav.) - bluebelton</p>
<p><a href="#">CAPRICE</a> 1994-02-18 (F) LOI ST497165 - bluebelton</p>	<p><a href="#">DENNY</a> 1986-10-18 (F) LOI ST339632 - tricolore</p>	<p> <a href="#">FRANCINI'S RAS</a> 1982-10-26 (M) LOI ST254436 (Camp. Ripr.) - bluebelton</p>	<p><a href="#">RUDY DEL DIANELLA</a> 1981-09-16 (F) LOI ST239145 - bluebelton</p>
			<p><a href="#">KISS</a> 1980-03-02 (M) LOI ST209515 - bluebelton</p>
			<p><a href="#">USCA DELLA BASSANA</a> 1983-04-08 (F) LOI ST276636 - tricolore</p>

Eleveur : BALUGANI CLAUDIO / Propriétaire : Gomez Carro Jasmael  
Tatouage : 3XBC14  
Estimation des points au pédigrée : 11

## Taux de consanguinité (estimation) : 1.4 %

LEM DEL RESEGONE (6,7,7,8 X 5,6,6,8) : 0.004669  
RADENTIS GIAN (4 X 5) : 0.004150  
ARNO II DI VAL D'IDICE (7,8,8 X 7,7,8,8,8,8) : 0.000946  
DUN DEL MESHIO (6,7,7,8 X 7,7,8) : 0.000824  
ARTU (7,8 X 6,7,8,8) : 0.000732  
VAVA DEL TIDONE (6 X 8,8,8) : 0.000366  
BRILL 2 DEL ROVERE (8,8,8 X 8,8,8) : 0.000275  
CRISMANI DIK (8,8 X 6) : 0.000244  
MERA DELL ORSONE (8 X 5) : 0.000244  
ARDA DELL ORSONE (7,8 X 7) : 0.000183  
VALIANT KIRK (7,8 X 7) : 0.000183  
MISS 3 DELLE VALLATE (8 X 6,7,8,8) : 0.000153  
TRUEBA DELLA FAGIANA (8 X 7,7) : 0.000122  
SHARNBERRY NICK (8,8 X 7) : 0.000122  
ALMAR DELTA (8 X 7,8,8) : 0.000092  
VIMON REVEL (8,8 X 7,8) : 0.000092  
BRICK DEL ROVERE (7,8 X 8) : 0.000092  
CORA DEL VOLO (8 X 7,7,8,8) : 0.000061  
BOBET DI SAN FAUSTINO (8 X 7) : 0.000061  
KROMETOR CINTIA (8 X 7) : 0.000061  
NIVO DELLA NIVA (8 X 7) : 0.000061  
CRANACH DEL VOLO (8,8 X 8) : 0.000061  
SONIA DEL ROVERE (8 X 8) : 0.000031  
NELLY EU AV TROLLBO (8,8 X 8) : 0.000031



Note : les données ne sont pas garanties. Elles ont été entrées par les membres sans garantie d'exactitude.

