

MOSTITXUALDE SHARK

2021-11-13 (M) LOE 2618020
 Couleur : Blanco y negro (bluebelton)
[fiche affixe](#)



Père
MOSTITXUALDE NITRO
 2017-10-25 (M)
 LOE 2404604
 - bluebelton



MOSTITXUALDE HIL 2012-05-20 (M)
 LOE 2103349 (Vencedor IX Master CCB)



MOSTITXUALDE JIPI 2014-09-07 (F)
 LOE 2231888 - bluebelton



GAYANGOS ZAR (M) LOE 1340604 -
 tricolore



FERGIE DES SEPT PROVINCES
 2010-05-18 (F) LOF 210530 -
 bluebelton



FAST ARROSI 2010-07-19 (M) LOE
 1968971 - lemon



MOSTITXUALDE HAMAICA
 2012-05-20 (F) LOE 2103346 -
 bluebelton



PALU' 1993-09-04
 (M) LOE 662202 (Tr
 GQ) - lemon

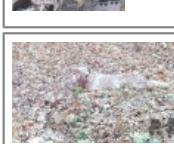


TAX DE PERRERAS JAY 1995-03-25
 (F) LOE 673347 - tricolore

**RAFALE DES SEPT
 PROVINCES**
 2000-06-11 (M) LOF
 154241/26514 (TR) -
 bluebelton



**UTZI DES SEPT
 PROVINCES** 2003-05-24
 (F) LOF 171551/33593
 (Trialer CH-TR) - bluebelton



BONO ARROSI
 (M) LOE 1669371




CEFA I DE PLAYABARRI (F) LOE
 1715067



GAYANGOS ZAR
 (M) LOE 1340604
 - tricolore

**FERGIE
 DES SEPT
 PROVINCES**
 2010-05-18
 (F) LOF

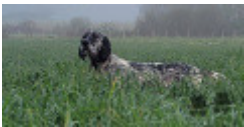
210530 - bluebelton

<p>Mère</p> <p><u>MOSTITXUALDE OLA</u> 2018-07-15 (F) LOE 2442946 - lemon</p> 	<p><u>PRADO DE SOSOBAL</u> 2010-06-22 (M) LOE 1976990 - lemon</p>	<p><u>EURO DE SOSOBAL</u> (M) LOE 1171898</p>	<p><u>LIDER DE PLAYABARRI dit LEADER</u> 1996-11-01 (M) LOE 856545 (Ch A, Ch T, Tr GQ) - lemon</p> <p><u>GLENDIA</u> (F) LOE 693903</p>
		<p><u>MENTA DE SOSOBAL</u> 2003-10-02 (F) LOE 1412929 - bluebelton</p> 	<p><u>KEN</u> 1998-05-10 (M) LOE 1167659 (Champion, Trialer GQ) - lemon</p> <p><u>EA DE SOSOBAL</u> (F) LOE 1171890</p>
	<p><u>MARA</u> 2016-06-07 (F) LOE 2315412 - bluebelton</p>	<p><u>MOSTITXUALDE HIL</u> 2012-05-20 (M) LOE 2103349 (Vencedor IX Master CCB)</p> 	<p><u>GAYANGOS ZAR</u> (M) LOE 1340604 - tricolore</p> <p><u>FERGIE DES SEPT PROVINCES</u> 2010-05-18 (F) LOF 210530 - bluebelton</p>
		<p><u>MENDI</u> 2010-06-20 (F) LOE 1962092 - bluebelton</p>	<p><u>FORLI DE SALLOBENTE</u> (M) LOE 1530771</p> <p><u>JAI</u> (F) LOE 1465648</p>

Sang italien (estimation) : 64 %

Taux de consanguinité (estimation) : 9.7 %

MOSTITXUALDE HIL (2 X 3) : 0.063141
PALU' (4,5 X 5,5,6) : 0.008995
FERGIE DES SEPT PROVINCES (3,4 X 4) : 0.008057
GAYANGOS ZAR (3,4 X 4) : 0.007812
SWING DELLA VECCHIA IRLANDA (5,6,7,8,8 X 6,6,6,7) : 0.003113
RADENTIS GIAN (5,6,7,7,8,8 X 6,6,7,7,8) : 0.003080
ARNO (7,7,8 X 5) : 0.001221
DECOR LOI (6,7,8,8,8 X 7,7,7,8,8) : 0.000671
ALMER (8,8 X 8,8) : 0.000122
FURIA DEL VALLE DE MENA (7 X 7) : 0.000122
JEFF DE PLAYABARRI (6 X 8) : 0.000122
FALCO (8 X 7,8,8) : 0.000092
SARA (7 X 8) : 0.000061
BOI (8 X 7) : 0.000061
VENISE (8 X 8) : 0.000031



Note : les données ne sont pas garanties. Elles ont été entrées par les membres sans garantie d'exactitude.

