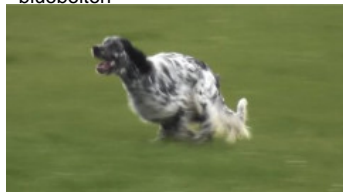


**QUESS DELL'ABAZIA**

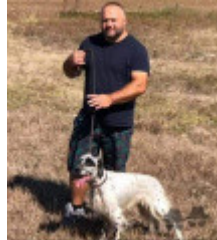
2017-02-18 (M) LOI LO1769972  
Couleur : TRICOLORE  
[fiche affixe](#)



Père  
**NENCINI'S GEKO**  
2014-04-25 (M)  
LOI LO1481296  
- bluebelton



**MARZALE'S EUFRATE** 2010-06-01  
(M) LOF 269095/44830 (CH GQ (Camp. Tr.), CH IT, Camp. Ripr.) - bluebelton



**NENCINI'S SELVAGGIA** 2008-06-17  
(F) LOI LO0936095 (CH(I)B, Ch. Ital. Lav.) - lemon



**VEGA** 2005-11-14 (M) LOI LO0669697 (Ch GQ) - lemon



**GINEVRA DELL'ABAZIA** 2010-06-06  
(F) LOI LO10169846 - tricolore

**ORIO** 2002-05-14 (M) LOI LO02116390 (Camp. Tr. (Ch GQ)) - bluebelton



**BICEZIA DELLA RISERVA REALE**  
2007-07-18 (F) LOI LO0879129 (Camp. Ripr.) - bluebelton



**BERNIE DEI QUARTI** 2003-10-20 (M)  
LOI LO0429137 (Ch. Ital. Lav., Ch. Int. Lav.) - tricolore



**NENCINI'S TINA** 2006-04-05 (F) LOI LO06129041 (Ch. Ital. Lav., Ch Int. Lav., Ch Ital. Bell., Ch Assoluto) - tricolore



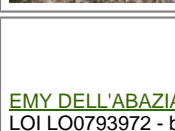
**MARTIANISIUM LUTER** 2001-05-05  
(M) LOI LO01138037 (CH GQ (Camp. Tr.)) - bluebelton



**MARTIANISIUM FRINA** 2002-01-22  
(F) LOI LO0247253 (Camp. Ripr.) - bluebelton



**MUR DELL'ABAZIA** 2003-08-10 (M)  
LOI LO047122 (Camp. Ital. Lav.) - tricolore

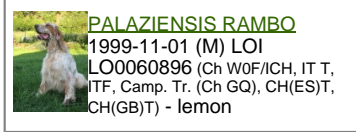


**EMY DELL'ABAZIA** 2007-03-14 (F)  
LOI LO0793972 - bluebelton

**TODAY** 2001-05-07  
(M) LOI LO01146212 (Camp. Tr. (Ch GQ)) - bluebelton



**TOSCA DELLE OROBICHE**  
1999-11-19 (F) LOI LO0035313 (Camp. Ripr.) - bluebelton



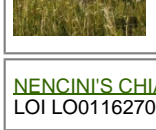
**PALAZIENSIS RAMBO**  
1999-11-01 (M) LOI LO0060896 (Ch WOF/CH, IT T, ITF, Camp. Tr. (Ch GQ), CH(ES)T, CH(GB)T) - lemon

**MEA** 2002-05-07 (F) LOI LO0295505 (CH(I)B) - tricolore

**MONSIEUR** 1999-03-16 (M) LOI LO99197718 (Ch. Ital. Lav.) - tricolore

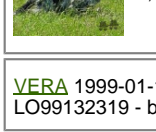
**DEMETRA DEL MANGIA** 2000-03-25  
(F) LOI LO00129327 - bluebelton

**NENCINI'S BOY**  
2005-04-10 (M) LOI LO05132310 - tricolore



**NENCINI'S CHIARA** 2001-04-01 (F)  
LOI LO01162708 - lemon

**NERO** 1997-03-29 (M)  
LOI LO9817889 (Ch T, Ch GQ) - bluebelton



**VERA** 1999-01-10 (F) LOI LO99132319 - bluebelton

**MICO DEL MUGNONE** 1996-04-21  
(M) LOI ST544163 - bluebelton

**MARTIANISIUM DRINA** 2000-12-08  
(F) LOI LO0167926 - bluebelton

**FIERO** 1996-08-10  
(M) LOI ST551356 (CHGQ, Ch ITF, Ch IB, Ch ITT) - lemon



**PUNIPEGGI DELL'ABAZIA**  
1997-06-23 (F) LOI LO98109146 - tricolore

**KAPO'** 2003-11-10  
(M) LOI LO0439835 (Ch IT GQ) - bluebelton



**ASIA** 2000-10-23 (F) LOI LO0180242 - lemon

Eleveur : ODDONE PIERO RODOLFO / Propriétaire : ODDONE PIERO RODOLFO

Puce : 380260043232072

Estimation des points au pédigrée : 32

## Taux de consanguinité (estimation) : 1.3 %

NEGUS (6,6 X 6,6,6,6,7,7,7,8,8) : 0.005859

ARNO (6,7,8 X 5) : 0.001709

FRANCINI'S LUCA (7,7,7 X 6,6) : 0.001465

DECOR LOT (8,8,8,8,8 X 7,7,8,8,8,8,8) : 0.001251

RADENTIS GIAN (7,7,8,8 X 6,8,8) : 0.001099

LEM DEL DIANELLA (7,7,8 X 7,7,7,7,7,8,8,8) : 0.000641

DEM (8,8,8,8,8,8,8 X 7,7) : 0.000488

FRANCINI'S SALLY (7 X 6) : 0.000244

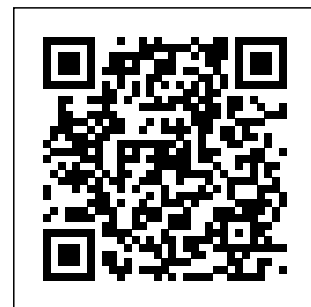
OLAF DEL TRE PONTI (8 X 7,8) : 0.000092

DUN DEL MESCHIO (8 X 8,8,8) : 0.000092

ORFEO DELLA TRAPPOLA (8,8 X 8) : 0.000061

BERNA (8 X 8) : 0.000031

FRANCINI'S RAS (8 X 7,8) : 0.000031



Note : les données ne sont pas garanties. Elles ont été entrées par les membres sans garantie d'exactitude.