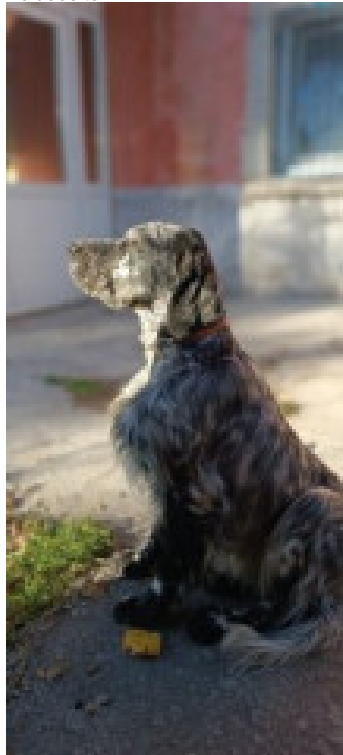


ARYA

2022-11-19 (F) LOF 999999999
Couleur : Noi.PBl.Env (bluebelton)

Père
BACKHAM
2020-04-20 (M)
KIF-ES-1896
- bluebelton



ARTU 2017-01-01 (M)
KIF-GB-ES-1977 - bluebelton



COSMO Ilamada RIVO 2014-05-31
(M) LOI LO14116475 - tricolore



APOLLO dit APO
2011-03-01 (M) LOI
LO1153034 - tricolore



IRIS 2012-03-01 (F)
LOI LO1260342 -
lemon



TISSOT 2013-05-31 (M)
LOI LO1396775 (CH SPEC) -
lemon



LORY (F) 143753 -
lemon

ADASSA 2017-05-03 (F) KIF-ES-2299
- bluebelton



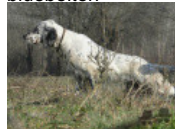
NOLE OD RACE 2015-05-15 (M) LOF
JR705762 - bluebelton



NOLO DEL ZAGNIS
2012-07-05 (M) LOI
LO12129055 (CH GQ, CH
IT, Camp. Ital. Lav. (CH T),
Camp. Ripr., CH(I)B) -
bluebelton

BETA OD POSTARA 2014-01-10 (F)
JR704860ES - liver

MONA 2015-05-03 (F) JR706314 -
bluebelton



DI-SI 2009-10-10 (M)
JR0326011 - tricolore

BODINIA 2001-11-19 (F) LOF
5646548 - bluebelton

Mère
ASIA
2014-03-19 (F)
JR704945ES
- bluebelton



TOR DEGLI UBERTI 2008-09-12 (M)
LOI LO08140923 (LO08140923) - Liver



RADENTIS MILANO 2004-05-15 (M)
LOI LO04104764 - bluebelton



RADENTIS NOMAR
1998-03-22 (M) LOI
LO98133353 ((CHGQ CHITF /
CHIT.B)) - liver

RADENTIS STELLA 2001-10-24 (F)
LOI LO0230668 - bluebelton

CALI' 2007-01-21 (F) LOI LO0773181
- bluebelton



RADENTIS ZUM
2002-07-08 (M) LOI
LO02161851 (Camp.
Tr. (Ch GQ), Camp. Int.
Lav., Camp. Ital. Lav.) -
lemon

SARA 2003-06-10 (F) LOI
LO03150166 - bluebelton

AREONORA 2012-05-22 (F)
JR704762 - tricolore



DODO DEL BINARIO (M) LOI
20090931 - tricolore



UFO DEL BINARIO
2008-03-28 (M) LOI
LO0951439 (Camp. Ital.
Lav.) - tricolore

DUNA 2004-03-26 (F) LOI
LO04108577 - liver tricolore

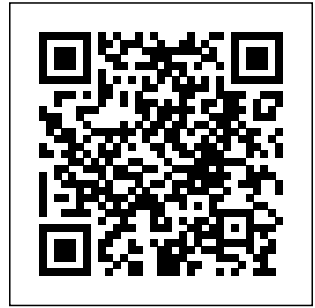
ARTA 2009-01-20 (F) JR702511 -
tricolore



BECKHAM
2002-06-16
(M) LOI
LO02143991
(Camp. Tr. (Ch GQ) Camp. Ital. Lav. Camp. Int.
Lav.) - tricolore

CHITA (F) JR701647ES

Propriétaire : Ali ?encan
Sang italien (estimation) : 100 %



Note : les données ne sont pas garanties. Elles ont été entrées par les membres sans garantie d'exactitude.