










ADARMENDI NOVAK

2017-06-17 (M) LOE 2382533

Couleur : Noi.PBl.Env (bluebelton) / Dyspl. : A
[fiche affixe](#)

<p>Père</p> <p>ADARMENDI FALCO 2010-06-29 (M) LOE 1965434 (Trialer) - bluebelton</p> 	<p>WILD DE ARTETA (M) LOE 5019944</p>	<p>EUSKITZE AS 2001-09-28 (M) LOE 1283965 (Ch IT GQ) - lemon</p> 	<p>RADENTIS D'ESPANA 1995-05-22 (M) LOE 990823 (Ch IT B, Ch GQ) - lemon</p> 	
	<p>ADARMENDI WANIA (F) LOE 1533922</p>	<p>LARA DE CASA EIREXA 1999-02-12 (F) LOE 1556950 - lemon</p>	<p>TITO 1998-06-08 (M) LOE 1109111 (TrGB(E.02)) - lemon</p> 	<p>NESKA 1997-09-02 (F) LOE 873632 (Ch IT) - tricolore</p> 
<p>Mère</p> <p>ADARMENDI DIVA 2008-09-09 (F) LOE 1820986 - bluebelton</p>	<p>PALAZIENSIS RAMBO 1999-11-01 (M) LOI LO0060896 (Ch W0F/ICH, IT T, ITF, Camp. Tr. (Ch GQ), CH(ES)T, CH(GB)T) - lemon</p> 	<p>ADARMENDI RAS (F) LOE 1200113</p>	<p>RADENTIS D'ESPANA 1995-05-22 (M) LOE 990823 (Ch IT B, Ch GQ) - lemon</p> 	
	<p>ADARMENDI RAS (F) LOE 1200113</p>	<p>ADARMENDI RAS (F) LOE 1200113</p>	<p>BRUNA 1994-01-08 (F) LOI ST493276 - bluebelton</p>	<p>GUERCIÑO DELLA FRATTONA 1996-05-07 (M) LOI ST554737 - bluebelton</p>
	<p>ADARMENDI RAS (F) LOE 1200113</p>	<p>ADARMENDI RAS (F) LOE 1200113</p>	<p>ERIK 1995-09-23 (M) LOI ST534044 (Ch. Ital. Lav., Ch. Int. Lav.) - bluebelton</p>	<p>ARNO 1988-04-17 (M) LOI ST374735 (Ch. Int. Lav., Camp. Ripr., Ch. Ital. Lav.) - lemon</p> 
	<p>ADARMENDI RAS (F) LOE 1200113</p>	<p>ADARMENDI RAS (F) LOE 1200113</p>	<p>LADY 1994-04-30 (F) LOI ST499069 (Ch A) - bluebelton</p>	<p>ERIK 1995-09-23 (M) LOI ST534044 (Ch. Ital. Lav., Ch. Int. Lav.) - bluebelton</p>
	<p>ADARMENDI RAS (F) LOE 1200113</p>	<p>ADARMENDI RAS (F) LOE 1200113</p>	<p>LOLA 1988-05-03 (F) LOI ST366110 - bluebelton</p>	
	<p>ADARMENDI RAS (F) LOE 1200113</p>	<p>ADARMENDI RAS (F) LOE 1200113</p>	<p>BRICK 1991-03-30 (M) LOI ST440090 (Camp. Ripr., Ch. Ital. Lav., Ch. Int. Lav.) - lemon</p> 	
	<p>ADARMENDI RAS (F) LOE 1200113</p>	<p>ADARMENDI RAS (F) LOE 1200113</p>	<p>BERNA 1990-07-10 (F) LOI ST426108 - bluebelton</p>	
	<p>ADARMENDI RAS (F) LOE 1200113</p>	<p>ADARMENDI RAS (F) LOE 1200113</p>	<p>LASTER 2022-07-09 (M) LOE 282362 - bluebelton</p>	
	<p>ADARMENDI RAS (F) LOE 1200113</p>	<p>ADARMENDI RAS (F) LOE 1200113</p>	<p>ADARMENDI SIRA (F) LOE 388619</p>	

[[Lien...](#)] / Eleveur : SETTER-ADARMENDI / Propriétaire : VITOR SILVA (SETTER DA PEDRA MUA) (pedramua@hotmail.com)

Puce : 941000021757736

Sang italien (estimation) : 74 %

Estimation des points au pédigrée : 18

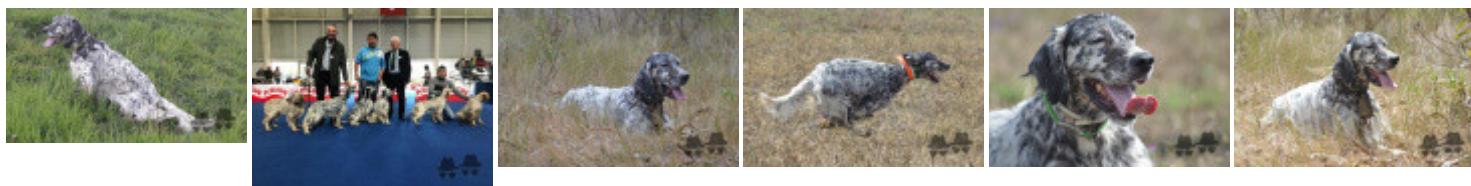
Taux de consanguinité (estimation) : 7.4 %

ADARMENDI RAS (3 X 2) : 0.062500
DECOR LOT (6,6,7,8,8,8,8,8,8,8,8 X 5,7,7,7,8,8,8) : 0.007629
RADENTIS GIAN (6,7,7,7,7,8 X 6,7) : 0.002197
DUN DEL MESHIO (7,8,8,8,8 X 7,8,8,8,8) : 0.000854
ORFEO DELLA TRAPPOLA (7 X 7,8) : 0.000183
GIP DELLA BASSANA (8 X 6) : 0.000122
OLAF DEL TRE PONTI (8,8 X 7) : 0.000061
RENA DI VERONELLO (7 X 8) : 0.000061
CRISMANI OLAF (8 X 8,8) : 0.000031
LEM DEL RESEGONE (8 X 8) : 0.000031



Résultats expositions

Lieu	Date	Classe	Juge	Qualif. Pts
ES	2019-05-19	CIM		2 EXC 9
40 EXPOSICION INTERNACIONAL CANINA DE GIPUZKOA				
Total des points				9



Note : les données ne sont pas garanties. Elles ont été entrées par les membres sans garantie d'exactitude.