

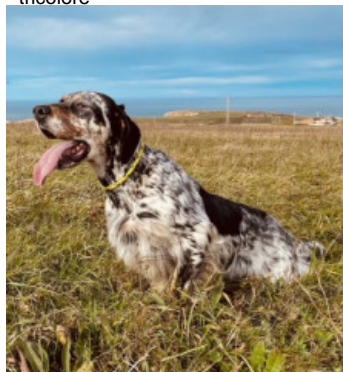
AFRICA DO VAL DO ULLA

2023-10-03 (F) LOE
Couleur : Blanco y negro (bluebelton)
[fiche affixe](#)



hosted by setter-anglais.fr

Père
DETROIT DEL SELMIK
2021-02-06 (M)
LOE 2568946
(FINALISTA JOVENES PROMESAS 2022)
- tricolore

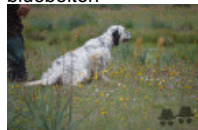


BOSTON DEL SELMIK 2017-08-25
(M) LOE 2395431 (CH GQ) - tricolore

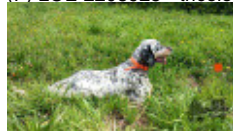


LEIOANDI DONA (F) LOE - lemon

MARC DEL FAENOR NI 2012-10-01
(M) LOE 2141505 (CH IT GQ) -
bluebelton



QUEMA DE LA ARMUÑA 2014-04-20
(F) LOE 2208925 - tricolore



NOLO DEL ZAGNIS 2012-07-05 (M)
LOI LO12129055 (CH GQ, CH IT, Camp.
Ital. Lav. (CH T), Camp. Ripr., CH(I)B) -
bluebelton



LEIOANDI NEONI 2018-05-26 (F)
LOE 2426818 - bluebelton



MARK 2011-06-14 (M) LOI
LO11112072 (Tr GQ) - bluebelton



SIMBA DEL FAENOR NI
dite **TACA** 2008-10-29 (F)
LOE 1865076 (Tr becasas) -
MARRÓN/BLANCO



KIKO DE LA ARMUÑA
2005-06-01 (M) LOE
1533032 (Ch GQ, CH IT,
CH(ES)T) - lemon

DUNA DEL FAENOR NI dit **TRUFA**
2008-08-21 (F) LOE 1787162 - lemon




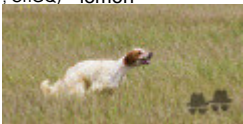


GIAR D'ALERIA
2008-11-15 (M) LOI
LO09120198 (Camp.
Soc., Ch. Ita. Lav.) - lemon

ALCE DEL ZAGNIS 2009-10-27 (F)
LOI LO1054031 - lemon



NAOMO 2012-10-03 (M) LOI
LO12157965 (Ch. Ital. Lav., CH GQ)
- bluebelton

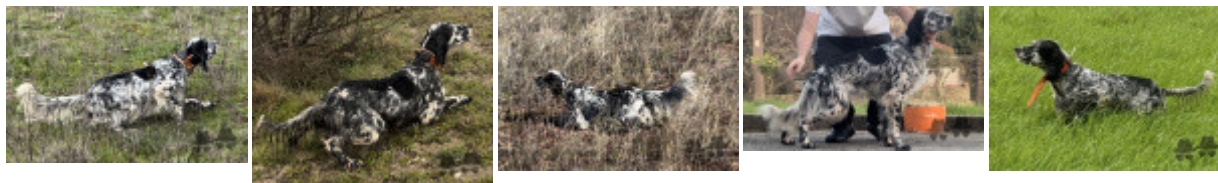
MARZALE'S GERARDINA
2011-05-15 (F) LOI LO11106592 -
liver

<p>Mère <u>TRIANA DE LA SOLARIEGA</u> 2017-11-06 (F) LOE 2386076 - bluebelton</p> 	<p><u>ELFO DE L'EL BALDIO</u> 2012-05-26 (M) LOP 553549 (TrGQ (E.17) ; TrPC ; TrPr ; ChGQ) - lemon</p> 	<p><u>CANTARES DE L'EL BALDIO</u> (M) LOE 1886421 (CH(E)GQ, TrGB(E.11), CHIT) - lemon</p> 	<p><u>PAIPER</u> 2005-01-10 (M) LOI LO0580213 (Ch. Ital. Lav., CH GQ, Ch. Int. Lav.) - bluebelton</p>
<p><u>PAT DE LA SOLARIEGA</u> 2014-11-18 (F) LOE 2221155 - bluebelton</p>		<p><u>ADRA DE L'EL BALDIO</u> (F) LOE 1771015 (TrGQ)</p>	<p><u>VENTISCA DE L'EL BALDIO</u> 2004-04-30 (F) LOE 1448995 - lemon</p> <p><u>VOLCAN DE L'EL BALDIO</u> (M) LOE 1449000 (TrGB(E.08))</p>
		<p><u>NOTADO DELLA VECCHIA IRLANDA</u> (M) LOE 2268638 (CH IT GQ, CH(I)GQ (Camp. Trial.)) - liver</p> 	<p><u>ROSY</u> (F) LOE 1245110</p> <p><u>RADENTIS NOMAR</u> 1998-03-22 (M) LOI LO98133353 ((CHGQ CHITF / CHIT.B)) - liver</p>
		<p><u>ONA DE LA SOLARIEGA</u> (F) LOE 2137775 - bluebelton</p>	<p><u>GIBELTARIK BLONDIE</u> 2000-12-11 (F) LOI LO02122551 (CHIT.T) - lemon</p> <p><u>PICASSO</u> 2007-07-02 (M) LOI LO0864657 (Camp. Soc., CH GQ, Camp. Ripr., Ch. Int. Lav.) - bluebelton</p> <p><u>URIA DI VAL DI CHIANA</u> 2010-09-25 (F) LOE 2014411 - lemon</p>

Propriétaire : Bruno Barrio
Sang italien (estimation) : 97 %
Estimation des points au pédigrée : 26

Taux de consanguinité (estimation) : 2.7 %

KAPO' (5,5 X 5,5) : 0.007812
RADENTIS D'ESPANA (6,6,7,8 X 5,5) : 0.006042
RADENTIS SBRANCO (7,7,7,7,8,8 X 5,6,6,6,7) : 0.004883
RADENTIS NOMAR (6 X 4,6) : 0.002747
RADENTIS BORG (8,8,8,8,8,8 X 6,6,7,7,7,7,8,8) : 0.001740
ADRIAS TIMOTY (7,8 X 5,6,6) : 0.001465
RADENTIS GIAN (8 X 6,7,7,7,7,8,8,8,8,8,8) : 0.000580
NERO (6,6,8 X 6,6,8) : 0.000519
TODAY (6 X 6) : 0.000488
FRANCINI'S LUCA (7,8 X 7,7,8) : 0.000458
NEGUS (8,8,8,8 X 8,8,8) : 0.000244
PALAZIENSIS PEPE (7,7,8,8 X 7) : 0.000244
JUMA (7 X 7) : 0.000122
OLAE (7,8 X 8) : 0.000061
ILIO CAMP (8 X 7,8) : 0.000061



Note : les données ne sont pas garanties. Elles ont été entrées par les membres sans garantie d'exactitude.