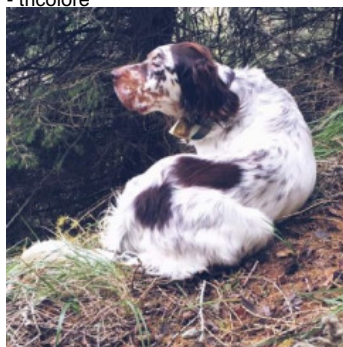


SVAROG

(M) LOI LO22142282

Couleur : bianco nero marrone (tricolore)

Père
NICCOLO' DELLE VETTE CAMUNE
 2017-02-02 (M)
 LOI LO1759116
 - tricolore



ZAC DI CROCEDOMINI 2003-10-15
 (M) LO0428472 - tricolore



VERA DI CROCEDOMINI 2011-04-13
 (F) LOI LO1185316 - liver



GIM 1999-03-02 (M) LOI LO99110712
 - bluebelton

CHITA 2000-05-23 (F) LOI
 LO00103951 - bluebelton



GION DI CROCEDOMINI 2008-01-06
 (M) LOI LO08103087 (Camp. Ripr. (CH)) -
 lemon



ALICE DI CROCEDOMINI 2004-03-05
 (F) LOI LO04122672 - tricolore



BUCK 1993-03-01 (M) LOI ST479092
 - bluebelton

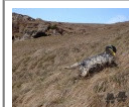
BETSY 1995-04-19 (F) LOI ST516987
 - bluebelton



GIAN DI CROCEDOMINI
 1994-10-20 (M) LOI
 ST514104 -
 bluebelton

KIRA 1998-01-03 (F) LOI
 LO98106650 - tricolore

GIBELTARIK FLEMMING 2003-08-23
 (M) LOI LO0790204 - lemon



EVA DI CROCEDOMINI
 2004-05-01 (F) LOI
 LO04101913 (Camp. Ital.
 Lav.) - bianco nera

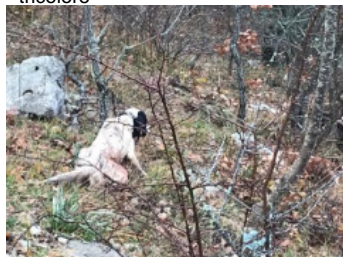


CASTER
 1996-01-10 (M) LOI
 ST535935 (Camp.
 Ripr.) - tricolore



BIBA DI CROCEDOMINI
 1997-01-10 (F) LOI
 ST557013 - tricolore

Mère
ESTER dite SHIVA
 2015-04-16 (F)
 LOI LO1587132
 - tricolore



ALI 2007-02-26 (M) LOI LO0825615 -
 tricolore



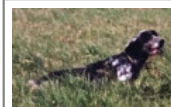
AMBRA 2012-05-12 (F) LOI
 LO1288273 - tricolore

NERO 2000-07-11 (M) LOI
 LO0137605 - bluebelton

SOPHIE DEL FABIOMASSIMO
 2003-03-24 (F) LOI LO0359790 -
 tricolore

ATHOS 1997-04-30 (M) LOI
 LO985162 - lemon

LUNA 1994-09-06 (F) LOI ST510631 -
 bluebelton



ULISSE DEL FABIOMASSIMO
 1994-12-09 (M)
 LOI ST516763 (Ch.
 Ital. Lav.) -

LOGAN DEL FABIOMASSIMO
 2002-04-15 (F) LOI LO0276757 -
 bluebelton

NERO 2000-07-11 (M) LOI
 LO0137605 - bluebelton

SOPHIE DEL FABIOMASSIMO
 2003-03-24 (F) LOI LO0359790 -
 tricolore

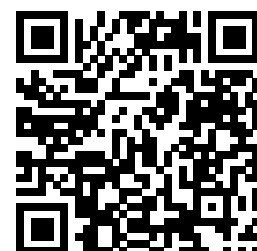
ARTU' 2007-02-26 (M) LOI
 LO0825616 - liver

UMBRA DEL GIANTANO 2006-11-05
 (F) LOI LO0758557 - LIVER BELTON
 MACCHIA OCCHIO SX O

PUSKAS DEL GIANTANO
 2000-07-17 (M) LOI LO0141717 -
 bluebelton

RULA DEL GIANTANO 2002-04-26
 (F) LOI LO02107760 - lemon

Eleveur : NOCE CHRISTIAN
 Puce : 380260004606503
 Estimation des points au pédigrée : 2



Note : les données ne sont pas garanties. Elles ont été entrées par les membres sans garantie d'exactitude.

