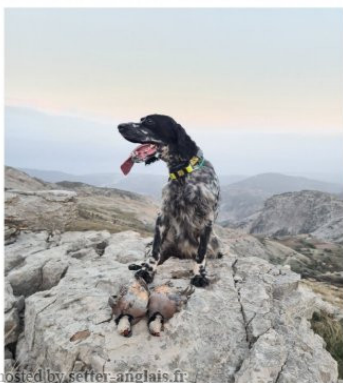


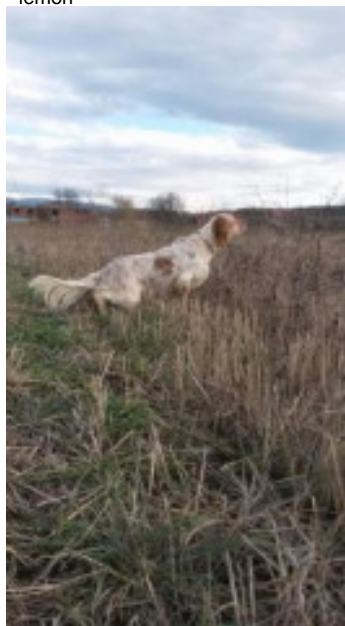
**LEONE named LEO**

2018-07-26 (M) JR708342ES  
Couleur : Bluebelton / Dyspl. : accept



hosted by setter-anglais.fr

Père  
**GANDINO DEL ZAGNIS**  
2016-04-11 (M)  
LOI LO1683584  
- lemon



**GANDI ZAGNI DEL DUDA**  
2014-05-11 (M) JR705563 - lemon



**NOSFERATUS DI VAL DI CHIANA**  
2007-07-10 (M) LOI LO0867580  
(Camp. Soc., CH GQ) - bluebelton



**ZARA RAJKAL** 2011-08-29 (F)  
JR704257ES - lemon

**KAPO'** 2003-11-10  
(M) LOI LO0439835  
(Ch IT GQ) - bluebelton



**KEDI** 2003-08-10 (F) LOI LO0411752  
- bluebelton



**RADENTIS ZERO**  
2002-07-08  
(M) LOI  
LO02161853 -  
lemon

**EVA RAJKAL** (F) BEK JR702978ES

**HECTORE DEL ZAGNIS** 2006-12-21  
(M) LOI LO0818749 (Ch. Ital. Lav., CH  
GQ) - bluebelton



**DINA DEL ZAGNIS** 2013-10-05 (F)  
LOI LO13156866 - bluebelton

**LORD DEL ZAGNIS**  
2002-09-30 (M) LOI  
LO02167262 (Ch. Ital. Lav.,  
CH GQ, Ch. Int. Lav.) -  
lemon



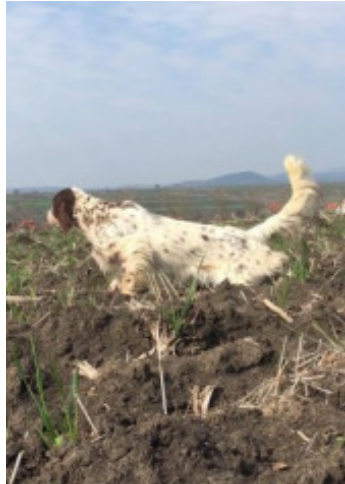
**LIA DEL ZAGNIS** 2001-09-22 (F) LOI  
LO0228217 - bluebelton

**ALVIS DINO** 1999-02-19 (M) LOI  
LO99122104 (Ch. Ital. Lav.) - bluebelton

**ELEN** 2006-01-15 (F) LOI  
LO06106801 - bluebelton

**LOLA** 2002-05-15 (F) LOI  
LO02113356 - tricolore

Mère  
**NOLA OD RACE**  
2015-05-15 (F)  
JR705761ES  
- liver



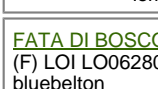
**NOLO DEL ZAGNIS** 2012-07-05 (M)  
LOI LO12129055 (CH GQ, CH IT, Camp.  
Ital. Lav. (CH T), Camp. Ripr., CH(I)B) -  
bluebelton



**GIAR D'ALERIA** 2008-11-15 (M) LOI  
LO09120198 (Camp. Soc., Ch. Ita. Lav.) -  
lemon



**LORD DEL ZAGNIS**  
2002-09-30 (M) LOI  
LO02167262 (Ch. Ital. Lav.,  
CH GQ, Ch. Int. Lav.) -  
lemon



**FATA DI BOSCOBANCO** 2005-08-04  
(F) LOI LO0628070 (Ch. Ital. Lav.) -  
bluebelton

**ALICE DEL ZAGNIS** 2009-10-27 (F)  
LOI LO1054031 - lemon

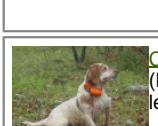
**ZAC DEL ZAGNIS** 2004-02-08 (M)  
LOI LO04103934 - bluebelton

**MIMI' DEL ZAGNIS** 2004-02-08 (F)  
LOI LO04103900 - tricolore

**ROONEY DEL SARGIADAE**  
2004-06-11 (M) LOI LO04120540 (Ch  
GQ, Camp. Ital. Assol., Camp. Ital. Lav., Camp.  
Int. Lav.) - bluebelton



**BIG JIM** 2000-12-01  
(M) LOI LO0188207  
(CH GQ, Ch. Int. Lav.,  
Camp. Ripr., Ch. Ital. Lav.)  
- liver



**CASSIA** 2002-03-19  
(F) LOI LO02125347 -  
lemon

**DESIANENSIS PATTY** 2010-05-30  
(F) JR704856ES

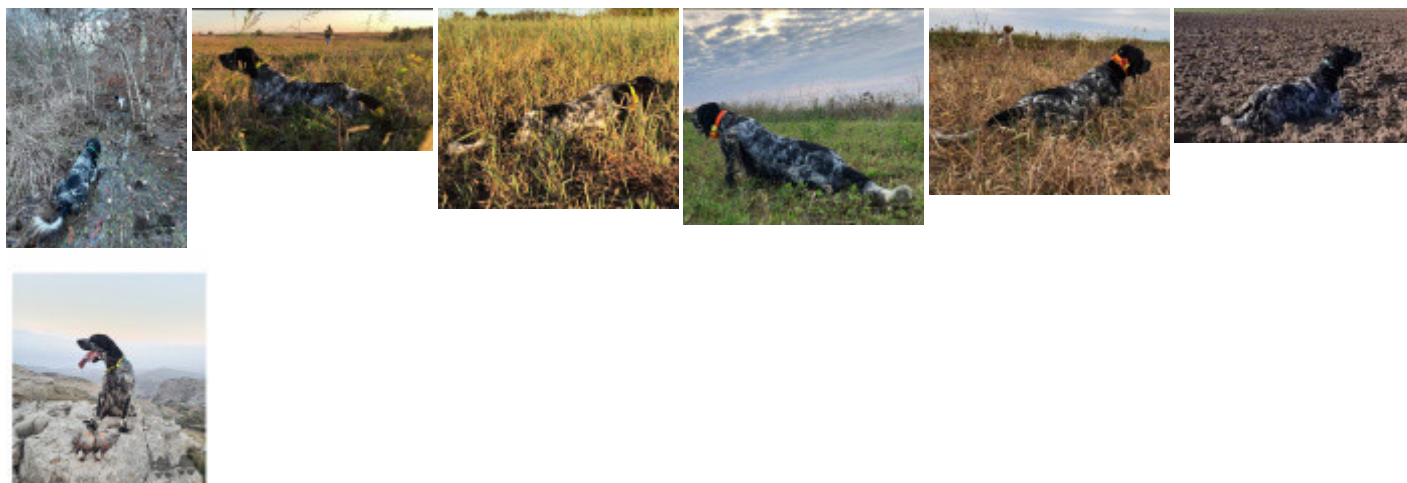
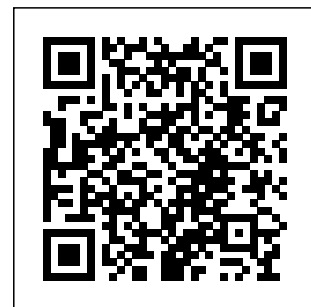
**DESIANENSIS ISAC** 2008-09-04 (M)  
LOI LO0996144 - bluebelton

**DESIANENSIS SONIA** 2003-04-15 (F)  
LOI LO03104160 (Ch.it Lav) - liver

Eleveur : VLADIMIR MARKOVIC / Propriétaire : ANDREAS ZAGLAS  
 Sang italien (estimation) : 100 %  
 Estimation des points au pédigrée : 17

## Taux de consanguinité (estimation) : 2.2 %

LORD DEL ZAGNIS (4 X 4) : 0.008301  
ASOR (6,6,7,7,8 X 6,7,7,7,8,8,8) : 0.003998  
FIERO (5 X 5) : 0.001953  
OLAE (5,8 X 6) : 0.001099  
ALVIS ZAMBIA (5 X 6) : 0.000977  
DECOR LOTI (7,7,8,8,8 X 8,8,8,8,8) : 0.000916  
ARNO (6 X 6,6,7) : 0.000732  
RADENTIS SBRANCO (7 X 6,7,7,7) : 0.000610  
RADENTIS GIAN (7,8 X 7,7,7,8) : 0.000519  
SIRIO DEL DIANELLA (6 X 6,7,7) : 0.000488  
SHELA (7,8 X 7,7,8,8) : 0.000427  
NEGUS (7,7,7 X 7) : 0.000366  
DEM (7,8,8 X 8,8) : 0.000183  
EMO DELLA TRAPPOLA (7,7,8,8 X 7,8,8,8,8) : 0.000183  
FLAY DEL DIANELLA (7,7,8,8 X 7,8,8,8,8) : 0.000183  
LEM DEL RESEGONE (8,8,8 X 8,8) : 0.000153  
FRANCINI'S LUCA (7,7 X 8) : 0.000122  
OLAF DEL TRE PONTI (8,8 X 8,8) : 0.000122  
CRISMANI ATOS (7 X 7,7,8,8,8) : 0.000122  
FRANCINI'S ASTON (7,8,8 X 8) : 0.000092  
AMBO DEL VARO (8,8 X 8) : 0.000061  
AMBRA DEL DIANELLA (8,8 X 8,8) : 0.000061  
FRANCINI'S ASTON 1 (8,8 X 8,8) : 0.000061  
NELSON DEL DIANELLA (7,8 X 8) : 0.000031  
DUN DEL MESCHIO (8 X 8) : 0.000031  
URSULA DEL PRATESI (8 X 8) : 0.000031  
CKITA DEL DIANELLA (7,8,8 X 8) : 0.000031  
RADENTIS BORG (8 X 7,8,8,8,8) : 0.000031



Note : les données ne sont pas garanties. Elles ont été entrées par les membres sans garantie d'exactitude.