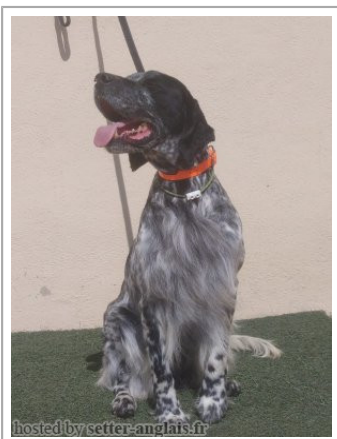


ROY

2018-08-01 (M) LOE 123000
Couleur : Blanco y negro (bluebelton)



EUSKITZE HAKINNEN 2008-05-12
(M) LOE 1816533 (TR.GB) - bluebelton



Père
DENDABERRI ROICE
2014-02-07 (M)
LOE
- liver



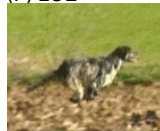
DENDABERRI KIKA 2008-11-15 (F)
LOE 1859451 (Tr Primavera. Tr Cp. Tr Gb.)
- liver



PALAZIENSIS RAMBO 1999-11-01
(M) LOI LO0060896 (Ch W0F/ICH, IT T,
ITF, Camp. Tr. (Ch GQ), CH(ES)T, CH(GB)T) -
lemon



EUSKITZE FIORENTINA 2006-06-19
(F) LOE



GIBELTARIK BORIS 2000-12-14 (M)
GKC02014 (Ch T GQ) - liver



DENDABERRI IRIU 2006-07-22 (F)
LOE 1662001 - lemon



PALAZIENSIS PEPE
1997-07-03 (M) LOI
LO99203608 - liver

LADY 1994-04-30 (F) LOI ST499069
(Ch A) - bluebelton



EUSKITZE RUGBY
2000-06-02 (M) LOE
1205440 - bluebelton



NESKA 1997-09-02 (F)
LOE 873632 (Ch IT) -
tricolore



**DODGE DEL
TIRSO** 1998-02-14
(M) LOI LO9942918
(Ch IT IT-T, CHIB,
Camp. Tr. (Ch GQ)) -
bluebelton









RADENTIS ERICA
1995-05-25 (F) LOI
ST531494 ((CH(I)B)) -
lemon



RADENTIS D'ESPANA
1995-05-22 (M) LOE
990823 (Ch IT B, Ch GQ)
- lemon

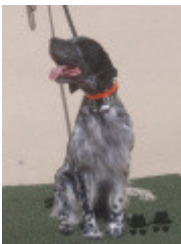
DENDABERRI GINA (F) LOE
1512376

<p>Mère</p> <p><u>DENDABERRI SULA</u> 2015-07-16 (F) LOE 2281099 - tricolore</p> 	<p><u>DENDABERRI JAI</u> 2007-03-12 (M) LOE 1704343 (TrCP, TrPR, TrBC) - bluebelton</p> 	<p><u>PALAZIENSIS RAMBO</u> 1999-11-01 (M) LOI LO0060896 (Ch W0F/CH, IT T, ITF, Camp. Tr. (Ch GQ), CH(ES)T, CH(GB)T) - lemon</p> 	<p><u>PALAZIENSIS PEPE</u> 1997-07-03 (M) LOI LO99203608 - liver</p> 
	<p><u>LUISA</u> 2007-04-15 (F) LOE 1790134 - bluebelton</p>	<p><u>UMBLANA DEL CAVALDROSSA</u> 2000-06-01 (F) LOI LO0336882 - bluebelton</p> 	<p><u>LADY</u> 1994-04-30 (F) LOI ST499069 (Ch A) - bluebelton</p>
		<p><u>ADIR DE NULPER</u> (M) LOE 1409671</p>	<p><u>QUARTA DEL CAVALDROSSA</u> (F) SHSB529576</p>
		<p><u>DUES</u> (F) LOE 1324647</p>	<p><u>SALKO DE BAYARA</u> (M) LOE 1235248</p> 
			<p><u>LUCI DE NULPER</u> (F) LOE 1259763</p>
			<p><u>NITO DE S'OSTALOT</u> (M) LOE 1087540</p>
			<p><u>LARA DE ARGILLO</u> (F) LOE 1143351</p>

Sang italien (estimation) : 80 %
Estimation des points au pédigrée : 15

Taux de consanguinité (estimation) : 4.4 %

PALAZIENSIS RAMBO (3,5 X 3) : 0.039062
DECOR LOT (7,7,7,7,8,8,8,8,8,8,8,8,8,8,8,8 X 8,8,8) : 0.001587
RADENTIS GIAN (7,7,7,7,7,7,8 X 7) : 0.000793
ROVAL MOZART (6,6,7,8 X 7,8) : 0.000732
LIY OD BENCICA (6,8 X 6) : 0.000610
DITO DEL CAVALDROSSA (7 X 6) : 0.000244
GIP DELLA BASSANA (7,8 X 7,8) : 0.000122
CALIGOLA DELLE OROBICHE (8 X 6,8) : 0.000122
DUN DEL MESCHIO (8 X 8,8,8) : 0.000092
FALCO (8 X 7,8) : 0.000092
ALMER (7 X 8) : 0.000061
OLAF DEI TRE PONTI (8,8,8 X 8) : 0.000061
ORFEO DELLA TRAPPOLA (7,8 X 8) : 0.000061
ATOS DELLE TORRICELLE (7,8 X 8) : 0.000061
SWING DELLA VECCHIA IRLANDA (8 X 8) : 0.000031
LEM DEL RESEGONE (8 X 8) : 0.000031



Note : les données ne sont pas garanties. Elles ont été entrées par les membres sans garantie d'exactitude.

