

MIUCCIA DEL POGGIO MARINO

(F) LOI LO21212889

Couleur : nero e bianco (bluebelton)

[fiche affixe](#)

ORIOLENSIS QUOD 2016-12-28 (M)
LOI LO1743008 (CH(I)T, CH GQ) - lemon



INO 2012-07-13 (M) LOI LO12122070
(Ch. Ital. Lav.) - bluebelton



MITO 2006-03-03 (M) LOI LO0678098
- bluebelton

KIRA 2010-04-16 (F) LOI
LO10111067 (Ch. Ital. Lav.) - bluebelton

CUCCA'S OBLADI 2010-09-30 (F)
LOI LO10171820 (Ch. Ital. Lav.) -
bluebelton



ORIO 2002-05-14
(M) LOI
LO02116390
(Camp. Tr. (Ch GQ)) -
bluebelton



CUCCA'S SAXA 2007-01-06 (F)
LOI LO0754389 (Camp. Ripr.) -
lemon



Père
CUCCA'S MOSER
2018-07-04 (M)
LOI LO18119945
- lemon



CUCCA'S RAYBAN 2006-07-04 (M)
LOI LO0740771 (Camp. Ital. Lav., Camp.
Tr. (CH GQ)) - liver



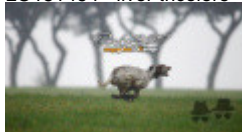
**DODGE DEL
TIRSO** 1998-02-14
(M) LOI LO9942918
(Ch IT IT-T, CHIB,
Camp. Tr. (Ch GQ)) -
bluebelton



CUCCA'S ESTER
2004-05-01 (F) LOI
LO0477644 - liver



CUCCA'S YTALIA 2014-12-24 (F) LOI
LO151464 - liver tricolore











CUCCA'S OBLADA' 2010-09-30 (F)
LOI LO10171827 - lemon

ORIO 2002-05-14
(M) LOI
LO02116390
(Camp. Tr. (Ch GQ)) -
bluebelton



CUCCA'S SAXA 2007-01-06 (F)
LOI LO0754389 (Camp. Ripr.) -
lemon



<p>Mère <u>BISCA DEL POGGIO MARINO</u> 2019-09-23 (F) LOI LO19208274 - bluebelton</p>	<p><u>AXEL</u> 2009-06-11 (M) LOI LO1085298 - tricolore</p> 	<p><u>ARTU DI ALDO DA SARNO</u> 2006-01-02 (M) LOI LO0666968 (Ch Italiano Trialler Int Ripr) - tricolore</p> 	<p><u>RAIANO DIOR</u> 2001-01-19 (M) LOI LO0187664 - liver</p> 	
	<p><u>AMY</u> 2002-08-10 (F) LOI LO02143515 - tricolore</p>	<p><u>FRANCINI'S JODY</u> 1994-03-06 (M) LOI ST501613 (Ch. Ital. Lav., Ch. Int. Lav.) - bluebelton</p> 	<p><u>ETNA DI ALDO DA SARNO</u> 2000-09-22 (F) LOI LO0163732 - tricolore</p>	<p><u>MIRA DI GRUMA</u> 2000-06-02 (F) LOI LO0130138 - bluebelton</p>
	<p><u>NELLY</u> 2012-10-03 (F) LOI LO12157964 - liver tricolore</p>	<p><u>KAPO'</u> 2003-11-10 (M) LOI LO0439835 (CH GQ, CH IT) - bluebelton</p> 	<p><u>NERO</u> 1997-03-29 (M) LOI LO9817889 (Ch T, Ch GQ) - bluebelton</p> 	<p><u>KYBA</u> 1998-01-01 (F) LOI LO98118951 - lemon</p>
	<p><u>QUATTA</u> 2009-06-11 (F) LOI LO1085288 - tricolore</p> 	<p><u>ARTU DI ALDO DA SARNO</u> 2006-01-02 (M) LOI LO0666968 (Ch Italiano Trialler Int Ripr) - tricolore</p> 	<p><u>AMY</u> 2002-08-10 (F) LOI LO02143515 - tricolore</p>	

Estimation des points au pédigrée : 18

Taux de consanguinité (estimation) : 1.2 %

PALAZIENSIS PEPE (6,6,6 X 5,5,6,6) : 0.008789
FRANCINI'S LUCA (8,8,8 X 5,6) : 0.001099
DECOR LOT (7,7,7,8 X 7,8,8) : 0.000854
NEGUS (7,7 X 6) : 0.000488
ROVAL MOZART (6,8,8,8 X 8,8) : 0.000427
RALF DEL DIANELLA (8 X 6,8,8) : 0.000183
OLAF DEL TRE PONTI (8 X 7,7,8) : 0.000153
LILI DEI SANTI (8,8 X 8) : 0.000061
CALIGOLA DELLE OROBICHE (8,8 X 8) : 0.000061



Note : les données ne sont pas garanties. Elles ont été entrées par les membres sans garantie d'exactitude.