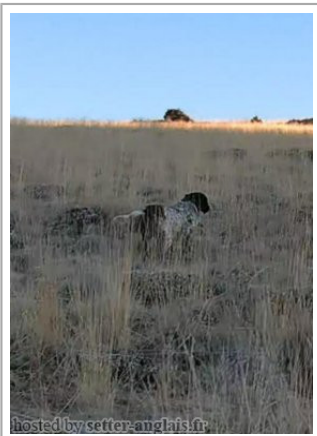
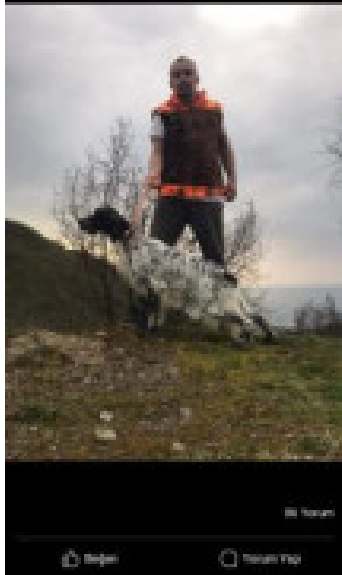


**TRB ESCOBAR**

2024-01-06 (M) KIF-ES7759  
Couleur : Noi.PBl.Env (bluebelton)



Père  
**TRB SAGAS**  
2019-12-31 (M)  
KIF-ES-3820  
- bluebelton



**BEN DEL DUDA** 2014-12-03 (M)  
705874 - liver



**TRABZON ARIA** (F) 151661



**BENTLEY** 2012-01-04 (M) JR704608



**GAGA DEL DUDA** 2012-12-15 (F)  
704690

**GISTREDO MAIKEL dit DIDO**  
2012-12-21 (M) LOE 2110281 -  
bluebelton



**GISTREDO HISPANIA** 2011-05-08 (F)  
LOE 2073564 (Ch) - Liver



**MET** 2003-01-15 (M)  
LOI LO0345160 (CH  
GQ) - bluebelton

**ILIA** (F) JR76487



**PICASSO** 2007-07-02  
(M) LOI LO0864657  
(Camp. Soc., CH GQ, Camp.  
Ripr., Ch. Int. Lav.) -  
bluebelton

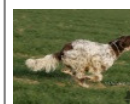
**FIONAMEL** (F) JR704062



**RADENTIS COBRA**  
2000-06-30 (M) LOI  
LO0128791 (Camp. Tr.  
(Ch GQ)) - lemon













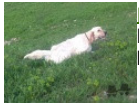


**GISTREDO FUSCA**  
2007-06-30 (F) LOE  
1732330 - liver



**BIG JIM** 2000-12-01  
(M) LOI LO0188207  
(CH GQ, Ch. Int. Lav.,  
Camp. Ripr., Ch. Ital. Lav.)  
- liver



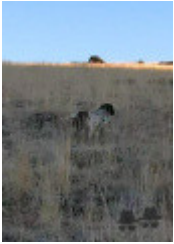
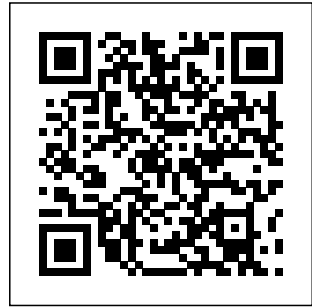
**SARA DE  
URTXUBIGANE dit  
INDIA** 2005-03-01 (F)  
LOE 1519311 (P.A.N.)  
- liver

<p>Mère <u>TRB T?NA</u> 2020-05-23 (F) KIF-ES-4154 - bluebelton</p>	<p><u>GISTREDO MAIKEL dit DIDO</u> 2012-12-21 (M) LOE 2110281 - bluebelton</p> 	<p><u>RADENTIS COBRA</u> 2000-06-30 (M) LOI LO0128791 (Camp. Tr. (Ch GQ)) - lemon</p> 	<p><u>LERRY</u> 1997-02-14 (M) LOI ST555862 (Ch GQ, Ch IT) - bluebelton</p> 	
		<p><u>GISTREDO FUSCA</u> 2007-06-30 (F) LOE 1732330 - liver</p> 	<p><u>GIBELTARIK BORIS</u> 2000-12-14 (M) GKC02014 (Ch T GQ) - liver</p> 	<p><u>RADENTIS BELLA</u> 1997-01-13 (F) LOI ST559827 (IT Ch GQ) - lemon</p> 
		<p><u>COSMO llamada RIVO</u> 2014-05-31 (M) LOI LO14116475 - tricolore</p> 	<p><u>SARA DE URTXUBIGANE dit INDIA</u> 2005-03-01 (F) LOE 1519311 (P.A.N.) - liver</p> 	<p><u>APOLLO dit APO</u> 2011-03-01 (M) LOI LO1153034 - tricolore</p> 
	<p><u>TRABZON HILLS</u> 2016-05-23 (F) KIF-ES-1263</p>		<p><u>GISTREDO HISPANIA</u> 2011-05-08 (F) LOE 2073564 (Ch) - Liver</p> 	<p><u>IRIS</u> 2012-03-01 (F) LOI LO1260342 - lemon</p> 
		<p><u>BIG JIM</u> 2000-12-01 (M) LOI LO0188207 (CH GQ, Ch. Int. Lav., Camp. Ripr., Ch. Ital. Lav.) - liver</p> 	<p><u>SARA DE URTXUBIGANE dit INDIA</u> 2005-03-01 (F) LOE 1519311 (P.A.N.) - liver</p> 	

Eleveur : MAHMUT YURDUSEVEN / Propriétaire : HAL?L GAYA (5547313054)  
Puce : 900115002324535  
Sang italien (estimation) : 94 %  
Estimation des points au pédigrée : 7

## Taux de consanguinité (estimation) : 13 %

GISTREDO MAIKEL dit DIDO (3 X 2) : 0.066162  
GISTREDO HISPANIA (3 X 3) : 0.032227  
SARA DE URTXUBIGANE dit INDIA (4,5 X 4,4) : 0.011719  
LERRY (5,5,7 X 4,5,7) : 0.007935  
RADENTIS SBRANCO (6,6,7,7,7,8,8,8 X 5,6,6,7,7,7) : 0.007202  
BIG JIM (4,6 X 4) : 0.002075  
ODE DEL SOLE (6,7,7,8 X 5,6,7,7) : 0.001099  
ARNO (6,6,7,8 X 5,6,7,8) : 0.000793  
RADENTIS BORG (7,7,8,8,8,8,8 X 6,7,7,8,8,8,8) : 0.000366  
ROYAL VIENNA (7,8 X 7,7,8,8) : 0.000305  
RADENTIS GIAN (8,8,8 X 7,7,8,8,8,8) : 0.000153  
AMBO DEL VARO (7,8,8,8 X 6,7,7,8,8) : 0.000092  
DITO DEL CAVALDROSSA (8 X 8) : 0.000031



Note : les données ne sont pas garanties. Elles ont été entrées par les membres sans garantie d'exactitude.