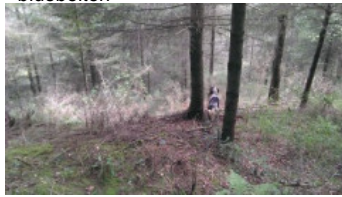


ILUN ATALDE

(M) LOE 2152596
Couleur : Blanco y negro (bluebelton)
[fiche affixe](#)

hosted by [setter-anglais.fr](#)

Père
FLACH DES COLLINES DE L'IZARS
2010-10-15 (M)
LOE 2085884
- bluebelton



BOY DES COLLINES DE L'IZARS
2006-03-23 (M) LOF 186771/30733
(TR, CH GQ) - tricolore



IALA DELLA VECCHIA IRLANDA
2004-07-10 (F) LOF 195724/36827 -
bluebelton



RAUL DE LA MUNIA 2000-08-15 (M)
LOF 157086/25614 (TR, CH A, CH P, CH
T) - lemon



RHEA DE CAZAOUS 2000-05-21 (F)
LOF 153948/28734 (TR, CH A) -
bluebelton



GIBELTARIK BORIS 2000-12-14 (M)
GKC02014 (Ch T GQ) - liver



FIAMMA 2001-07-16 (F) LOI
LO0217798 - lemon

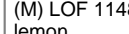
ZIBEL 1997-05-23 (M)
LOI LO9814304 (Ch IT Ch
IT B) - liver



**HAPPY DE LA
MUNIA** 1992-06-28
(F) LOF
115034/19917 (TR,
CH T) - tricolore



**HERM DE
L'OREE DU
BOIS
BECASSES**
1992-06-12
(M) LOF 114818/17865 (CH T, CH GQ) -
lemon



**LORADA DE L'ECHO
DE LA FORET**
1995-05-14 (F) LOF
127517/22592 (TR, CH
A, CH P) - tricolore



**DODGE DEL
TIRSO** 1998-02-14
(M) LOI LO9942918
(Ch IT IT-T, CHIB,
Camp. Tr. (Ch GQ)) -
bluebelton



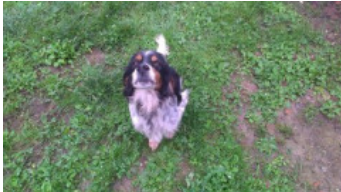






RADENTIS ERICA
1995-05-25 (F) LOI
ST531494 ((CH(I)B)) -
lemon



FIERO 1996-08-10
(M) LOI ST551356
(CHGQ, Ch ITF, Ch IB, Ch
ITT) - lemon



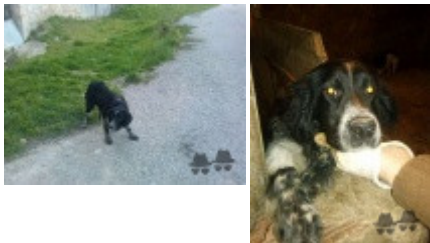
GINA 1999-06-25 (F) LOI
LO99191482 - bluebelton

<p>Mère</p> <p><u>LARA DE PIEDRALLADA dit TXIRTA</u> (F) LOE 1784446 - tricolore</p> 	<p><u>EUSKITZE ARNO</u> 2001-08-28 (M) LOE 1283964 - lemon</p> 	<p><u>RADENTIS D'ESPANA</u> 1995-05-22 (M) LOE 990823 (Ch IT B, Ch GQ) - lemon</p> 	<p><u>RADENTIS SBRANCO</u> 1991-07-01 (M) LOI ST448908 (CH IB, Ch. Int. Lav.) - lemon</p>
	<p><u>TALI</u> 2002-01-13 (F) LOI LO0275459 - tricolore</p> 	<p><u>NESKA</u> 1997-09-02 (F) LOE 873632 (Ch IT) - tricolore</p> 	<p><u>RADENTIS ALA</u> 1994-03-15 (F) LOI ST496649 (Ch T) - lemon</p>
	<p><u>NERO</u> 1997-03-29 (M) LOI LO9817889 (Ch T, Ch GQ) - bluebelton</p> 	<p><u>CINA DE GONZA LOSA</u> (F) LOE 640953 (Champion)</p>	<p><u>GUFO DI VAL DI CHIANA</u> 1994-04-01 (M) LOI ST514177 (Ch GQ) - bluebelton</p>
	<p><u>SHIFFER</u> 1996-07-13 (F) LOI ST547867 - bluebelton</p>	<p><u>KELLI</u> 1992-06-18 (F) LOI ST466220 - bluebelton</p> 	<p><u>FRANCINI'S ROCKY</u> 1989-02-25 (M) LOI ST409893 (Ch. Int. Lav., Ch. Ital. Lav.) - bluebelton</p>
		<p><u>FRANCINI'S BRIGITTE</u> 1994-03-01 (F) LOI ST501610 - tricolore</p>	

Sang italien (estimation) : 93 %
Estimation des points au pédigrée : 21

Taux de consanguinité (estimation) : 2.8 %

DECOR LOI (6,6,7,7,7,7,7,8,8,8,8,8,8,8 X 6,7,7,7,7,8,8) : 0.009705
RADENTIS SBRANCO (5,5 X 4) : 0.008301
RADENTIS GIAN (6,7,7,7,7 X 6,6,8,8) : 0.002686
RADENTIS BORG (6,6 X 5,5) : 0.001953
DUN DEL MESCHIO (7,8,8,8,8,8,8 X 7,8,8,8,8) : 0.001465
FRANCINI'S LUCA (6 X 5) : 0.000977
OLAF DEL TRE PONTI (8,8,8 X 6,7,7,8) : 0.000702
RADENTIS DIDO (7,7 X 6,7,7) : 0.000488
FRANCINI'S ODETTTE (7 X 5) : 0.000488
FRANCINI'S ASTON (7 X 5) : 0.000488
ALMER (6 X 6) : 0.000488
LEM DEL RESEGONE (8 X 7,7,8,8,8,8,8) : 0.000244
BAIRO (8,8,8 X 7,7) : 0.000122
LIU DI VERONELLO (6 X 8) : 0.000122
ROSETTE (8 X 6,7,8) : 0.000092
FRANCINI'S VANITY (8 X 7,7) : 0.000061



Note : les données ne sont pas garanties. Elles ont été entrées par les membres sans garantie d'exactitude.

