







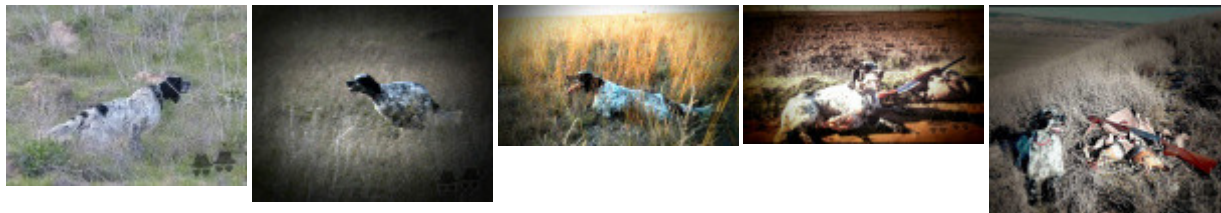
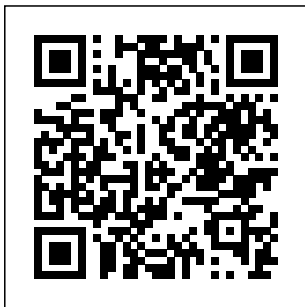
VENA

2012-07-31 (F) LOE 2111334
Couleur : Blanco y negro (bluebelton)



<p>Père TWIST 2001-05-10 (M) LOE 1902288 - bluebelton</p> 	<p>PIANIGIANI'S ARNO 1991-11-19 (M) LOI ST457334 (Ch Italie T, IT T, Reproducteur) - bluebelton</p> 	<p>FRANCINI'S BRICK 1987-02-21 (M) LOI ST354930 (Ch. Int. Lav.) - tricolore</p>	<p>DEM 1980-08-30 (M) LOI ST222808 (CH INT L RIP) - BIANCO-MACCHIA NERA OCCHIO DX-PI</p> 
<p>Mère DENDABERRI HIEDRA 2004-04-10 (F) LOE 1568682 - bluebelton</p> 	<p>PALAZIENSIS RAMBO 1999-11-01 (M) LOI LO0060896 (Ch W0F/ICH, IT T, ITF, Camp. Tr. (Ch GQ), CH(ES)T, CH(GB)T) - lemon</p> 	<p>PALAZIENSIS PEPE 1997-07-03 (M) LOI LO99203608 - liver</p> 	<p>GUERCINO DELLA FRATTONA 1996-05-07 (M) LOI ST554737 - bluebelton</p>
<p>GRETA DE BARBANZA llamada MEIGA (F) LOE 1320028 - tricolore</p>	<p>OSRAM DI TORRE MASINO 1992-01-27 (M) LOI ST456237 - bluebelton</p>	<p>inconnu</p>	<p>FRANCINI'S DENNI 1982-09-25 (F) LOI ST254442 - tricolore</p>
<p>AVA DELLE VALLATE 1983-06-16 (F) LOI ST276393 - bluebelton</p>	<p>ARGO 1991-05-21 (M) LOI ST449706 (Camp. Ripr.) - lemon</p>	<p>CHITA 1990-06-25 (F) LOI ST426151 - bluebelton</p>	<p>LORD DI VALLE MONTELORO 1988-05-10 (M) LOI ST374684 - bluebelton</p>
			<p>MADAMA DELLA TORRE ANTICA 1988-01-31 (F) LOI ST364236 - BIANCO PUNTEGGIATURE NERE PUNTA</p>
			<p>IRAK DELLADERCHI 1990-01-10 (M) LOI ST411384 - tricolore</p>
			<p>LOLA 1988-05-03 (F) LOI ST366110 - bluebelton</p>
			<p>LEMONT 1985-05-25 (M) LOI ST303508 (Ch Italie T, Ch IT T) - bluebelton</p>
			<p>MURA DI TORRE MASINO 1990-06-20 (F) LOI ST422852 - bluebelton</p>
			<p>inconnu</p>
			<p>inconnu</p>

Sang italien (estimation) : 87 %
Estimation des points au pédigrée : 18



Note : les données ne sont pas garanties. Elles ont été entrées par les membres sans garantie d'exactitude.