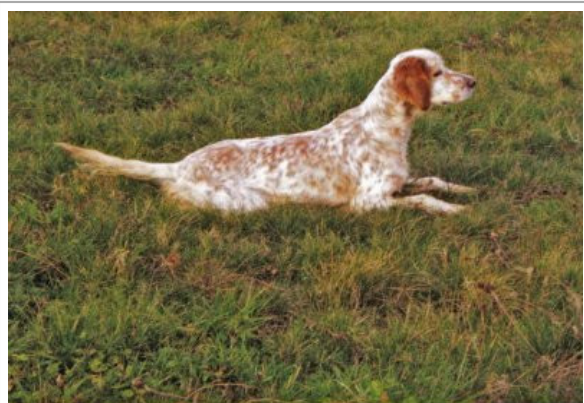








**NACA DE LOS DESMONTES**

1997-08-28 (F) LOE 869145  
 Titres : Tr CP, Tr PR, CHCp, CHIT  
[fiche affixe](#)



*Naca, madre de "Ria de Bosende"*

Père <a href="#">IHOR DE PLAYABARRI</a> (M) LOE 601128	<a href="#">FAY DE PLAYABARRI</a> 1990-03-06 (M) LOE 428385 (Ch GQ IT) - bluebelton 	<a href="#">AMOR DE PLAYABARRI</a> (M) LOE 377.431 	 <a href="#">FALCO</a> 1986-06-11 (M) LOI ST332567 (Ch T) - bluebelton	
		<a href="#">CORÁ DEL VALLE DE MENA</a> (F) LOE 361513	<a href="#">MILENA</a> 1986-04-16 (F) LOI 328222 - bluebelton	 <a href="#">FRANCINI'S ROCKY</a> 1989-02-25 (M) LOI ST409893 (Ch. Int. Lav., Ch. Ital. Lav.) - bluebelton
		<a href="#">KIP OD BENCICA</a> (M) JR42324 (Ch IB Ch IT) - bluebelton 	<a href="#">VINA PAGASARRI</a> 2020-04-19 (F) LOE 267918 - bluebelton	 <a href="#">GIP DELLA BASSANA</a> 1981-04-04 (M) LOI ST230524 (Ch IT, Camp. Ita. Lav., Ch B) - lemon
		<a href="#">LUBNA OD BENCICA</a> (F) LOE 522103	<a href="#">FATTA OD BENCICA</a> (F) JR42713ES (Ch T)	 <a href="#">OLAF DEI TRE PONTI</a> 1981-10-12 (M) LOI ST234864 (Ch L CHINT) - bluebelton
			<a href="#">DAMA OD BENCICA</a> (F) JR.41685 (Ch IB)	<a href="#">DAMA OD BENCICA</a> (F) LOI (Ch B)

Mère <u>LAIKA DE GOURIELLE</u> 1995-01-03 (F) LOE 820116 - bluebelton	<u>FLIN DEL VALLE DE MENA</u> 1991-09-28 (M) LOF 122559/17520 (TR) - bluebelton	<u>AMOR DE PLAYABARRI</u> (M) LOE 377.431 	<u>FALCO</u> 1986-06-11 (M) LOI ST332567 (Ch T) - bluebelton 
		<u>CARRIZIA DEL VALLE DE MENA</u> (F) LOE 361511 (CH L CHINT)	<u>MILENA</u> 1986-04-16 (F) LOI 328222 - bluebelton
		<u>FRANCINI'S LUCA</u> 1989-07-08 (M) LOI ST404483 (Ch. Ital. Lav., CH GQ, Ch. Int. Lav., Camp. Ripr.) - tricolore 	<u>FRANCINI'S ROCKY</u> 1984-10-26 (M) LOI ST301902 - lemon
	<u>IENA DE GOURIELLE</u> 1993-06-13 (F) LOF 119083/20852 - tricolore	<u>CLIO DE MALAUSE</u> 1987-09-08 (F) LOF 93321/15168 - lemon 	<u>VINA PAGASARRI</u> 2020-04-19 (F) LOE 267918 - bluebelton
		<u>FRANCINI'S LORI</u> 1980-07-21 (F) LOI ST219787 - BIANCO NERA PUNTEGGIATA 	<u>DEM</u> 1980-08-30 (M) LOI ST222808 (CH INT L RIP) - BIANCO-MACCHIA NERA OCCHIO DX-PI
			<u>BASSINO</u> 1985-01-06 (M) LOF 85287/10130 (CHQFC TR) - bluebelton 
			<u>AMAZONE DI BETTALE</u> 1984-10-26 (F) LOF 85986/12230 - bluebelton

Sang italien (estimation) : 100 %  
Estimation des points au pédigrée : 33

## Taux de consanguinité (estimation) : 5.8 %

AMOR DE PLAYABARRI (3 X 3) : 0.032349  
VINA PAGASARRI (4 X 4) : 0.008057  
DUN DEL MESCHIO (6,6,7 X 5,6,6,7,7,7) : 0.005127  
OLAF DEI TRE PONTI (4,6 X 5) : 0.004883  
LEM DEL RESEGONE (6,7,8 X 6,6) : 0.001099  
ARTU (6,8,8,8,8 X 7,7,8,8,8) : 0.001068  
ROSETTE (6 X 5) : 0.000977  
CRISMANI L OLAE (7,7,7,8 X 6,7,7,7,8,8,8) : 0.000732  
FRANCINI'S VANITY (7 X 5) : 0.000488  
LINDO 3 DI CEREAL (7,7,8,8 X 8,8) : 0.000336  
BRILL 2 DEL ROVERE (8,8,8,8,8 X 7,8,8,8) : 0.000305  
FRANCINI'S PEGGY (7,8 X 6,7) : 0.000305  
CRISMANI DIK (7,8 X 7,7,8) : 0.000275  
ASSIA DELLO ZORINO (6 X 6,7) : 0.000244  
MERA DELL'ORSONE (6,7 X 6) : 0.000244  
CRISMANI DUMBO (6,7 X 7) : 0.000244  
CRISMANI CARY (7,8,8 X 8,8,8) : 0.000214  
MÉA DELL'ORSONE (7,8 X 7,7) : 0.000183  
MISS 3 DELLE VALLATE (6,7,8 X 7,8,8) : 0.000153  
FELIX DI SAN MARZANO (7,8,8 X 8,8) : 0.000122  
SAIL (8,8 X 7,8,8) : 0.000122  
ALMAR DARMA (8,8 X 7,8,8,8) : 0.000061  
BOBET DI SAN FAUSTINO (8 X 8,8) : 0.000031  
ARNO II DI VAL D'IDICE (8 X 8,8,8) : 0.000031  
WAYGOOD TWIG (8 X 8,8) : 0.000031  
CRISMANI SLY (8,8 X 8,8,8) : 0.000031



Nona, madre de "Rita de Beaudou"



LAUREN MOULON, NACE DE L'ET DE MOULON

Note : les données ne sont pas garanties. Elles ont été entrées par les membres sans garantie d'exactitude.

