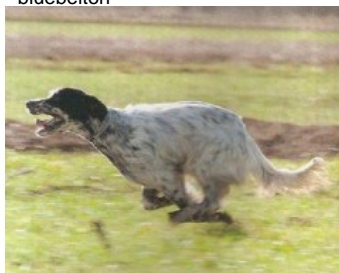


**OTO DE LA SOLARIEGA**

2013-04-14 (M) LOE 2137776  
 Couleur : Blanco Hígado  
[fiche affixe](#)



Père  
**PICASSO**  
 2007-07-02 (M)  
 LOI LO0864657  
 (Camp. Soc., CH GQ, Camp. Ripr., Ch. Int.  
 Lav.)  
 - bluebelton



**KAPO'** 2003-11-10 (M) LOI  
 LO0439835 (Ch IT GQ) - bluebelton



**ASIA** 2003-07-08 (F) LOI  
 LO03125315 - bluebelton



**NERO** 1997-03-29 (M) LOI  
 LO9817889 (Ch T, Ch GQ) - bluebelton



**KYBA** 1998-01-01 (F) LOI  
 LO98118951 - lemon



**ALA** 2001-04-30 (F) LOI LO01153556  
 - bluebelton

**GUFO DI VAL DI CHIANA**  
 1994-04-01 (M) LOI  
 ST514177 (Ch GQ) -  
 bluebelton



**KELLI** 1992-06-18 (F)  
 LOI ST466220 -  
 bluebelton



**VANGOGH DELL'AD MONTES**  
 1992-07-30 (M) LOI ST463291 (Camp.  
 Ripr.) - bluebelton

**SARA** 1989-04-30 (F) LOI ST395811 -  
 bluebelton

**RADENTIS  
 SBRANCO**  
 1991-07-01 (M) LOI  
 ST448908 (CH IB, Ch.  
 Int. Lav.) - lemon








**KELLI DELLA  
 MARIKA** 1995-08-06  
 (F) LOI ST530204 (Ch.  
 Ital. Lav.) - bluebelton



**FRANCINI'S JEFF**  
 1993-04-03 (M) LOI  
 ST479317 (Ch. Ital. Lav.,  
 Ch. Int. Lav., Camp. Ripr.) -  
 bluebelton



**MERY** 1999-05-29 (F) LOI  
 LO99173799 - bluebelton

<p>Mère <u>URIA DI VAL DI CHIANA</u> 2010-09-25 (F) LOE 2014411 - lemon</p>	<p><u>KAPO'</u> 2003-11-10 (M) LOI LO0439835 (Ch IT GQ) - bluebelton</p> 	<p><u>NERO</u> 1997-03-29 (M) LOI LO9817889 (Ch T, Ch GQ) - bluebelton</p> 	<p><u>GUFO DI VAL DI CHIANA</u> 1994-04-01 (M) LOI ST514177 (Ch GQ) - bluebelton</p> 
	<p><u>LEA</u> 2009-01-21 (F) LOI LO1011151 - lemon</p>	<p><u>KYBA</u> 1998-01-01 (F) LOI LO98118951 - lemon</p>	<p><u>VEGA</u> 2005-11-14 (M) LOI LO0669697 (Ch GQ) - lemon</p> 
		<p><u>TURBA</u> 2005-08-25 (F) LOI LO0626221 - tricolore</p>	<p><u>VANGOGH DELL'AD MONTES</u> 1992-07-30 (M) LOI ST463291 (Camp. Ripr.) - bluebelton</p>
			<p><u>SARA</u> 1989-04-30 (F) LOI ST395811 - bluebelton</p>
			<p><u>MARTIANISIUM LUTER</u> 2001-05-05 (M) LOI LO01138037 (Ch GQ (Camp. Tr.)) - bluebelton</p> 
			<p><u>MARTIANISIUM FRINA</u> 2002-01-22 (F) LOI LO0247253 (Camp. Ripr.) - bluebelton</p>
			<p><u>ENRY</u> 2002-02-24 (M) LOI LO0297391 - tricolore</p>
			<p><u>LAIKA</u> 1997-11-18 (F) LOI LO98108566 - bluebelton</p>

Propriétaire : Alfonso Garcia&Alfonso González (alfonsoreinadama@gmail.com)  
Sang italien (estimation) : 100 %  
Estimation des points au pédigrée : 35

## Taux de consanguinité (estimation) : 15.3 %

KAPO' (2 X 2) : 0.127197  
NERO (3 X 3,5,6) : 0.011765  
NEGUS (5,7 X 5,6,6,6,7,7,8,8) : 0.005249  
DECOR LOT (6,7,7,7,7,8,8 X 6,8,8) : 0.001953  
VANGOGH DELL'AD MONTES (4 X 4,7,8) : 0.001522  
FRANCINI'S LUCA (5,6 X 7,7) : 0.001465  
LEM DEL RESEGONE (6,7,7,8,8,8,8,8 X 6,7,8,8,8,8,8) : 0.001343  
FRANCINI'S SALLY (5 X 7) : 0.000519  
MERA DELL'ORSONE (6,7,8,8,8 X 6,8,8,8) : 0.000427  
DUN DEL MESCHIO (7,8,8,8,8,8 X 8,8) : 0.000366  
DEM (6,7,7 X 8,8,8) : 0.000366  
RADENTIS GIAN (6,6 X 8) : 0.000244  
FRANCINI'S PEGGY (7,8,8 X 7) : 0.000122  
OLAF DEI TRE PONTI (6 X 6,8) : 0.000122



Note : les données ne sont pas garanties. Elles ont été entrées par les membres sans garantie d'exactitude.

