

AURORA DEL CACCIATORE

2012-02-20 (F) FCA2668
 Couleur : Blanco y negro (bluebelton)
[fiche affixe](#)

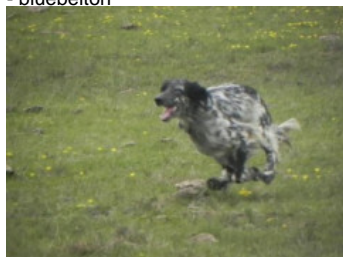


hosted by [setter-anglais.fr](#)

Père

[LEMBO DELLA VECCHIA IRLANDA](#)

2010-07-10 (M)
 LOI LO10144498
 - bluebelton



[GIBELTARIK EMERSON](#) 2003-04-04
 (M) LOE 1561594 (CH.Int.GQ) - liver



[GIBELTARIK BORIS](#) 2000-12-14 (M)
 GKC02014 (Ch T GQ) - liver



[DENNY](#) 1995-02-11 (F) LOI
 ST515750 - liver

[TURBO DELLA VECCHIA IRLANDA](#)
 2007-06-08 (M) LOI LO0836544 -
 lemon

[ZETA DELLA VECCHIA IRLANDA](#)
 2008-04-28 (F) LOI LO091889 - lemon

[GIBELTARIK BLONDIE](#) 2000-12-11
 (F) LOI LO02122551 (CHIT.T) - lemon



[DODGE DEL TIRSO](#) 1998-02-14
 (M) LOI LO9942918
 (Ch IT IT-T, CHIB,
 Camp. Tr. (Ch GQ)) -
 bluebelton



[RADENTIS ERICA](#)
 1995-05-25 (F) LOI
 ST531494 ((CH(I)B)) -
 lemon

[ARNO](#) 1988-04-17
 (M) LOI ST374735
 (Ch. Int. Lav., Camp.
 Ripr., Ch. Ital. Lav.) -
 lemon



[PICENUM UNGA](#)
 1990-10-02 (F) LOI
 ST430406 (CH GQ) -
 liver

[KURT](#) 2002-03-20
 (M) LOI LO02108880
 (Ch. Ital. Lav., Camp.
 Ripr.) - bluebelton









[HARFA DELLA VECCHIA IRLANDA](#)
 2004-01-03 (F) LOI
 LO0453516 - lemon

[DODGE DEL TIRSO](#) 1998-02-14
 (M) LOI LO9942918
 (Ch IT IT-T, CHIB,
 Camp. Tr. (Ch GQ)) -
 bluebelton



[RADENTIS ERICA](#)
 1995-05-25 (F) LOI
 ST531494 ((CH(I)B)) -
 lemon

<p>Mère <u>KATY DEL CACCIATORE</u> (F) 2305 - lemon</p> 	<p><u>COBRA DU MAS DE FONTCOUVERTE</u> 2007-04-30 (M) LOF 195528 - lemon</p> 	<p><u>GIBELTARIK OMAR</u> 2005-10-10 (M) LOF 195275/31313 - lemon</p> 	<p><u>GIBELTARIK EMERSON</u> 2003-04-04 (M) LOE 1561594 (CH.Int.GQ) - liver</p> 
	<p><u>BLANCA DEL CACCIATORE</u> (F) 2125</p>	<p><u>UNE-DE-MIEL DE LA CROIX GENTILHOMME</u> 2003-08-12 (F) LOF 172539/33621 - lemon</p>	<p><u>PEKY DEL RINCON DE LAS CARAVELAS</u> 2004-05-15 (M) FCA2044 - lemon</p>
		<p><u>NANQUE DEL CACCIATORE</u> (F) 1886</p>	<p><u>PANGO DU MAS D'EYRAUD</u> 1999-06-15 (M) LOF 148377/24028 (TR CHA CHP CH.T. VOF/FTA) - lemon</p> 
			<p><u>SLY DE LA CROIX GENTILHOMME</u> 2001-04-20 (F) LOF 158651/30384 - tricolore</p> 
			<p><u>NATO DE PLAYABARRI</u> (M) KCU16006/1998(URUGUAY)</p>
			<p><u>PRINCE DEL RINCON DE LAS CARAVELAS</u> (F) KCU17601/2003(URUGUAY)</p>
			<p><u>RAIANO CLOD</u> (M) FCA1826 - bluebelton</p>
			<p><u>DEA DEL CACCIATORE</u> (F) FCA1619 (CHT) - lemon</p>

Eleveur : RAFAEL ALBERTO DIGIANO / Propriétaire : MIGUEL ANGEL TREVISAN
Sang italien (estimation) : 87 %
Estimation des points au pédigrée : 11

Taux de consanguinité (estimation) : 6.8 %

GIBELTARIK EMERSON (2 X 4) : 0.031555
GIBELTARIK BLONDIE (3,5 X 5) : 0.010490
RAIDENTIS SBRANCO (5,5,7,7 X 5,7,7) : 0.005447
RAIDENTIS ERICA (4,4,6 X 6,6) : 0.004601
DODGE DEL TIRSO (4,4,6 X 6,6) : 0.004532
ARNO (4,7 X 6,6) : 0.002197
PICENUM UNGA (4,7 X 6,6) : 0.002197
RAIDENTIS GIAN (7,7,7,7,7 X 7,7,8,8) : 0.001953
DECOR LOT (7,7,7,7,8,8,8,8,8,8,8,8,8,8 X 8,8,8,8) : 0.001587
LERRY (6 X 5) : 0.000977
SWING DELLA VECCHIA IRLANDA (5,8 X 7,7,7,8) : 0.000875
AMBO DEL VARO (6,6,6,6,8,8,8 X 8,8,8,8) : 0.000610
ROYAL VIENNA (7,7,7,7 X 8) : 0.000244
ODE DEL SOLE (5,5,7,7 X 7,7) : 0.000244
OLAF DEL TRE PONTI (8,8,8,8 X 8) : 0.000122
HALOA DELLA VECCHIA IRLANDA (6,7 X 8,8,8) : 0.000122
LEM DEL RESEGONE (8 X 8) : 0.000031
FRANCINI'S RAS (8 X 8) : 0.000031



Note : les données ne sont pas garanties. Elles ont été entrées par les membres sans garantie d'exactitude.

