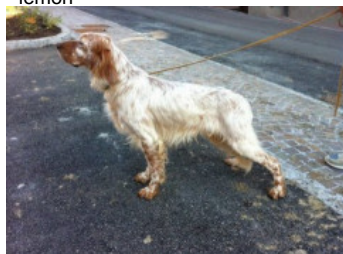


**FRANCO**

2014-06-03 (M) LOI LO14114488  
Couleur : BIANCO ARANCIO (lemon)



Père  
**GION DI CROCEDOMINI**  
2008-01-06 (M)  
LOI LO08103087  
(Camp. Ripr. (CH))  
- lemon



**GIBELTARIK FLEMMING** 2003-08-23  
(M) LOI LO0790204 - lemon

**EVA DI CROCEDOMINI** 2004-05-01  
(F) LOI LO04101913 (Camp. Ital. Lav.) -  
bianco nera



**RADENTIS COBRA** 2000-06-30 (M)  
LOI LO0128791 (Camp. Tr. (Ch GQ)) -  
lemon



**RADENTIS ERICA** 1995-05-25 (F)  
LOI ST531494 ((CH(IB)) - lemon



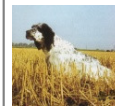
**FULL** 2002-03-19 (M) LOI  
LO02125349 - lemon



**HEVELIN DI CROCEDOMINI**  
2000-06-01 (F) LOI LO00125548 -  
bluebelton



**LERRY** 1997-02-14 (M)  
LOI ST555862 (Ch GQ, Ch  
IT) - bluebelton



**RADENTIS BELLA**  
1997-01-13 (F) LOI  
ST559827 (IT Ch GQ) -  
lemon



**RADENTIS  
SBRANCO**  
1991-07-01 (M) LOI  
ST448908 (CH IB, Ch.  
Int. Lav.) - lemon



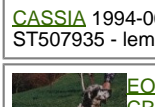
**ODE DEL SOLE** 1993-09-10 (F) LOI  
ST490145 - liver



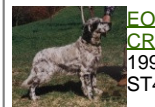
**FIERO** 1996-08-10  
(M) LOI ST551356  
(CHGQ, Ch ITF, Ch IB, Ch  
ITT) - lemon



**CASSIA** 1994-06-19 (F) LOI  
ST507935 - lemon








**FOLO DI  
CROCEDOMINI**  
1990-04-15 (M) LOI  
ST417538 - bluebelton



**BIBA DI  
CROCEDOMINI**  
1997-01-10 (F) LOI  
ST557013 - tricolore



<p>Mère <u>ANITA</u> 2011-12-02 (F) LOI LO1225723 - bluebelton</p> 	<p><u>IGOR</u> 2003-05-26 (M) LOI LO03147210 - tricolore</p> 	<p><u>GIM</u> 1999-03-07 (M) LOI LO99126600 - tricolore</p>	<p><u>FRANCINI'S JEFF</u> 1993-04-03 (M) LOI ST479317 (Ch. Ital. Lav., Ch. Int. Lav., Camp. Ripr.) - bluebelton</p>
	<p><u>UBA DI CROCEDOMINI</u> 2010-12-01 (F) LOI LO1127332 - bluebelton</p> 	<p><u>DESI</u> 2000-11-21 (F) LOI LO0199482 - bluebelton</p>	<p><u>FRANCINI'S DERA</u> 1997-06-03 (F) LOI LO9856897 - bluebelton</p>
	<p><u>HILL DI CROCEDOMINI</u> 2008-03-20 (M) LOI LO08106958 - bluebelton</p> 	<p><u>SHIFFER</u> 1996-07-13 (F) LOI ST547867 - bluebelton</p>	<p><u>CLEM</u> 2004-01-03 (M) LOI LO0456911 (Ch. Ital. Lav., Ch. Int. Lav.) - bluebelton</p>
	<p><u>MANON DI CROCEDOMINI</u> 2009-03-08 (F) LOI LO0976500 - bluebelton</p> 	<p><u>ALICE DI CROCEDOMINI</u> 2004-03-05 (F) LOI LO04122672 - tricolore</p>	<p><u>LUPIN DELLO ZORINO</u> 2005-09-10 (M) LOI LO0643055 (Camp. Ripr.) - tricolore</p>
		<p><u>EVA DI CROCEDOMINI</u> 2004-05-01 (F) LOI LO04101913 (Camp. Ital. Lav.) - bianco nera</p>	<p><u>EVA DI CROCEDOMINI</u> 2004-05-01 (F) LOI LO04101913 (Camp. Ital. Lav.) - bianco nera</p>

Eleveur : Massimo Vassallo / Propriétaire : Massimo Vassallo  
Puce : 380260040819197  
Estimation des points au pédigrée : 17

## Taux de consanguinité (estimation) : 5.1 %

EVA DI CROCEDOMINI (2 X 4) : 0.031845  
LERRY (4 X 5) : 0.003967  
BIBA DI CROCEDOMINI (4 X 5,6) : 0.003906  
RADENTIS GIAN (6,6,6,6,7,7 X 7,8,8,8,8) : 0.003052  
LEM DEL RESEGONE (6,7,8,8 X 7,8,8,8,8,8) : 0.001709  
DUN DEL MESCHIO (7,8,8,8,8,8,8 X 7,8,8,8,8) : 0.001648  
ARNO (5,5 X 6,7) : 0.001465  
DECOR LOI (7,7,7,7,7,8,8,8,8,8,8,8 X 8,8) : 0.000977  
OLAF DEI TRE PONTI (7,7,8 X 7,7,8) : 0.000763  
AKIRA DEL VARO (5 X 7,7,8) : 0.000755  
CASIMIR (5 X 7,7,8) : 0.000732  
ROVAL VIENNA (6,6,7 X 8,8) : 0.000366  
KROL DI CROCEDOMINI (6,7 X 8,8) : 0.000122  
EMO DELLA TRAPPOLA (7 X 8,8) : 0.000061  
FLAY DEL DIANELLA (7 X 8,8) : 0.000061  
DERK (8 X 7) : 0.000061



Note : les données ne sont pas garanties. Elles ont été entrées par les membres sans garantie d'exactitude.

