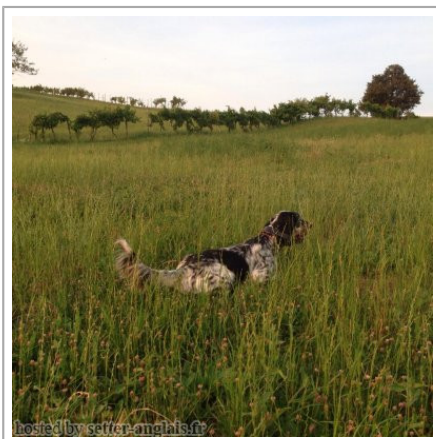











MARZALE'S EDIMBURGO

2010-06-01 (M) LOI LO10104482
Couleur : TRICOLE
[fiche affixe](#)



| | | | |
|--|---|---|--|
| <p>Père ORIO 2002-05-14 (M) LOI LO02116390 (Camp. Tr. (Ch GQ)) - bluebelton</p>  | <p>TODAY 2001-05-07 (M) LOI LO01146212 (Camp. Tr. (Ch GQ)) - bluebelton</p>  | <p>PALAZIENSIS PEPE 1997-07-03 (M) LOI LO99203608 - liver</p>  | <p>GUERCINO DELLA FRATTONA 1996-05-07 (M) LOI ST554737 - bluebelton</p> |
| | <p>TOSCA DELLE OROBICHE 1999-11-19 (F) LOI LO0035313 (Camp. Ripr.) - bluebelton</p> | <p>BEA DEL ZAGNIS 1999-07-01 (F) LOI LO0057831 - bluebelton</p> | <p>OLAF 1990-04-30 (M) LOI ST422637 (Ch. Ital. Lav., Ch. Int. Lav., Camp. Ripr.) - bluebelton</p> |
| | <p>ILIO CAMP 1992-05-03 (M) LOI ST468051 (Ch. Ital. Lav., Camp. Ripr.) - bluebelton</p>  | <p>GAETANO DEL BINARIO 1987-06-09 (M) LOI ST356411 (Camp. Int. Lav (Ch IT), Camp. Ital. Lav., Camp. Trialler (Ch GQ)) - bluebelton</p> | <p>DIBA DEL VARO 1986-09-28 (F) LOI ST340750 - tricolore</p> |
| | <p>LEDA DELLE OROBICHE 1995-11-07 (F) LOI ST544313 - bluebelton</p> | <p>NEGUS 1988-09-05 (M) LOI ST382982 (Camp. Tr. (Ch GQ), Camp. Int. Lav (Ch I T)) - bluebelton</p> | <p>DIA DU MAS D'EYRAUD 1988-12-20 (F) LOI ST462301 (Ch T) - bluebelton</p> |

| | | | |
|--|---|--|---|
| <p>Mère</p> <p><u>BICEZIA DELLA RISERVA REALE</u> 2007-07-18 (F) LOI LO0879129 (Camp. Ripr.) - bluebelton</p>  | <p><u>PALAZIENSIS RAMBO</u> 1999-11-01 (M) LOI LO0060896 (Ch W0F/ICH, IT T, ITF, Camp. Tr. (Ch GQ), CH(ES)T, CH(GB)T) - lemon</p>  | <p><u>PALAZIENSIS PEPE</u> 1997-07-03 (M) LOI LO99203608 - liver</p>  | <p><u>GUERCINO DELLA FRATTONA</u> 1996-05-07 (M) LOI ST554737 - bluebelton</p> |
| | <p><u>MEY</u> 2002-05-07 (F) LOI LO0295505 (CH(I)B) - tricolore</p> | <p><u>LADY</u> 1994-04-30 (F) LOI ST499069 (Ch A) - bluebelton</p> | <p><u>IRAK DEI LADERCHI</u> 1990-01-10 (M) LOI ST411384 - tricolore</p> |
| | <p><u>STING</u> 1998-07-04 (M) LOI LO9977173 - bluebelton</p> | <p><u>LOLA</u> 1988-05-03 (F) LOI ST366110 - bluebelton</p> | <p><u>VOLO</u> 1994-08-03 (M) LOI ST519603 (Ch. Ital. Lav., Ch. Int. Lav., Camp. Ripr.) - bluebelton</p> |
| | <p><u>ESTER ALESS SETTER</u> 1999-05-10 (F) LOI LO0056710 - lemon</p> | <p><u>BRENDA</u> 1994-07-25 (F) LOI ST519656 - bluebelton</p> | <p><u>ARNO</u> 1988-04-17 (M) LOI ST374735 (Ch. Int. Lav., Camp. Ripr., Ch. Ital. Lav.) - lemon</p>  |
| | | <p><u>ANI</u> 1994-05-02 (F) LOI ST503681 (Ch. Ital. Lav.) - lemon</p>  | |

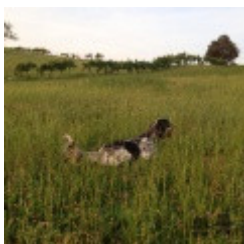
Eleveur : COTI ZELATI GIUSEPPE / Propriétaire : COTI ZELATI GIUSEPPE

Puce : 380260040450469

Estimation des points au pédigrée : 43

Taux de consanguinité (estimation) : 4.1 %

PALAZIENSIS PEPE (3 X 3) : 0.031921
DUN DEL MESCIO (6,7,7,7,8,8,8,8 X 7,7,8,8,8) : 0.002930
DECOR LOT (6,7,7,8,8 X 6,7,7,7,8,8) : 0.002380
LOPEZ DELLA BASSANA (8,8 X 7,7,7,7,7,7,8,8,8,8,8,8,8) : 0.001099
ROYAL MOZART (6,7 X 6,6,7) : 0.000732
CALIGOLA DELLE OROBICHE (5,7 X 7) : 0.000488
ORFEO DELLA TRAPPOLA (6,7,8 X 7) : 0.000244
EMO DELLA TRAPPOLA (6,7 X 6) : 0.000244
LAICA DI POMPIANO (8 X 7,7,8,8,8) : 0.000183
CRISMANI OLAF (7,8,8,8 X 8,8,8) : 0.000153
LEM DEL RESEGONE (7,7,8,8 X 8) : 0.000153
TOBIA (7,7,8 X 8) : 0.000122
ASTER (8 X 8) : 0.000031
VESPER DEI DIAVOLI BIANCHI (8 X 8) : 0.000031



Note : les données ne sont pas garanties. Elles ont été entrées par les membres sans garantie d'exactitude.

