







KIM 6

1952-04-12 (M) LOI 94651.52

Color: Noi.PBl.Env (bluebelton) / Qualifications: Ch B



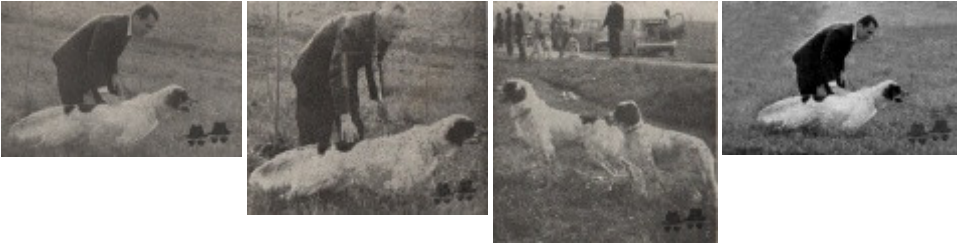
Father GONZAGHENSIS MUR 1949-05-20 (M) LOI 84079.51 (Ch L R) - bluebelton 	GONZAGHENSIS MILO (M) LOI 37347.44 (Ch L)	LINGFIELD MYSTIC 1933-04-13 (M) KCSB397QQ (Ch L) - bluebelton 	 LINGFIELD LARGOS 1930-02-14 (M)
	LÉDA DI SAN PANCRAZIO (F) LOI 37796.44	DIA 3 (F) LOI	BRATTON VENUS OF THORNYCROFT 1927-03-10 (F) KCSB1036JJ - bluebelton
Mother SIGMA 3 1948 (F) LOI 60810.48	SLIM (M) LOI	FRAM 10 (M) LOI	 VANE DI SAN PATRICK 1932-01-17 (M) LOI 10109.32 - bluebelton
	NORMA (F) LOI	MIRKA 9 (F) LOI	WANDA 3 (F) LOI BRICK DEL LIDO (M) LOI IRIS 2 D'ANTENORE (F) LOI
		SER DI VALPADANA (M) LOI	unknown
		BILLA 2 (F) LOI	unknown
		BRONI 1935-03-25 (M) LOI 15155.35 - bluebelton 	unknown
		SELECTUS MIRNA (F) LOI	unknown
			BOBBY 2 1932 (M) LOI 9993.32
			TEYDE 1932 (F) LOI 10520.32
			 LINGFIELD MYSTIC 1933-04-13 (M) KCSB397QQ (Ch L) - bluebelton
			DIANA 19 1935 (F) LOI 14470.35

Points in pedigree: 30

Estimated coefficient of inbreeding: 2.2 %

[LINGFIELD MYSTIC](#) (3 X 4) : 0.016632
[WEST DOWN VANE](#) (5,6 X 5,6,7) : 0.002930
[LAMON VIS](#) (6,8 X 6,7,8) : 0.001068
[STYLISH TURVY](#) (5,5 X 6) : 0.000977
[LAMON PITCH](#) (6,8 X 7) : 0.000305
[VOLUNTEER](#) (7,7,8 X 8) : 0.000122
[COUNT BRUSH](#) (8,8,8 X 8) : 0.000061
[KIT DELLA SPIA](#) (8 X 7) : 0.000061
[WEST DOWN TACKLE](#) (7,8 X 8) : 0.000031





Note: data are entered by members. There is no guarantee about accuracy of data.