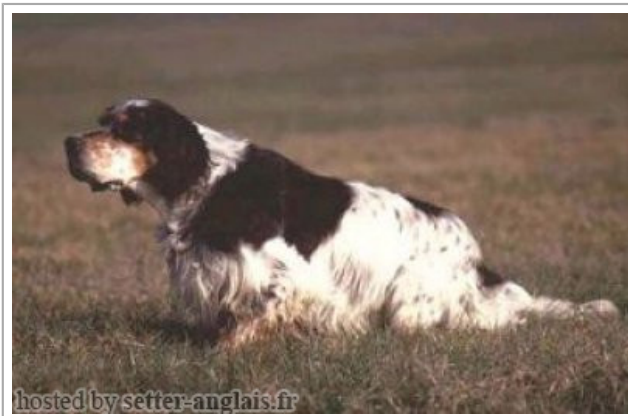


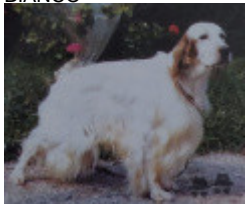


**MARK DELLA BASSANA**

1985-05-20 (M) LOI ST317648

Color: TRICOLORE / Qualifications: Camp. Assoluto, Ch. Ital. Lav., Camp. Ripr. Kennel



<p>Father</p> <p><a href="#">ITRI DELLA BASSANA</a> 1978-04-24 (M) LOI ST133195 (Camp. Ripr.) - lemon</p>	<p><a href="#">LOPEZ DELLA BASSANA</a> 1973-03-26 (M) LOI ST061329 (Ch IB, Ch I BT) - BIANCO</p> 	<p><a href="#">UP DI CEREIA</a> 1970-07-08 (M) LOI ST30970 (Ch Italie B, Ch Reproducteur)</p>	<p><a href="#">LINDO 3 DI CEREIA</a> 1961-06-07 (M) LOI 12103 (Ch L Ch Int) - lemon</p>	
	<p><a href="#">LAICA DI POMPIANO</a> 1972-12-29 (F) LOI ST057261</p>	<p><a href="#">AMBA DELLA BASSANA</a> 1969-09-26 (F) LOI ST24136</p>	<p><a href="#">ROLL DI POMPIANO</a> 1970-04-06 (M) LOI ST29965</p>	<p><a href="#">LINA DI CEREIA</a> 1966-01-01 (F) LOI ST17864</p>
<p>Mother</p> <p><a href="#">CIBA DELLA BASSANA</a> 1979-03-15 (F) LOI ST200257 (Camp. Ripr.) - tricolore</p> 	<p><a href="#">LOPEZ DELLA BASSANA</a> 1973-03-26 (M) LOI ST061329 (Ch IB, Ch I BT) - BIANCO</p> 	<p><a href="#">UP DI CEREIA</a> 1970-07-08 (M) LOI ST30970 (Ch Italie B, Ch Reproducteur)</p>	<p><a href="#">LINDO 3 DI CEREIA</a> 1961-06-07 (M) LOI 12103 (Ch L Ch Int) - lemon</p>	
	<p><a href="#">TJNE DEL TARTARO</a> 1973-06-28 (F) LOI ST63814</p>	<p><a href="#">AMBA DELLA BASSANA</a> 1969-09-26 (F) LOI ST24136</p>	<p><a href="#">BELINDA DELLA GIGIA</a> 1970-07-23 (F) LOI ST32547</p>	<p><a href="#">PERICLE DEL BREMBO</a> (M) LOI ST9936</p>
		<p><a href="#">CRISMANI DUMBO</a> 1969-02-26 (M) LOI ST32957 - tricolore</p>	<p><a href="#">BORKO</a> 1966-06-11 (M) LOI ST012736</p>	<p><a href="#">DORA 133</a> (F) LOI ST29484</p>
		<p><a href="#">FARA</a> 1971-04-14 (F) LOI ST037657</p>	<p><a href="#">CRISMANI ASTRO</a> (M) LOI ST27622</p>	<p><a href="#">QUINA DELLA GIGIA</a> 1968-06-10 (F) LOI ST15912</p>
			<p><a href="#">SAULO DI CEREIA</a> 1968-05-10 (M) LOI ST15347 (CHIT INTCH)</p>	
			<p><a href="#">GAIA DELLE MORENE</a> (F) LOI ST26657</p>	

Breeder: LUI REMO / Owner: Remo Lui  
Points in pedigree: 44

## Estimated coefficient of inbreeding: 13.1 %

[LOPEZ DELLA BASSANA](#) (2 X 2) : 0.125000  
[CRISMANICALI](#) (6 X 5,6,7) : 0.001099  
[OTTO DELLA NIVA](#) (5 X 5,6) : 0.000977  
[CRISMANI DAIANA](#) (5 X 5,6) : 0.000977  
[ASTRA 5](#) (7,8 X 6,6,7,8) : 0.000580  
[QUES DELLE MORENE](#) (8,8,8 X 7,7,7,7,8,8,8) : 0.000427  
[TELL68](#) (8,8 X 7,7,8,8,8,8) : 0.000305  
[FRECCIA DEL BREMBO](#) (5,7,8 X 8) : 0.000244  
[RAF2](#) (8,8 X 7,7,8,8) : 0.000244  
[COMMENDATORE DEL BREMBO](#) (6,7 X 7) : 0.000244  
[CRISMANI BLACK](#) (7,8 X 6,7,8) : 0.000214  
[QUEROS DELLE MORENE](#) (7,8 X 7,7,8) : 0.000183  
[MECO DELLA NIVA](#) (6,8 X 6,7) : 0.000183  
[LAMONTILL](#) (8,8 X 7,7,8) : 0.000153  
[LEO DELLA ZARA](#) (8 X 8,8,8,8,8,8) : 0.000122  
[ALA 28°](#) (8 X 8,8,8,8,8,8) : 0.000122  
[TURBINE](#) (8 X 7) : 0.000061



Note: data are entered by members. There is no guarantee about accuracy of data.