

**EUSKITZE AS**

2001-09-28 (M) LOE 1283965

Color: Fau.PBl.Env. (lemon) / Qualifications: Ch IT GQ  
Kennel

RADENTIS SBRANCO 1991-07-01 (M)  
LOI ST448908 (CH IB, Ch. Int. Lav.) - lemon



Father  
RADENTIS D'ESPANA 1995-05-22 (M)  
LOE 990823 (Ch IT B, Ch GQ) - lemon



RADENTIS BORG 1987-04-30 (M) LOI  
ST350267 (Ch. Int. Lav., CH GQ, Ch. Ital. Lav.,  
Camp. Ripr.) - lemon



RADENTIS GIAN 1983-01-02 (M) LOI  
ST258470 (Ch. Ital. Lav., Ch. Int. Lav., Camp.  
Ripr.) - lemon



DOLLY DELLA VECCHIA IRLANDA  
1980-02-16 (F) LOI ST213976 -  
bluebelton

RADENTIS DIDO 1981-04-01 (M) LOI  
ST228056 - bluebelton



ROVAL EDI 1981-10-11 (F) LOI  
ST239196 - bluebelton

RADENTIS ALA 1994-03-15 (F) LOI  
ST496649 (Ch T) - lemon

RADENTIS BORG 1987-04-30 (M) LOI  
ST350267 (Ch. Int. Lav., CH GQ, Ch. Ital. Lav.,  
Camp. Ripr.) - lemon



RADENTIS GIAN 1983-01-02 (M) LOI  
ST258470 (Ch. Ital. Lav., Ch. Int. Lav., Camp.  
Ripr.) - lemon








DOLLY DELLA VECCHIA IRLANDA  
1980-02-16 (F) LOI ST213976 -  
bluebelton

RADENTIS RAISSA 1991-05-30 (F)  
LOI ST448920 - lemon

RADENTIS OMAR 1990-01-06 (M) LOI  
ST414189 - bluebelton

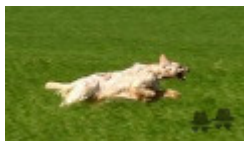
FAUNA DELLA VECCHIA IRLANDA  
1985-01-02 (F) LOI ST302135 - lemon

<p>Mother <u>NESKA</u> 1997-09-02 (F) LOE 873632 (Ch IT) - tricolore</p> 	<p><u>EUSKITZE DAMBA</u> (M) LOE 577594</p> 	<p><u>BOI</u> 1984-02-20 (M) LOF 96481/12378 (TR) - bluebelton</p> 	<p><u>ORFEO DELLA TRAPPOLA</u> 1973-10-11 (M) LOI ST067273 (Ch Italie, T GQ) - tricolore</p> 
	<p><u>CINA DE GONZA LOSA</u> (F) LOE 640953 (Champion)</p>	<p><u>OREKA BERA</u> (F) LOE 442377 (Ch T CH IT)</p>	<p><u>BISCIA DEL SOLE</u> 1980-03-08 (F) LOI ST212543 (Ch T) - bluebelton</p>
		<p><u>LIY OD BENCICA</u> (M) LOE 522104</p>	<p><u>NORMA DEL CENTRO MARCHE</u> 1985-12-27 (F) LOE 346186 - tricolore</p>
		<p><u>GARA DE PLAYABARRI</u> (F) LOE 480887</p> 	<p><u>KIP OD BENCICA</u> (M) JR42324 (Ch IB Ch IT)</p>
			<p><u>FATTA OD BENCICA</u> (F) JR42713ES (Ch T)</p>
			<p><u>ARIS DE PLAYABARRI</u> (M) LOE 384802 (CH L CHINT)</p>
			<p><u>DIVA DU MAS DES CHÈVRES</u> (F) LOE 417615 (CH L CHINT)</p>

Owner: Gaspar IBARLUZEA  
 LOE=LOE-1283965 LO3=5019608 TrGB(E.05) (Ch GQ) GQ : 2 CACIT, 3 RCACIT. LOF=5019608Cot.5  
 Tatroo: 008138C  
 Italian breeding (estimated): 100%  
 Points in pedigree: 62

## Estimated coefficient of inbreeding: 1.6 %

RADENTIS DIDO (4,5 X 5) : 0.005859  
DUN DEL MESCHIO (6,6,7,7,7,7,8,8,8 X 7,7,7,8,8,8) : 0.004944  
DECOR LOT (5,5,5,5,6,7,7,7 X 6) : 0.003662  
LINDO 3 DI CEREIA (7,7 X 7,8,8) : 0.000488  
ARNO II DI VAL D'IDICE (7,8 X 7,8) : 0.000275  
VIMON REVEL (7,8,8,8,8 X 8) : 0.000183  
BOBET DI SAN FAUSTINO (8 X 6,8) : 0.000153  
CRISMANI DIK (8,8,8,8 X 8) : 0.000122  
ALMAR DARMA (8,8 X 7) : 0.000122  
CLAVARENSIS BETTY (8,8 X 7) : 0.000122  
DAGA (7,7 X 8) : 0.000122  
SARA 6 (8,8,8,8 X 8) : 0.000092  
ZAR 11 (8,8,8,8 X 8) : 0.000092  
BRICK DEL ROVERE (8,8,8 X 8) : 0.000092  
VAVA DEL TIDONE (8 X 8,8) : 0.000061



Note: data are entered by members. There is no guarantee about accuracy of data.