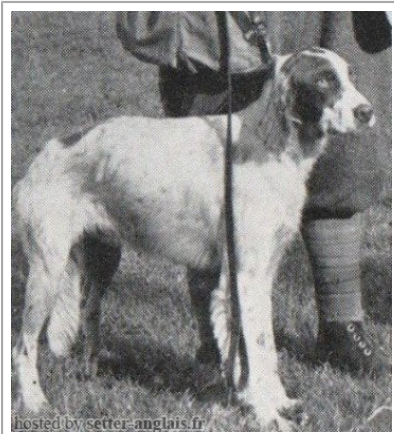


CANNON BONDHU

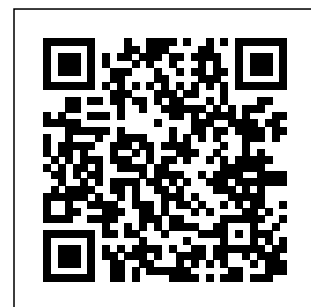
1948-01-09 (M) KCSB404AG
Couleur : Mar.PBl.Env (liver) / Titres : F T CH
[fiche affixe](#)



hosted by setter-anglais.fr

Père <u>YANKEE BONDHU</u> 1942-03-23 (M) KCSB1592AF (Ch T) - bluebelton	<u>NYDIUS</u> 1934 (M) LOI	<u>PICKWICK</u> (M)	<u>WELCOME</u> (M)	
		<u>HORSFORD COUNTESS DIME</u> 1932 (F)	<u>PILOT QUEEN</u> (F)	
	<u>HORSFORD KITTY WIND'EM</u> 1933-08-10 (F) AKCA11441 - tricolore	<u>HIGHTONE TONY</u> 1925-11-06 (M) FDSB134108@ (Am. Ch.) - bluebelton	<u>HORSFORD COUNT DAVE</u> 1981-10-18 (M) LOI 241528 - bluebelton	<u>HORSFORD COUNTESS GABY</u> (F) LOI FDSB241320
		<u>PALIACHO'S JESSIE B</u> 1925-08-03 (F) FDSB.139885 - bluebelton	<u>COUNT'S TONY ANTONIO</u> 1914-02-03 (M) FDSB36830 - bluebelton	<u>GIBRALTAR ROD'S LADY</u> 1923-05-17 (F) FDSB90362 - bluebelton
Mère <u>HORSFORD DASHING DESTINE</u> (F) KCSB2849CG	<u>HORSFORD DASHING DAN</u> 1934-02-22 (M) KCSB1137RR - bluebelton	<u>HORSFORD DASHING VISCOUNT</u> 1927-05-06 (M) FDSB241277	<u>PINTO BONDHU A.K.A. PONTO BONDHU</u> (M)	
		<u>HORSFORD DASHING DUCHESS</u> (F) FDSB241278	<u>QUAIL BONDHU</u> (F)	
	<u>SILK BONDHU</u> (F)	<u>SPECK BONDHU</u> (M)	<u>DASHING PRINCE</u> (M)	<u>JAYS JOY</u> (F)
		<u>HORSFORD DASHING DALEY</u> 1934-02-22 (F)	<u>DASH BONDHU</u> (M)	<u>RUBY BONDHU</u> (F)
		<u>HORSFORD DASHING VISCOUNT</u> 1927-05-06 (M) FDSB241277	<u>HORSFORD DASHING DUCHESS</u> (F) FDSB241278	

Sang italien (estimation) : 12 %
Estimation des points au pédigrée : 26





Note : les données ne sont pas garanties. Elles ont été entrées par les membres sans garantie d'exactitude.

