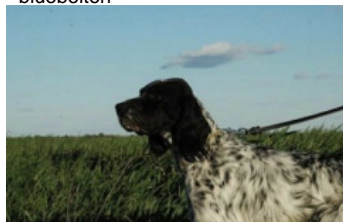


**AFO**

2015-06-30 (M) LOE 2262597  
Couleur : Liver



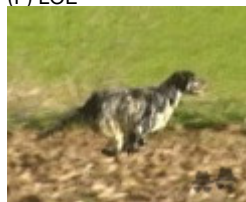
Père  
**EUSKITZE HAKINNEN**  
2008-05-12 (M)  
LOE 1816533  
(TR.GB)  
- bluebelton



**PALAZIENSIS RAMBO** 1999-11-01  
(M) LOI LO0060896 (Ch W0F/ICH, IT T,  
ITF, Camp. Tr. (Ch GQ), CH(ES)T, CH(GB)T) -  
lemon



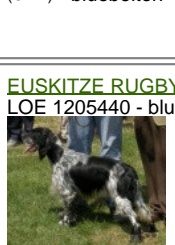
**EUSKITZE FIORENTINA** 2006-06-19  
(F) LOE



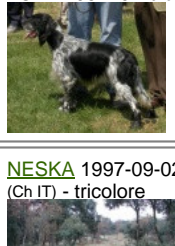
**PALAZIENSIS PEPE** 1997-07-03 (M)  
LOI LO99203608 - liver



**LADY** 1994-04-30 (F) LOI ST499069  
(Ch A) - bluebelton



**EUSKITZE RUGBY** 2000-06-02 (M)  
LOE 1205440 - bluebelton



**NESKA** 1997-09-02 (F) LOE 873632  
(Ch IT) - tricolore



**GUERCINO DELLA FRATTONA**  
1996-05-07 (M) LOI ST554737 -  
bluebelton

**PALAZIENSIS NIVES** 1995-11-13 (F)  
LOI ST529742 - liver

**IRAK DEL LADERCHI** 1990-01-10 (M)  
LOI ST411384 - tricolore

**LOLA** 1988-05-03 (F) LOI ST366110 -  
bluebelton

**RADENTIS  
SBRANCO**  
1991-07-01 (M) LOI  
ST448908 (CH IB, Ch.  
Int. Lav.) - lemon

**EUSKITZE KATI** (F) LOE 755772

**EUSKITZE DAMBA** (M)  
LOE 577594

**CINA DE GONZA LOSA** (F) LOE  
640953 (Champion)

**KAPO'** 2003-11-10 (M) LOI  
LO0439835 (Ch IT GQ) - bluebelton



**NERO** 1997-03-29 (M) LOI  
LO9817889 (Ch T, Ch GQ) - bluebelton



**KYBA** 1998-01-01 (F) LOI  
LO98118951 - lemon



**GUFO DI VAL DI CHIANA**  
1994-04-01 (M) LOI  
ST514177 (Ch GQ) -  
bluebelton

**KELLI** 1992-06-18 (F)  
LOI ST466220 -  
bluebelton

**VANGOGH DELL'AD MONTES**  
1992-07-30 (M) LOI ST463291 (Camp.  
Ripr.) - bluebelton

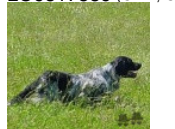
**SARA** 1989-04-30 (F) LOI ST395811 -  
bluebelton

**GUFO DI VAL DI CHIANA**  
1994-04-01 (M) LOI  
ST514177 (Ch GQ) -  
bluebelton

**KELLI** 1992-06-18 (F)  
LOI ST466220 -  
bluebelton

**TINA DI VAL DI CHIANA** 2006-07-19  
(F) LOI LO0773805 - bluebelton

**NERO** 1997-03-29 (M) LOI  
LO9817889 (Ch T, Ch GQ) - bluebelton



**SARA** 2001-06-03 (F) LOI  
LO01155872 - tricolore

**TARO DEI FELINI**  
1994-05-26 (M) LOI  
ST506181 (Ch Italie T, Ch IT T,  
Camp. Tr. (Ch GQ)) - tricolore

**EMI** 1998-09-01 (F) LOI LO9958199 -  
bluebelton

Mère  
**LEXI DI VAL DI CHIANA**  
2011-09-15 (F)  
LOE 2207275  
- Liver



Sang italien (estimation) : 100 %  
Estimation des points au pédigrée : 26

## Taux de consanguinité (estimation) : 1.2 %

DECOR LOT (6,6,7,7,7,7,7,8,8,8 X 6,6,7) : 0.005981

ROYAL MOZART (5,6,7 X 6) : 0.001762

LEM DEL RESEGONE (7,8,8 X 6,7,8,8,8,8,8,8,8) : 0.001709

ORFEO DELLA TRAPPOLA (6,7,8 X 7,7) : 0.000854

DUN DEL MESHIO (8,8,8,8,8 X 8,8,8,8,8,8) : 0.000793

MARK DELLA BASSANA (5 X 7) : 0.000549

OLAF DEI TRE PONTI (7,8 X 6) : 0.000366



Note : les données ne sont pas garanties. Elles ont été entrées par les membres sans garantie d'exactitude.