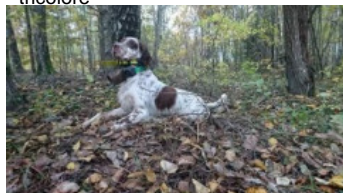


RENTSETTER FRODO

2017-02-17 (M) LOE 864479
Couleur : Blanco y naranja (lemon)
[fiche affixe](#)



Père
DENDABERRI NOSTRUM
2011-10-26 (M)
LOE 2068084
(Ch GS)
- tricolore



GIBELTARIK BORIS 2000-12-14 (M)
GKC02014 (Ch T GQ) - liver



DENDABERRI LIRU 2006-07-22 (F)
LOE 1662001 - lemon



DODGE DEL TIRSO 1998-02-14 (M)
LOI LO9942918 (Ch IT T, CHIB, Camp.
Tr. (Ch GQ)) - bluebelton



RADENTIS ERICA 1995-05-25 (F)
LOI ST531494 ((CH(I)B)) - lemon



RADENTIS D'ESPANA 1995-05-22
(M) LOE 990823 (Ch IT B, Ch GQ) -
lemon



DENDABERRI GINA (F) LOE
1512376



DERRYK
1991-05-10 (M) LOI
ST443351 (Ch GQ) -
bluebelton

ASTRA DEL TIRSO 1992-10-01 (F)
LOI ST454300 - lemon



**RADENTIS
SBRANCO**
1991-07-01 (M) LOI
ST448908 (CH IB, Ch.
Int. Lav.) - lemon

ODE DEL SOLE 1993-09-10 (F) LOI
ST490145 - liver





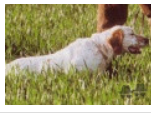






**RADENTIS
SBRANCO**
1991-07-01 (M) LOI
ST448908 (CH IB, Ch.
Int. Lav.) - lemon

RADENTIS ALA 1994-03-15 (F) LOI
ST496649 (Ch T) - lemon



PALAZIENSIS RAMBO
1999-11-01 (M) LOI
LO0060896 (Ch W0F/CH, IT T,
ITF, Camp. Tr. (Ch GQ), CH(ES)T,
CH(GB)T) - lemon

DENDABERRI CRISTINA 1999-10-12
(F) LOE 1134757 - lemon

<p>Mère</p> <p><u>JARA DE VECRIS</u> 2014-04-12 (F) LOE 98653145 - lemon</p>	<p><u>DENDABERRI NERUDA</u> 2011-12-31 (M) LOE 2101492 - liver</p> 	<p><u>GIBELTARIK CHESTER</u> 2001-11-05 (M) LOE KGC02202 (Ch GQ) - lemon</p> 	<p><u>FIERO</u> 1996-08-10 (M) LOI ST551356 (CHGQ, Ch ITF, Ch IB, Ch ITT) - lemon</p> 
	<p><u>ELFA 2 DE VECRIS</u> 2002-06-08 (F) LOE 976533</p>	<p><u>DENDABERRI JENI</u> 2007-04-01 (F) LOE 1718825</p>	<p><u>TRIKI DE L'EL BALDIO</u> (M) LOE 1314003 (TrGB(E.05)) - lemon</p> 
		<p><u>BICA DE PASARIN</u> 2006-10-25 (F) LOE 1651037 - bluebelton</p> 	<p><u>KAPO</u> 2003-11-10 (M) LOI LO0439835 (Ch IT GQ) - bluebelton</p> 
			<p><u>DENDABERRI FURIA</u> (F) LOE 1423396</p>
			<p><u>RADENTIS D'ESPANA</u> 1995-05-22 (M) LOE 990823 (Ch IT B, Ch GQ) - lemon</p> 
			<p><u>ROSY</u> (F) LOE 1245110</p>
			<p><u>ARNO</u> 2000-07-20 (M) LOE 1637111 - lemon</p> 
			<p><u>USA DOS POTINHOS</u> 2003-07-23 (F) LOE 1536356 (Ch C) - bluebelton</p> 

Sang italien (estimation) : 91 %
Estimation des points au pédigrée : 26

Taux de consanguinité (estimation) : 7.6 %

RADENTIS D'ESPANA (3 X 4) : 0.018433
RADENTIS ERICA (3 X 4) : 0.016449
RADENTIS GIAN (6,6,6,6,6,7,8,8 X 6,6,7,7,7,7,8,8,8,8) : 0.011169
DECOR LOT (6,6,7,7,7,7,7,7,7,7,8,8 X 7,7,7,8,8,8,8,8,8,8,8,8,8,8) : 0.009979
RADENTIS SBRANCO (4,4 X 5,5) : 0.008301
PALAZIENSIS RAMBO (4 X 5) : 0.003906
RADENTIS BORG (5,5,5 X 6,6,6) : 0.001953
AMBO DEL VARO (5,5 X 6) : 0.001007
ROVAL VIENNA (6,6 X 6,7) : 0.000977
OSCAR (5 X 6) : 0.000977
DUN DEL MESCHIO (7,8,8,8,8,8,8,8,8 X 8,8,8,8) : 0.000946
ROVAL MOZART (5,8 X 7) : 0.000566
RADENTIS DIDO (6,6,7 X 7,7,8) : 0.000244
SWING DELLA VECCHIA IRLANDA (7 X 6,8) : 0.000244
ATOS DELLE TORRICELLE (6 X 7,8) : 0.000122
BERNA (7,7 X 7,8,8) : 0.000122
OLAF DEI TRE PONTI (7,7 X 7,8,8) : 0.000122
BAIRO (7,7,7,8 X 8,8,8) : 0.000092
KIP OD BENCICA (8 X 8) : 0.000031
FATTA OD BENCICA (8 X 8) : 0.000031
EMO DELLA TRAPPOLA (8 X 8) : 0.000031



Note : les données ne sont pas garanties. Elles ont été entrées par les membres sans garantie d'exactitude.

