

HASH DE CARBALLESA

2009-04-12 (M) LOE 1874554
Couleur : Blanco y naranja (lemon)
[fiche affixe](#)



Père
URAL DE CUMBRAOS
(M)
1453631

RADENTIS D'ESPANA 1995-05-22
(M) LOE 990823 (Ch IT B, Ch GQ) -
lemon



RADENTIS SBRANCO 1991-07-01
(M) LOI ST448908 (CH IB, Ch. Int. Lav.) -
lemon



RADENTIS BORG
1987-04-30 (M) LOI
ST350267 (Ch. Int.
Lav., CH GQ, Ch. Ital.
Lav., Camp. Ripr.) -
lemon

lemon

RADENTIS OLA 1984-09-30 (F) LOI
ST298174 - lemon

RADENTIS BORG
1987-04-30 (M) LOI
ST350267 (Ch. Int.
Lav., CH GQ, Ch. Ital.
Lav., Camp. Ripr.) -
lemon

lemon

RADENTIS RAISSA 1991-05-30 (F)
LOI ST448920 - lemon

JEF 1998-01-21 (M) LOI LO98129733
(Ch. Ital. Lav., Ch. Int. Lav.) - tricolore



MARTIN DEL SASSOVIVO
1991-03-23 (M) LOI ST437996
(Ch. Ital. Lav., Ch. Int. Lav.) - lemon



DEBBY 1992-04-16 (F) LOI ST461956
- tricolore

DIRIA 2000-10-06 (F) LOE 1424787 -
tricolore

DIRIA DELLA BASSANA 1992-03-05
(F) LOI ST463477 (Ch. Ital. Lav., Ch. Int.
Lav.) - tricolore










MARK DELLA BASSANA
1985-05-20 (M) LOI
ST317648 (Camp.
Assoluto, Ch. Ital. Lav.,
Camp. Ripr.) - tricolore



RAQUEL DELLA BASSANA
1985-06-23 (F) LOI ST317605 -
BIANCO NERA

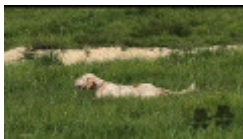


<p>Mère <u>TARA DE CUMBRAOS</u> (F) LOE 1453635</p>	<p><u>RADENTIS D'ESPANA</u> 1995-05-22 (M) LOE 990823 (Ch IT B, Ch GQ) - lemon</p> 	<p><u>RADENTIS SBRANCO</u> 1991-07-01 (M) LOI ST448908 (CH IB, Ch. Int. Lav.) - lemon</p> 	<p><u>RADENTIS BORG</u> 1987-04-30 (M) LOI ST350267 (Ch. Int. Lav., CH GQ, Ch. Ital. Lav., Camp. Ripr.) - lemon</p> 	
		<p><u>RADENTIS ALA</u> 1994-03-15 (F) LOI ST496649 (Ch T) - lemon</p>	<p><u>RADENTIS OLA</u> 1984-09-30 (F) LOI ST298174 - lemon</p>	<p><u>RADENTIS BORG</u> 1987-04-30 (M) LOI ST350267 (Ch. Int. Lav., CH GQ, Ch. Ital. Lav., Camp. Ripr.) - lemon</p> 
	<p><u>FRANCINI'S GALIZIA</u> 1999-06-06 (F) LOE 1161108 - bluebelton</p>	<p><u>FRANCINI'S ROCKY</u> 1989-02-25 (M) LOI ST409893 (Ch. Int. Lav., Ch. Ital. Lav.) - bluebelton</p> 	<p><u>FRANCINI'S ASTON</u> 1986-01-19 (M) LOI ST325293 (Camp. Ripr., Ch. Int. Lav., Ch. Ital. Lav.) - bluebelton</p> 	<p><u>FRANCINI'S RAISSA</u> 1991-05-30 (F) LOI ST448920 - lemon</p>
		<p><u>FRANCINI'S VIENNA</u> 1994-05-24 (F) LOI ST507422 - bluebelton</p>	<p><u>FRANCINI'S ODETTE</u> 1984-10-26 (F) LOI ST301903 (Camp. Ripr.) - bluebelton</p>	<p><u>FRANCINI'S LUCA</u> 1989-07-08 (M) LOI ST404483 (Ch. Ital. Lav., CH GQ, Ch. Int. Lav., Camp. Ripr.) - tricolore</p> 
			<p><u>FRANCINI'S SALLY</u> 1986-01-19 (F) LOI ST325298 (Camp. Ripr.) - bluebelton</p>	

Sang italien (estimation) : 100 %
Estimation des points au pédigrée : 26

Taux de consanguinité (estimation) : 15.2 %

RADENTIS D'ESPANA (2 X 2) : 0.149536
DUN DEL MESCHIO (7,7,8,8,8,8 X 6,7,7,8,8,8,8) : 0.000977
LINDO 3 DI CEREIA (7,8,8,8,8,8 X 8,8) : 0.000305
MAGIS GIM (7 X 6) : 0.000244
ZINGARA (8,8,8,8 X 7) : 0.000183
TRUEBA DELLA FAGIANA (8,8 X 8,8,8,8,8) : 0.000183
CRISMANI CARY (8,8 X 8,8) : 0.000122
ARNO II DI VAL D'IDICE (8 X 8,8,8) : 0.000061
VIMON REVEL (8 X 8,8) : 0.000031



Note : les données ne sont pas garanties. Elles ont été entrées par les membres sans garantie d'exactitude.

