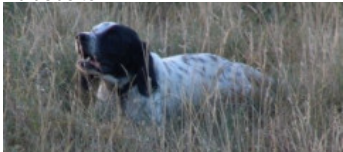









**DERO**

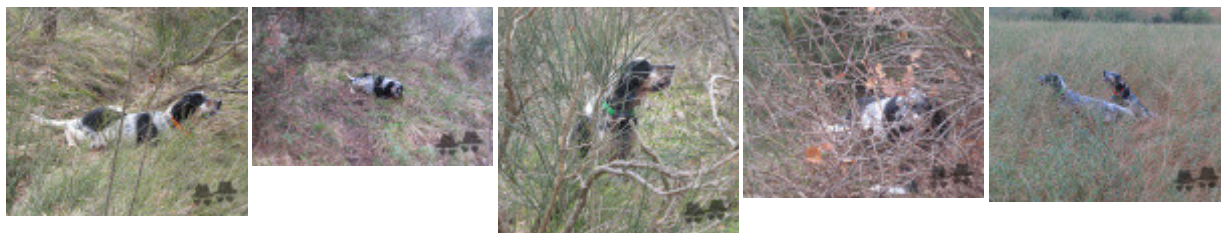
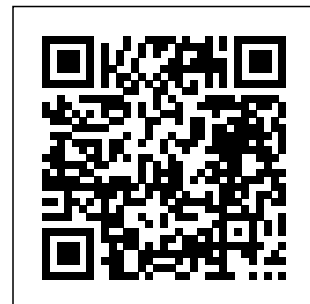
2007-05-22 (M) LOI LO0811425  
Couleur : bianco nero marrone (tricolore)



Père <b>NERO</b> 2000-07-11 (M) LOI LO0137605 - bluebelton	<b>ATHOS</b> 1997-04-30 (M) LOI LO985162 - lemon	<b>ARTU'</b> 1993-07-13 (M) LOI ST490846 - lemon	 <b>BROOM DELLA SERPENTARA</b> 1988-09-29 (M) LOI ST385420 (Ch. Int. Lav., Ch. Ital. Lav.) - lemon	
		<b>CECILIA</b> 1989-05-25 (F) LOI ST404692 - lemon	<b>CECILIA</b> 1989-05-25 (F) LOI ST404692 - lemon	
	<b>LUNA</b> 1994-09-06 (F) LOI ST510631 - bluebelton	<b>PEPE DEL BRANCASTELLO</b> 1989-09-28 (M) LOI ST422674 - bluebelton 	<b>ARTU'</b> 1983-05-28 (M) LOI ST270914 - lemon	<b>ROMA</b> 1983-05-28 (F) LOI ST270917 - lemon
			<b>LIMUS DEGLI UBERTI</b> 1982-07-25 (M) LOI ST249298 (Ch. Reproducteur) - bluebelton	<b>ONDA DEL BRANCASTELLO</b> 1983-05-08 (F) LOI ST270620 - bluebelton
		<b>AURA</b> 1987-08-05 (F) LOI ST352704 - tricolore	 <b>RAGANO</b> 1981-03-18 (M) LOI ST227450 (Ch. Ital. Lav.) - tricolore	
			<b>FISHA DEI DUE RAMI</b> 1983-05-01 (F) LOI ST263620 - tricolore	

<p>Mère <b>DIANA</b> 2002-05-22 (F) LOI LO02121299 - bluebelton</p> 	<p><b>DIK detto CIRO</b> 1999-04-02 (M) LOI LO99192220 - tricolore</p> 	<p><b>NILO</b> 1993-03-31 (M) LOI ST492384 - bluebelton</p> 	<p><b>RADENTIS GIAN</b> 1983-01-02 (M) LOI ST258470 (Ch. Ital. Lav., Ch. Int. Lav., Camp. Ripr.) - lemon</p> 
	<p><b>MAR dite DORA</b> 1997-03-23 (F) LOI ST560707 - liver</p> 	<p><b>ORTENSIA DI CARIGLIALTO</b> 1994-08-26 (F) LOI ST509897 - bluebelton</p>	<p><b>ALI DI CARIGLIALTO</b> 1991-08-05 (M) LOI ST448070 (Ch. Ital. Lav.) - bluebelton</p>
		<p><b>FALOÒ</b> 1991-05-24 (M) LOI ST439587 (Ch. Ital. Lav., Camp. Ripr.) - lemon</p> 	<p><b>RADENTIS GIAN</b> 1983-01-02 (M) LOI ST258470 (Ch. Ital. Lav., Ch. Int. Lav., Camp. Ripr.) - lemon</p> 
		<p><b>CHIRA</b> 1991-07-22 (F) LOI ST453090 - bluebelton</p>	<p><b>MIA</b> 1984-04-01 (F) LOI ST284436 - lemon</p>
			<p><b>ROYAL MOZART</b> 1987-03-04 (M) LOI ST350880 (CH GQ, Ch. Int. Lav., Ch. Ital. Lav., Camp. Ripr.) - bluebelton</p> 
			<p><b>LEDA</b> 1990-02-06 (F) LOI ST413992 - tricolore</p>

[ [Lien...](#) ] / Eleveur : Tittarelli Gabriele / Propriétaire : Tittarelli Gianni (347 0609231, gabrielettittarelli@omnipack.it)  
Puce : 968000004750566  
Estimation des points au pédigrée : 2



Note : les données ne sont pas garanties. Elles ont été entrées par les membres sans garantie d'exactitude.