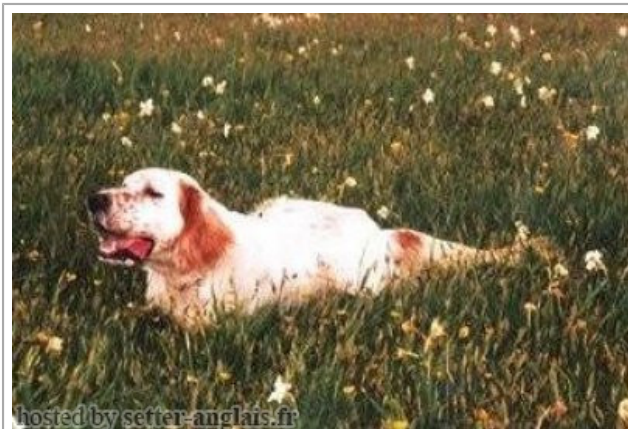









**RADENTIS COBRA**

2000-06-30 (M) LOI LO0128791

Couleur : BIANCO ARANCIO (lemon) / Titres : Camp. Tr. (Ch GQ) / Dyspl. : A  
[fiche affixe](#)

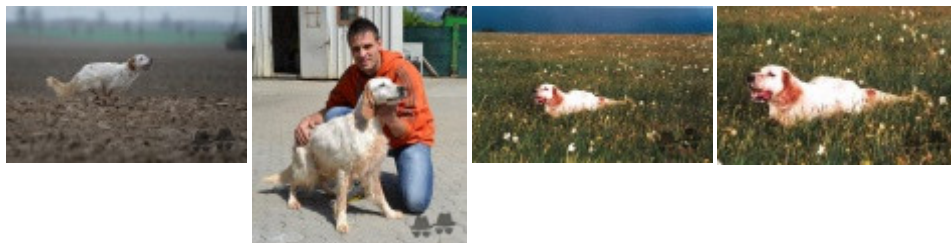
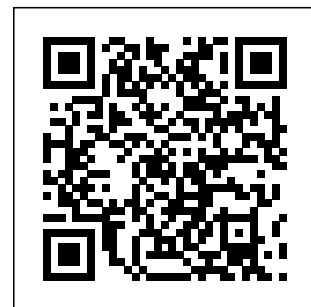
hosted by setter-anglais.fr

<p>Père</p> <p><b>LERRY</b></p> <p>1997-02-14 (M)</p> <p>LOI ST555862</p> <p>(Ch GQ, Ch IT)</p> <p>- bluebelton</p> 	<p><b>ARNO</b> 1988-04-17 (M) LOI ST374735</p> <p>(Ch. Int. Lav., Camp. Ripr., Ch. Ital. Lav.) - lemon</p> 	<p><b>CRISMANI ATOS</b> 1980-02-01 (M) LOI ST208763 (Ch IT) - liver</p> 	<p><b>CRISMANI MORGAN</b> 1976-10-19 (M)</p> <p>LOI ST111852 - liver</p>
	<p><b>PICENUM UNGA</b> 1990-10-02 (F) LOI ST430406 (CH GQ) - liver</p> 	<p><b>SWING DELLA VECCHIA IRLANDA</b></p> <p>1984-08-01 (F) LOI ST295020 (Ch L) - lemon</p>	<p><b>CRISMANI OLGA</b> 1978-08-10 (F) LOI ST139854 - bluebelton</p>
<p>Mère</p> <p><b>RADENTIS BELLA</b></p> <p>1997-01-13 (F)</p> <p>LOI ST559827</p> <p>(IT Ch GQ)</p> <p>- lemon</p> 	<p><b>RADENTIS SBRANCO</b> 1991-07-01 (M) LOI ST448908 (CH IB, Ch. Int. Lav.) - lemon</p> 	<p><b>BIBO</b> 1987-04-08 (M) LOI ST356972</p> <p>(Ch. Int. Lav., Ch. Ital. Lav., CH GQ) - bluebelton</p> 	<p><b>EMO DELLA TRAPPOLA</b></p> <p>1978-05-04 (M) LOI ST133042 (Ch L - Ch Int) - bluebelton</p>
	<p><b>QDF DEL SOLE</b> 1993-09-10 (F) LOI ST490145 - liver</p>	<p><b>STAR</b> 1987-01-16 (F) LOI ST346344 - bluebelton</p>	<p><b>FLAY DEL DIANELLA</b> 1983-06-25 (F) LOI ST266770 - bluebelton</p>
<p><b>RADENTIS BORG</b> 1987-04-30 (M)</p> <p>LOI ST350267 (Ch. Int. Lav., CH GQ, Ch. Ital. Lav., Camp. Ripr.) - lemon</p> 	<p><b>RADENTIS OLA</b> 1984-09-30 (F) LOI ST298174 - lemon</p>	<p><b>RADENTIS GIAN</b></p> <p>1983-01-02 (M) LOI ST258470 (Ch. Ital. Lav., Ch. Int. Lav., Camp. Ripr.) - lemon</p>	<p><b>DOLLY DELLA VECCHIA IRLANDA</b></p> <p>1980-02-16 (F) LOI ST213976 - bluebelton</p>
	<p><b>AMBO DEL VARO</b> 1987-10-04 (M)</p> <p>LOI ST360725 (Ch. Int. Lav.) - lemon</p> 	<p><b>RADENTIS DIDO</b></p> <p>1981-04-01 (M) LOI ST228056 - bluebelton</p>	<p><b>ROVAL EDI</b> 1981-10-11 (F) LOI ST239196 - bluebelton</p>
<p><b>UANA DEL SOLE</b> 1987-01-05 (F) LOI ST342352 - liver</p>	<p><b>ROVAL VIENNA</b> 1986-03-30 (F) LOI ST324982 - lemon</p>	<p><b>ATOS DELLE TORRICELLE</b></p> <p>1981-01-20 (M) LOI ST229212 (Ch IT T) - bluebelton</p>	<p><b>EDI</b> 1984-04-21 (F) LOI ST287293 - tricolore</p>

Propriétaire : Ambrogio Cereda  
 LO01/128791  
 LOF=5019560  
 ED=indemne  
 Tatouage : 0RFO22  
 Estimation des points au pédigrée : 70

## Taux de consanguinité (estimation) : 2.2 %

DUN DEL MESCHIO (6,6,7,7 X 5,6,6,6,7,7,7,7) : 0.010498  
DECOR LOT (5 X 5,5,5,5) : 0.007812  
BRILL 2 DEL ROVERE (7,8,8,8,8,8 X 7,8,8,8,8) : 0.000916  
CRISMANI OLAF (7,7,8,8 X 6,7,7,7,7,8,8,8,8,8) : 0.000549  
BRICK DEL ROVERE (6,8,8 X 8,8) : 0.000366  
VAVA DEL TIDONE (5,8 X 8) : 0.000275  
VIMON REVEL (8,8 X 7,8,8,8,8,8) : 0.000275  
ARTU (7 X 7,8) : 0.000183  
ALMAR DARMA (8,8,8 X 7,8,8,8) : 0.000153  
TRUEBA DELLA FAGIANA (8,8 X 7,7,8,8,8) : 0.000122  
ARNO II DI VAL D'IDICE (7,8,8 X 8) : 0.000122  
RAYMOND'S PRINCE (7,8,8 X 8) : 0.000122  
ZAR 11 (8 X 8,8) : 0.000061  
DAMA 17 (8 X 7,8,8,8,8) : 0.000061  
DICH DI VAL D'IDICE (8 X 7,8,8,8,8) : 0.000061  
MISS 3 DELLE VALLATE (8 X 7,8) : 0.000061  
CRISMANI BLACK (8,8 X 8) : 0.000061  
SARA 6 (8 X 8,8) : 0.000061  
ROSY (8 X 8) : 0.000031  
CLAVARENSIS BETTY (8 X 8) : 0.000031  
CRISMANI BILL (8,8 X 8) : 0.000031



Note : les données ne sont pas garanties. Elles ont été entrées par les membres sans garantie d'exactitude.