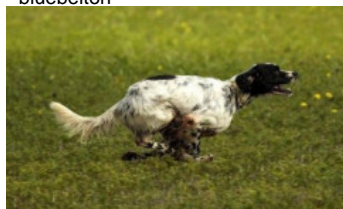


LEIOANDI MOZART

2017-07-01 (M) LOE 2381079
Couleur : Blanco y naranja (lemon)
[fiche affixe](#)



Père
LEIOANDI CIRO
2009-07-01 (M)
LOE 1896997
(CH GQ)
- bluebelton



DENDABERRI JAI 2007-03-12 (M)
LOE 1704343 (TrCP, TrPR, TrBC) -
bluebelton



TALI 2002-01-13 (F) LOI LO0275459 -
tricolore



PALAZIENSIS RAMBO 1999-11-01
(M) LOI LO0060896 (Ch W0F/CH, IT T,
ITF, Camp. Tr. (Ch GQ), CH(ES)T, CH(GB)T) -
lemon



UMBLANA DEL CAVALDROSSA
2000-06-01 (F) LOI LO0336882 -
bluebelton

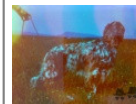


NERO 1997-03-29 (M) LOI
LO9817889 (Ch T, Ch GQ) - bluebelton



SHIFFER 1996-07-13 (F) LOI
ST547867 - bluebelton

PALAZIENSIS PEPE
1997-07-03 (M) LOI
LO99203608 - liver



LADY 1994-04-30 (F) LOI ST499069
(Ch A) - bluebelton



ZERO 1991-08-14 (M) LOI
ST449780 - bluebelton

QUARTA DEL CAVALDROSSA (F)
SHSB529576



GUFO DI VAL DI CHIANA
1994-04-01 (M) LOI
ST514177 (Ch GQ) -
bluebelton












KELLI 1992-06-18 (F)
LOI ST466220 -
bluebelton



**FRANCINI'S
ROCKY**
1989-02-25
(M) LOI
ST409893 (Ch.
Int. Lav., Ch. Ital. Lav.) - bluebelton

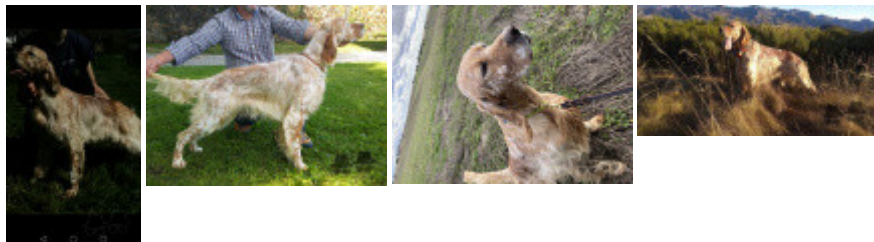
FRANCINI'S BRIGITTE 1994-03-01
(F) LOI ST501610 - tricolore

<p>Mère LEIOANDI FIONA (F) LOE 2273059 - lemon</p>	<p>GIONO DU VAL DU RUTH 2011-11-02 (M) LOF 219358/37442 (CH IT, CH GQ, CH CS, CH EN, CH ESP GQ, CH(ES)T) - lemon</p> 	<p>CHAM DU VAL DU RUTH 2007-01-09 (M) LOF 189877/31382 (CHGQ -CHITF -ChFV -VOF/FTP -TRGQ) - lemon</p> 	<p>KAPO' 2003-11-10 (M) LOI LO0439835 (Ch IT GQ) - bluebelton</p> 	
	<p>MARZALE'S GERARDINA 2011-05-15 (F) LOI LO11106592 - liver</p>	<p>USKA DU MAS D'EYRAUD 2003-09-23 (F) LOF 173156/33007 - lemon</p> 	<p>ROSENN DU MAS D'EYRAUD 2000-05-29 (F) LOF 154091/28767 (Ch GQ) - lemon</p> 	<p>PIVIDORI'S GIOTTO 1997-06-12 (M) LOI LO0114200 (Camp. Tr. (Ch GQ), CH IT) - bluebelton</p> 
		<p>KAPO' 2003-11-10 (M) LOI LO0439835 (Ch IT GQ) - bluebelton</p> 	<p>NERO 1997-03-29 (M) LOI LO9817889 (Ch T, Ch GQ) - bluebelton</p> 	<p>NANDY DU MAS D'EYRAUD 1997-04-12 (F) LOF 136974/28403 (VOF/FTP, VOF/FTA) - lemon</p>
		<p>GLORIA 2009-08-12 (F) LOI LO1039522 - liver</p>	<p>KYBA 1998-01-01 (F) LOI LO98118951 - lemon</p>	<p>POLITIUM BRUNO 2004-05-02 (M) LOI LO0480581 - liver</p> 
			<p>POLITIUM ESTASY 2007-02-05 (F) LOI LO0773182 - lemon</p>	

Eleveur : Leioandi / Propriétaire : Team Montoiro (adestramentocans@gmail.com)
Puce : 985113001205116
Sang italien (estimation) : 96 %
Estimation des points au pédigrée : 31

Taux de consanguinité (estimation) : 4 %

NERO (3 X 4,5,6) : 0.027451
NEGUS (5,5 X 6,6,7,7,8,8,8) : 0.005615
FRANCINI'S LUCA (5 X 6) : 0.000977
LEM DEL RESEGONE (7,8,8,8,8,8 X 7,8,8,8) : 0.000977
DECOR LOT (6,8,8 X 7,7,8,8) : 0.000671
DEM (6 X 7,7,7,8) : 0.000610
OLAF DEI TRE PONTI (6,7 X 7,8) : 0.000549
GAETANO DEL BINARIO (5 X 7) : 0.000488
LEM DEL DIANELLA (6,6 X 7,7,8,8,8,8) : 0.000488
RALF DEL DIANELLA (7 X 6,7,8,8) : 0.000427
ROVAL MOZART (7,8 X 6) : 0.000366
DUN DEL MESCHIQ (7,8,8,8,8 X 8,8,8) : 0.000366
EGON BUZAHZI (6 X 7) : 0.000244
MERA DELL ORSONE (7,8 X 7,8) : 0.000183
ALA (6 X 7,8,8) : 0.000122
FRANCINI'S ASTON 1 (6 X 7,8,8) : 0.000122
FRANCINI'S PEGGY (7,8,8 X 8) : 0.000061
LEDA (7 X 8,8,8,8) : 0.000061
EMO DELLA TRAPPOLA (7 X 8,8) : 0.000061
FRANCINI'S VANITY (7,7 X 8) : 0.000061
CALIGOLA DELLE OROBICHE (6,8 X 8) : 0.000031
ORFEO DELLA TRAPPOLA (7,8 X 8) : 0.000031



Note : les données ne sont pas garanties. Elles ont été entrées par les membres sans garantie d'exactitude.