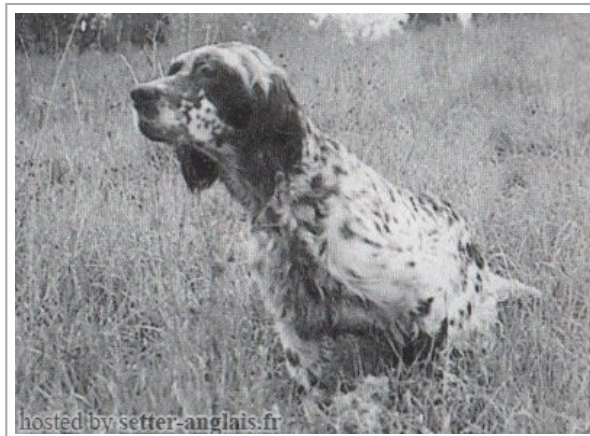
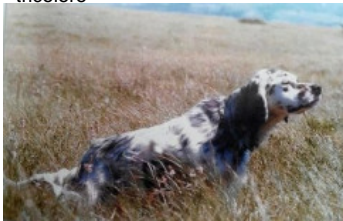









**FRANCINI'S GUYA**

1992-03-26 (F) LOI ST461191

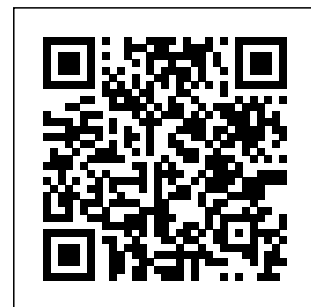
Couleur : BIANCO NERO (bluebelton) / Titres : Ch. Ital. Lav., Ch. Int. Lav., Camp. Ripr.  
[fiche affixe](#)

<p>Père</p> <p><b>FRANCINI'S LUCA</b> 1989-07-08 (M) LOI ST404483 (Ch. Ital. Lav., CH GQ, Ch. Int. Lav., Camp. Ripr.) - tricolore</p> 	<p><b>DEM</b> 1980-08-30 (M) LOI ST222808 (CH INT L RIP) - BIANCO-MACCHIA NERA OCCHIO DX-PI</p> 	<p><b>DUN DEL MESCHIO</b> 1972-04-08 (M) LOI ST046247 (Ch GQ - Ch reproducteur) - bluebelton</p> 	<p><b>CRISMANI OLAF</b> 1962-05-10 (M) LOI ST19595 (CH L, CH INT) - bluebelton</p>	
	<p><b>FRANCINI'S LORI</b> 1980-07-21 (F) LOI ST219787 - BIANCO NERA PUNTEGGIATA</p>	<p><b>LEDA</b> 1976-04-13 (F) LOF 50709/05251 - tricolore</p>	<p><b>MAGIS GIM</b> 1973-07-20 (M) LOI ST063170 (Ch L Ch INT) - n.d.</p> 	<p><b>ALMAR LEDA</b> 1967-06-22 (F) LOI ST5851</p>
<p>Mère</p> <p><b>FRANCINI'S ODETTTE</b> 1984-10-26 (F) LOI ST301903 (Camp. Ripr.) - bluebelton</p>	<p><b>OLAF DEI TRE PONTI</b> 1981-10-12 (M) LOI ST234864 (CH L CHINT) - bluebelton</p> 	<p><b>FRANCINI'S VANITY</b> 1976-08-01 (F) LOI ST104417 - bluebelton</p>	<p><b>BANG DI MONTEDURO</b> 1970-01-06 (M) LOI ST026590 (CH L CHINT)</p>	
	<p><b>MAW</b> 1974-03-27 (M) LOI ST073982 (CHIT INTCH) - n.d.</p> 	<p><b>FRANCINI'S PEGGY</b> 1972-04-11 (F) LOI ST049588 (Ch Italie L, Ch IT B) - NA</p> 	<p><b>LEM DEL RESEGONE</b> 1972-01-02 (M) LOI ST054069 (Camp. Ripr.) - bluebelton</p>	<p><b>NADA</b> 1971-03-17 (F) LOI ST037430</p>
	<p><b>DIANA</b> 1978-12-22 (F) LOI ST144364 - lemon</p>	<p><b>ROSETTE</b> 1981-04-01 (F) LOI ST229946 - lemon</p>	<p><b>FRIDA</b> 1975-05-16 (F) LOI ST084282</p>	<p><b>BRIO DI SPAZZAVENTO</b> 1968-03-01 (M) LOI ST010130 (CH L CHINT)</p>
	<p><b>NILO</b> 1975-07-15 (M) LOI ST093257</p>	<p><b>BRENDA</b> 1972-08-12 (F) LOI ST054298</p>	<p><b>MIRKO 19 DEL CREMASCO</b> (M) LOI ST16597</p> 	<p><b>ZINGARA</b> 1971-02-11 (F) LOI ST034768</p>
		<p><b>SILVA</b> 1971-06-14 (F) LOI ST041396</p>	<p><b>CASCIANENSIS BRIK</b> 1970-04-20 (M) LOI ST026211</p>	
		<p><b>MARY</b> 1968-03-07 (F) LOI ST010524</p>		

Eleveur : FRANCINI FRANCO / Propriétaire : Romanello Carlo  
 Tatouage : 2FF25  
 Estimation des points au pédigrée : 50

## Taux de consanguinité (estimation) : 1.7 %

ARTU (5 X 4) : 0.003906  
MISS 3 DELLE VALLATE (6 X 4,5) : 0.001953  
SONIA DEL ROVERE (7,7,8,8,8,8 X 6,7,8,8) : 0.001648  
GONZAGHENSIS MUR (7,7,8,8 X 6,7,7,8,8) : 0.001648  
BRILL 2 DEL ROVERE (5,8 X 6,7) : 0.001556  
TELL 68 (7,7,8,8,8 X 7,7,8,8,8) : 0.001190  
TURBINE (7,8,8,8 X 6,7,8,8) : 0.001007  
NILO DI BELLOSGUARDO (7 X 5,6) : 0.000732  
ORSONE DELL'ORSONE (6 X 6) : 0.000488  
TICINENSIS CAVALIER D'ARPINO (7,8,8,8 X 7,7) : 0.000366  
RAF2 (7,7,8,8,8 X 8,8) : 0.000366  
CRISMANI BLACK (6,8,8 X 8,8) : 0.000366  
QUES DELLE MORENE (7,7 X 7,8) : 0.000305  
VIVO DI BELLOSGUARDO (7 X 6) : 0.000244  
SHARBERRY FERN (7,8,8 X 7) : 0.000183  
DIANA DELLA VILLA (7,8 X 7) : 0.000183  
CRISMANI SLY (6 X 8) : 0.000122  
FELIX DI SAN MARZANO (7 X 5,6,7) : 0.000122  
LEO DELLA ZARA (8,8 X 8,8,8) : 0.000122  
ALA 28° (8,8 X 8,8,8) : 0.000122  
KIM 6 (8,8 X 7,8) : 0.000092  
MISS22 (8,8 X 7,8) : 0.000092  
MINO DI BELLOSGUARDO (7 X 8) : 0.000061  
GAIA 2 (7 X 8) : 0.000061  
CRISMANI BUCK (8,8 X 8) : 0.000061  
TICINENSIS HAPPY (8 X 8) : 0.000031



Note : les données ne sont pas garanties. Elles ont été entrées par les membres sans garantie d'exactitude.