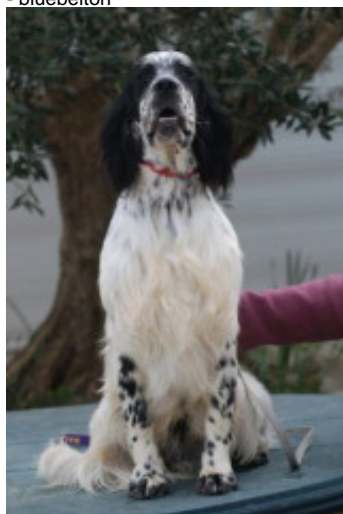


**NELSON DU FIEF DE LA GARENNE**

2017-06-20 (M) LOF 250787/42790

Color: Noi. PBl.Env.Mou. (bluebelton) / Qualifications: TR ChFJ, CH(FR)J / Dyspl.: C  
Kennel

Father  
**VOLO DEI LADERCHI**  
2015-05-25 (M)  
LOF 244115/40780  
(TAN, TR, CH(MONTENEGRO)B, CH IB)  
- bluebelton



**DECO DELLADERCHI** 2008-07-03  
(M) LOI LO0967547 - bluebelton



**ZARA DELLA BASSA REGGIANA**  
2010-04-05 (F) LOI LO11112521 -  
tricolore

**IU' DELLADERCHI** 2004-10-02 (M)  
LOI LO0541547 - lemon



**LIÙ DELLADERCHI** 2004-10-06 (F)  
LOI LO0541551 - bluebelton



**VOLO DELLA BASSA REGGIANA**  
2000-05-12 (M) LOI LO00122428 (Ch.  
Ital. Lav., Ch. Int. Lav.) - tricolore



**VANDA DELLA BASSA REGGIANA**  
2000-05-12 (F) LOI LO00122438 -  
bluebelton

**RADENTIS NOMAR**  
1998-03-22 (M) LOI  
LO98133353 ((CHGQ CHITF /  
CHIT.B)) - liver



**ASIA DEI LADERCHI**  
1996-03-23 (F) LOI  
ST554774 - bluebelton



**BECKER OD BENCICA**  
1997-04-03 (M)  
HR11621 (Ch) - tricolore



**ONDA DEI LADERCHI**  
1998-12-04 (F) LOI  
LO99110409 (CH IB) -  
bluebelton









**DEN OD BENCICA** (M) HR10244 (Ch  
HR)

**ONDA DELLA BASSA REGGIANA**  
1996-07-04 (F) LOI ST548955 -  
bluebelton

**DEN OD BENCICA** (M) HR10244 (Ch  
HR)

**ONDA DELLA BASSA REGGIANA**  
1996-07-04 (F) LOI ST548955 -  
bluebelton

<p>Father <b>HERMINE DELLA CRUISMANY</b> 2012-01-01 (M) LOF 220235/43739 (CH IB, CH CS) - bluebelton</p>	<p><b>BOSTON DELLA CRUISMANY</b> 2006-07-31 (M) LOF 189333/31257 - bluebelton</p> 	<p><b>U'TONY DELLA BASSANA dit TONY</b> 2003-06-09 (M) LOF 179293/28507 (Ch IB) - bluebelton</p> 	<p><b>BOSS DELLA BASSANA</b> 1998-07-07 (M) LOI LO9937795 (CH ITAL BOB) - bluebelton</p> 
	<p><b>NORA</b> 2007-07-09 (F) LOF 201223/37980 - lemon</p> 	<p><b>OPALINE LE FOYER DU SETTER</b> 1998-06-11 (F) LOF 147883/26340 - tricolore</p>	<p><b>GEM DELLA BASSANA</b> 2000-02-22 (F) LOI LO0158644 (CH IB, Camp. Ripr.) - tricolore</p>
		<p><b>MET</b> 2003-01-15 (M) LOI LO0345160 (CH GQ) - bluebelton</p> 	<p><b>OAKLEY'S BULLETPROOF</b> 1993-04-18 (M) SHSB533692 (Champion USA)</p> 
		<p><b>GINA DELLA BASSANA</b> 2003-08-31 (F) LOI LO0425723 - lemon</p>	<p><b>INGA LE FOYER DU SETTER</b> 1993-05-21 (F) 504623 - tricolore</p>
			<p><b>PALAZIENSIS RAMBO</b> 1999-11-01 (M) LOI LO0060896 (Ch WOF/CH, IT T, ITF, Camp. Tr. (Ch GQ), CH(ES)T, CH(GB)T) - lemon</p> 
			<p><b>UMBLANA DEL CAVALDROSSA</b> 2000-06-01 (F) LOI LO0336882 - bluebelton</p> 
			<p><b>BOSS DELLA BASSANA</b> 1998-07-07 (M) LOI LO9937795 (CH ITAL BOB) - bluebelton</p> 
			<p><b>DIRA DELLA BASSANA</b> 1995-08-28 (F) LOI ST525652 (CH(I)B) - lemon</p>

Breeder: MULERO DANIEL / Owner: TATIANA BERTRAND

ADN=compatible.

Cotation (FR): 2

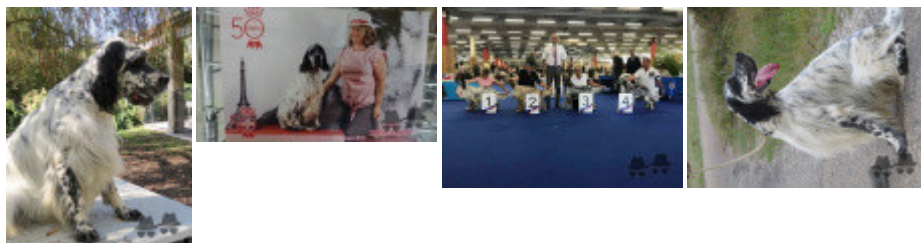
Chip : 250268501270731

DNA deposit

Italian breeding (estimated): 92%

Points in pedigree: 39

## Estimated coefficient of inbreeding: 2.8 %

**MARK DELLA BASSANA** (6,6,6,7,7 X 5,6,6,7,7,7) : 0.012085**LOPEZ DELLA BASSANA** (7,7,7,7,8,8,8,8,8,8,8,8,8 X 7,7,7,7,8,8,8,8,8,8,8,8,8,8) : 0.010925**CIBA DELLA BASSANA** (7,7,7,8,8 X 6,7,7,7,8,8,8,8) : 0.001221**ITRI DELLA BASSANA** (7,7,7,8,8 X 6,7,7,7,8,8,8,8) : 0.000977**BORA DEL LADERCHI** (6,7,7 X 7,7) : 0.000977**GIP DELLA BASSANA** (6,6,7,7,8,8,8,8,8 X 8,8) : 0.000854**UP DI CEREIA** (8,8,8,8 X 7,8,8,8,8,8,8,8) : 0.000488**LAICA DI POMPIANO** (8,8,8,8 X 7,8,8,8,8) : 0.000366**CRISMANI DUMBO** (8,8,8,8 X 8,8) : 0.000244**PEO DELLA BASSANA** (8,8 X 8) : 0.000061**FARA** (8,8 X 8) : 0.000061**ROVAL MOZART** (8 X 8) : 0.000031

Note: data are entered by members. There is no guarantee about accuracy of data.