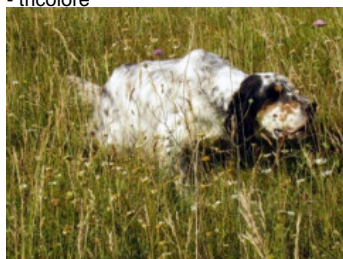


NENCINI'S KELT

2014-01-30 (M) LOI LO1450001
Couleur : BIANCO NERO (bluebelton)
[fiche affixe](#)



Père
NENCINI'S BOY
2005-04-10 (M)
LOI LO05132310
- tricolore



BIG JIM 2000-12-01 (M) LOI
LO0188207 (CH GQ, Ch. Int. Lav., Camp.
Ripr., Ch. Ital. Lav.) - liver



NENCINI'S SIRIA 1998-06-29 (F) LOI
LO9956592 - tricolore



LERRY 1997-02-14 (M) LOI
ST555862 (Ch GQ, Ch IT) - bluebelton



RADENTIS TANGA 1998-09-15 (F)
LOI LO9958147 - lemon

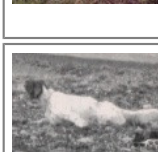


ZAR DEI LADERCHI 1993-01-10 (M)
LOI ST478983 - tricolore



FRANCINI'S NANA 1994-09-10 (F)
LOI ST510511 - bluebelton

ARNO 1988-04-17
(M) LOI ST374735
(Ch. Int. Lav., Camp.
Ripr., Ch. Ital. Lav.) -
lemon



PICENUM UNGA
1990-10-02 (F) LOI
ST430406 (CH GQ) -
liver

**RADENTIS
SBRANCO**
1991-07-01 (M) LOI
ST448908 (CH IB, Ch.
Int. Lav.) - lemon




BESSY 1995-02-10 (F) LOI ST515746
- lemon

**MARK DELLA
BASSANA**
1985-05-20 (M) LOI
ST317648 (Camp.
Assoluto, Ch. Ital. Lav.,
Camp. Ripr.) - tricolore

IRA DEI LADERCHI
1990-01-10 (F) LOI
ST411385 (CAC) -
tricolore

FRANCINI'S LUCA
1989-07-08 (M) LOI
ST404483 (Ch. Ital.
Lav., CH GQ, Ch. Int.
Lav., Camp. Ripr.) -
tricolore

FRANCINI'S ZEBRA 1988-07-03 (F)
LOI ST376829 - bluebelton

<p>Mère</p> <p>BALGI'S FLORA 2007-01-20 (F) LOI LO0760979 - bluebelton</p> 	<p>BALGI'S RED 2004-08-22 (M) LOI LO0543436 (Ch. Ital. Lav.) - bluebelton</p>	<p>INDIO 1995-08-30 (M) LOI ST532185 (Ch. Ital. Lav., Camp. Ripr.) - bluebelton</p>	<p>BILL 1990-05-05 (M) LOI ST421797 (Ch. Ital. Lav., Ch. Int. Lav., Camp. Ripr.) - bluebelton</p>
	<p>BALGI'S ILIA 2002-08-05 (F) LOI LO0212197 - bluebelton</p>	<p>ASSIA 2002-08-26 (F) LOI LO02160978 - bluebelton</p>	<p>DERO 1997-06-10 (M) LOI LO9834782 (Ch. Ital. Lav.) - bluebelton</p> 
		<p>ZICO 1997-11-02 (M) LOI LO9892305 - bluebelton</p>	<p>BILL 1990-05-05 (M) LOI ST421797 (Ch. Ital. Lav., Ch. Int. Lav., Camp. Ripr.) - bluebelton</p>
		<p>BURTAI 1998-03-17 (F) LOI LO98137149 - bluebelton</p>	<p>DENNY 1991-02-16 (F) LOI ST435851 - bluebelton</p>
			<p>PIANIGIANI'S SAIMON 1994-01-02 (M) LOI ST496239 (Ch. Ital. Lav., Camp. Ripr.) - bluebelton</p> 
			<p>CELESTE 1994-03-25 (F) LOI ST500015 - bluebelton</p>

Eleveur : NENCINI CLAUDIO / Propriétaire : BARLASSINA GIUSEPPE
 Puce : 380260080291336
 Estimation des points au pédigrée : 15

Taux de consanguinité (estimation) : 1.5 %

FRANCINI'S LUCA (4 X 5) : 0.003906
FRANCINI'S ASTON (5 X 5,6) : 0.003113
LEM DEL RESEGONE (7,7,8,8 X 6,6,7,7,8,8,8) : 0.002228
DUN DEL MESCHIO (6,7,8,8,8 X 7,7,8,8,8,8) : 0.001678
DEM (5 X 6,6) : 0.000977
FRANCINI'S VANITY (6,7 X 7,7,8,8) : 0.000610
RADENTIS GIAN (6 X 6) : 0.000488
MERA DELL ORSONE (7 X 6,6,7,8) : 0.000488
DECOR LOT (7,7,7,7 X 7) : 0.000366
FRANCINI'S RAS (6 X 6,7,7,8) : 0.000366
OLAF DEI TRE PONTI (6 X 7) : 0.000244
DIK DELLA MARCIOLA (7 X 7,7,8,8) : 0.000122
ARTU (8,8 X 8,8) : 0.000122
DERK (8 X 8,8,8) : 0.000092
CRISMANI CARY (8 X 8,8) : 0.000061
ARNO II DI VAL D'IDICE (8 X 8,8) : 0.000061
ORFEO DELLA TRAPPOLA (7 X 8) : 0.000061



Note : les données ne sont pas garanties. Elles ont été entrées par les membres sans garantie d'exactitude.

