

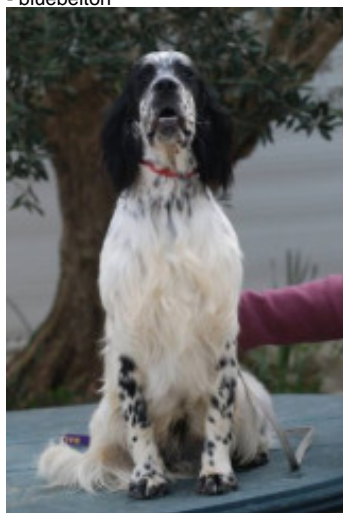
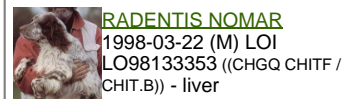
ORSON DU TERROIR DE SAINTONGE

2018-05-10 (M) LOF 255451
Couleur : Noï. PBI.Env.Mou. (bluebelton)
[fiche affixe](#)

Père

VOLO DELLADERCHI

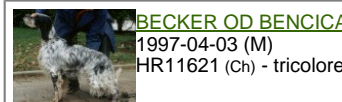
2015-05-25 (M)
LOF 244115/40780
(TAN, TR, CH(MONTENEGRO)B, CH IB)
- bluebelton

**DECO DEI LADERCHI** 2008-07-03
(M) LOI LO0967547 - bluebelton**IU' DEI LADERCHI** 2004-10-02 (M)
LOI LO0541547 - lemon

RADENTIS NOMAR
1998-03-22 (M) LOI
LO98133353 ((CHGQ CHITF /
CHIT.B)) - liver



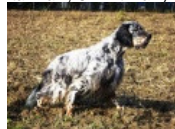
ASIA DEI LADERCHI
1996-03-23 (F) LOI
ST554774 - bluebelton



BECKER OD BENCICA
1997-04-03 (M)
HR11621 (Ch) - tricolore



ONDA DEI LADERCHI
1998-12-04 (F) LOI
LO99110409 (CH IB) -
bluebelton

ZARA DELLA BASSA REGGIANA
2010-04-05 (F) LOI LO11112521 -
tricolore**VOLO DELLA BASSA REGGIANA**
2000-05-12 (M) LOI LO00122428 (Ch.
Ital. Lav., Ch. Int. Lav.) - tricolore

DEN OD BENCICA (M) HR10244 (Ch
HR)

ONDA DELLA BASSA REGGIANA
1996-07-04 (F) LOI ST548955 -
bluebelton

VANDA DELLA BASSA REGGIANA
2000-05-12 (F) LOI LO00122438 -
bluebelton

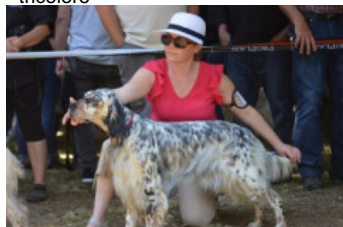
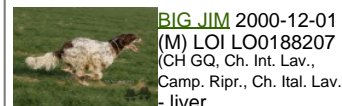
DEN OD BENCICA (M) HR10244 (Ch
HR)

ONDA DELLA BASSA REGGIANA
1996-07-04 (F) LOI ST548955 -
bluebelton

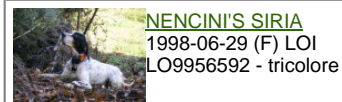
Mère

JAZZ DU FIEF DE LA GARENNE

2014-09-16 (F)
LOF 236576/47381
(CH CS, CH EN)
- tricolore

**EVEREST DEI LADERCHI**
2010-07-12 (M) LOF 215778/35310
(TR.CH CS,CH IB,CH IE) - tricolore**NENCINI'S BOY** 2005-04-10 (M) LOI
LO05132310 - tricolore

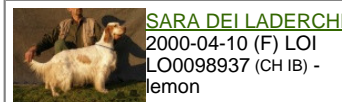
BIG JIM 2000-12-01
(M) LOI LO0188207
(CH GQ, Ch. Int. Lav.,
Camp. Ripr., Ch. Ital. Lav.)
- liver



NENCINI'S SIRIA
1998-06-29 (F) LOI
LO9956592 - tricolore

TUNDRA DEI LADERCHI 2006-03-08
(F) LOI LO06130268 - tricolore

LOTHAR DEI LADERCHI 2004-10-06
(M) LOI LO0541557
(CH IB) - tricolore



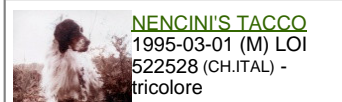
SARA DEI LADERCHI
2000-04-10 (F) LOI
LO0098937 (CH IB) -
lemon

FLORA DU FIEF DE LA GARENNE
2010-04-16 (F) LOF 209528/41730
(CH IE) - lemon**EDEN DU FIEF DE LA GARENNE**
2009-01-29 (M) LOF 201992/33692 -
lemon

SERONE 2001-09-11
(M) LOF
162848/27730 -
lemon



URFA DU BOIS D'YRIEUX 2003-06-12
(F) LOF 170649/32915 -
bluebelton

NENCINI'S SIMBA 2001-08-10 (F)
LOF 185207/34389 (Ch IB) - tricolore

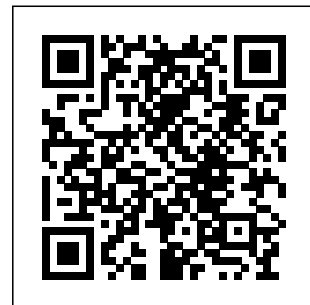
NENCINI'S TACCO
1995-03-01 (M) LOI
522528 (CH.ITAL) -
tricolore

NENCINI'S NALA 1997-08-30 (F) LOI
LO9897607 - lemon

Puce : 250269811561855
Sang italien (estimation) : 94 %
Estimation des points au pédigrée : 28

Taux de consanguinité (estimation) : 5.5 %

MARK DELLA BASSANA (6,6,6,7,7 X 6,6,6,7,7,7,8,8,8,8,8) : 0.007690
ZAR DELLADERCHI (5,5 X 5,6,6) : 0.007507
LOPEZ DELLA BASSANA (7,7,7,7,8,8,8,8,8,8,8,8,8,8 X 8,8,8,8,8,8,8,8,8,8,8,8,8) : 0.006836
KIP OD BENCICA (5,5,6,7,7,7,7 X 7,7,8,8,8,8,8) : 0.004395
BECKER OD BENCICA (4 X 5) : 0.004181
DEN OD BENCICA (4,4,5 X 6) : 0.004120
ONDA DELLADERCHI (4 X 5) : 0.003967
ASIA DELLADERCHI (4 X 5) : 0.003967
IRA DELLADERCHI (5,6,6 X 6,6,7,7) : 0.003113
DEA OD BENCICA (5,5 X 6,6) : 0.002197
RADENTIS SBRANCO (5 X 6) : 0.001038
GIP DELLA BASSANA (6,6,7,7,8,8,8,8,8,8 X 8,8,8,8) : 0.000977
ITRI DELLA BASSANA (7,7,7,8,8 X 7,7,7,7,8,8,8,8,8,8) : 0.000977
FENI OD BENCICA (6,6 X 6,7,7) : 0.000977
BORA DELLADERCHI (6,7,7 X 7,7,8,8,8,8,8) : 0.000732
CIBA DELLA BASSANA (7,7,7,8,8 X 7,7,7,7,8,8,8,8) : 0.000488
DECOR LOT (8,8,8,8,8,8 X 8,8) : 0.000366
RADENTIS BORG (6,6 X 7) : 0.000244
ZICO OD BENCICA (8,8 X 6,8) : 0.000244
FRANCINI'S LUCA (7 X 6) : 0.000244
LAICA DI POMPIANO (8,8,8,8,8 X 8,8,8,8) : 0.000244
RADENTIS GIAN (7,7 X 8,8) : 0.000122
RUDY DEL DIANELLA (7,7 X 8) : 0.000122
FRANCINI'S VANITY (8,8 X 8) : 0.000061
OLAF DELTRE PONTI (8,8 X 8) : 0.000061
ROVAL MOZART (8 X 7) : 0.000061



Note : les données ne sont pas garanties. Elles ont été entrées par les membres sans garantie d'exactitude.